



Southern Area Coordination Center

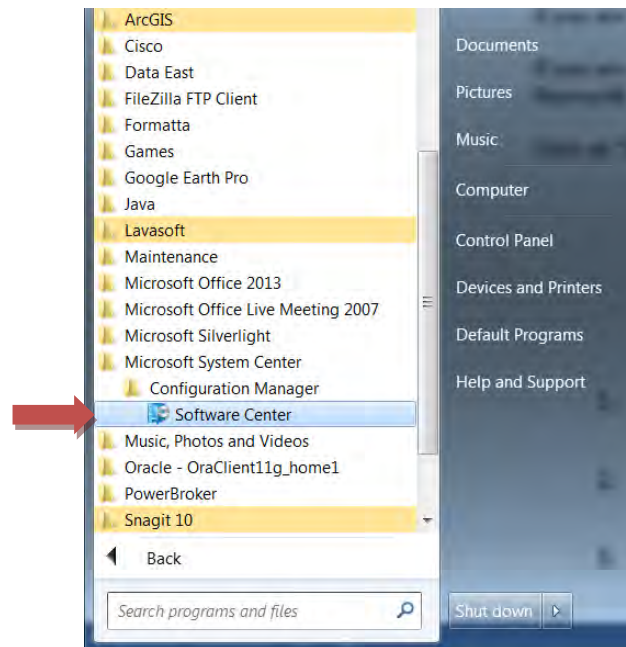
WinSCP for the New Secure nifc.ftp.gov

HELP DOCUMENTATION

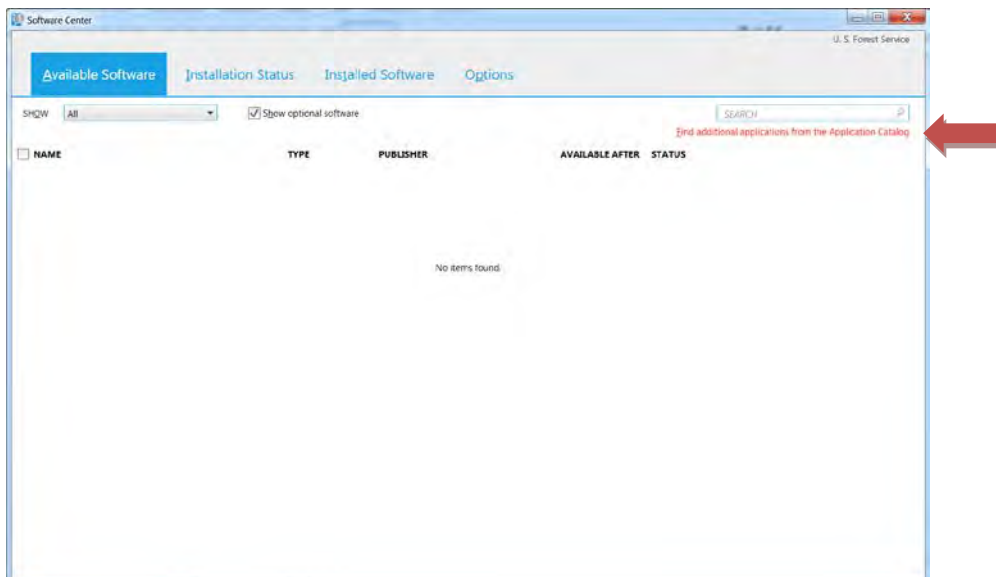
If you are NOT a Forest Service employee, you will download WinSCP at <https://winscp.net/eng/index.php>

If you are a Forest Service employee and you do not have WinSCP loaded on your computer, you will install using the Microsoft System Center following these instructions:

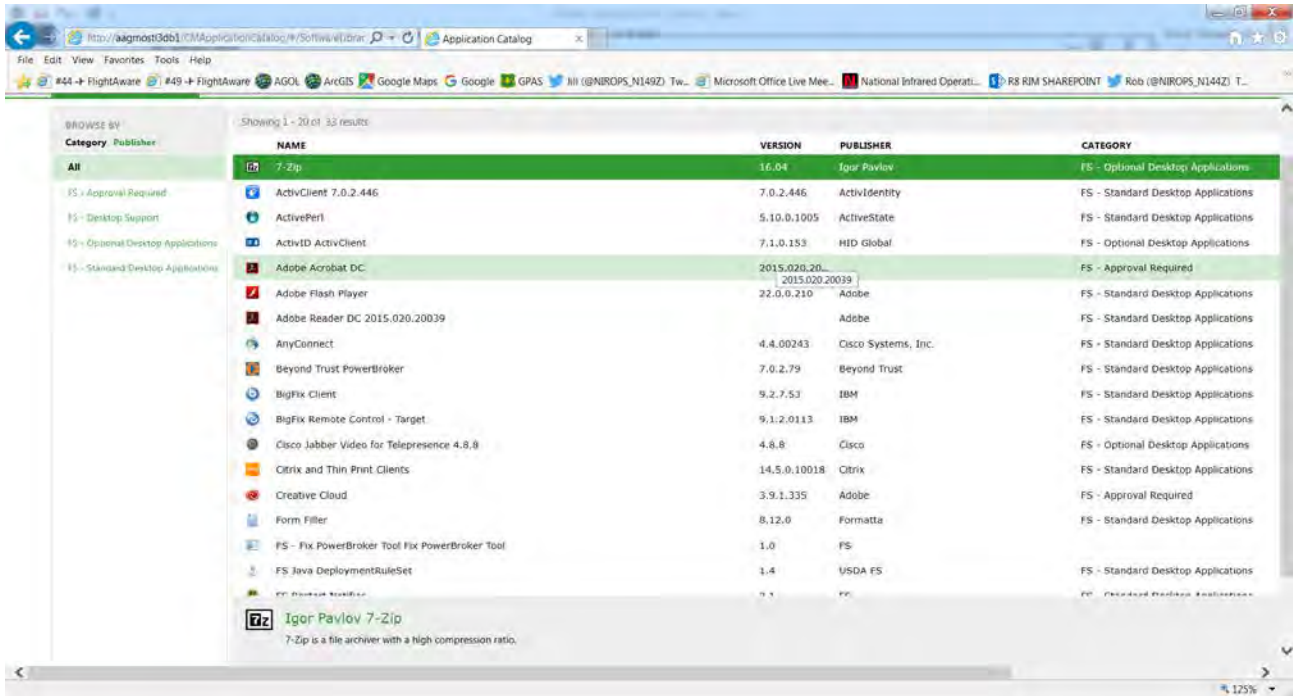
Click on “Start”, then “All Programs”, then “Microsoft System Center”, then “Configuration Manager”, then “Software Center”



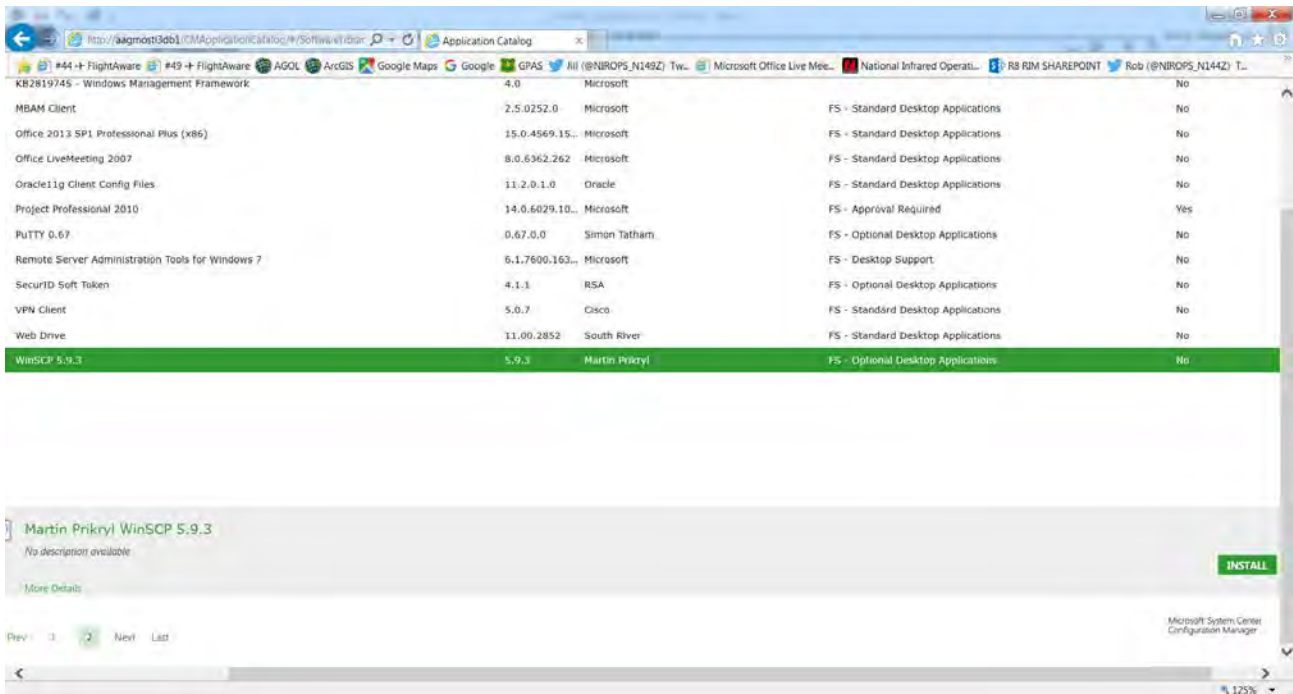
The following window will open up – you will click on the upper right side on the text “**Find additional applications from the Application Catalog**”:



The following window will come up – go to the bottom and click on page “2”



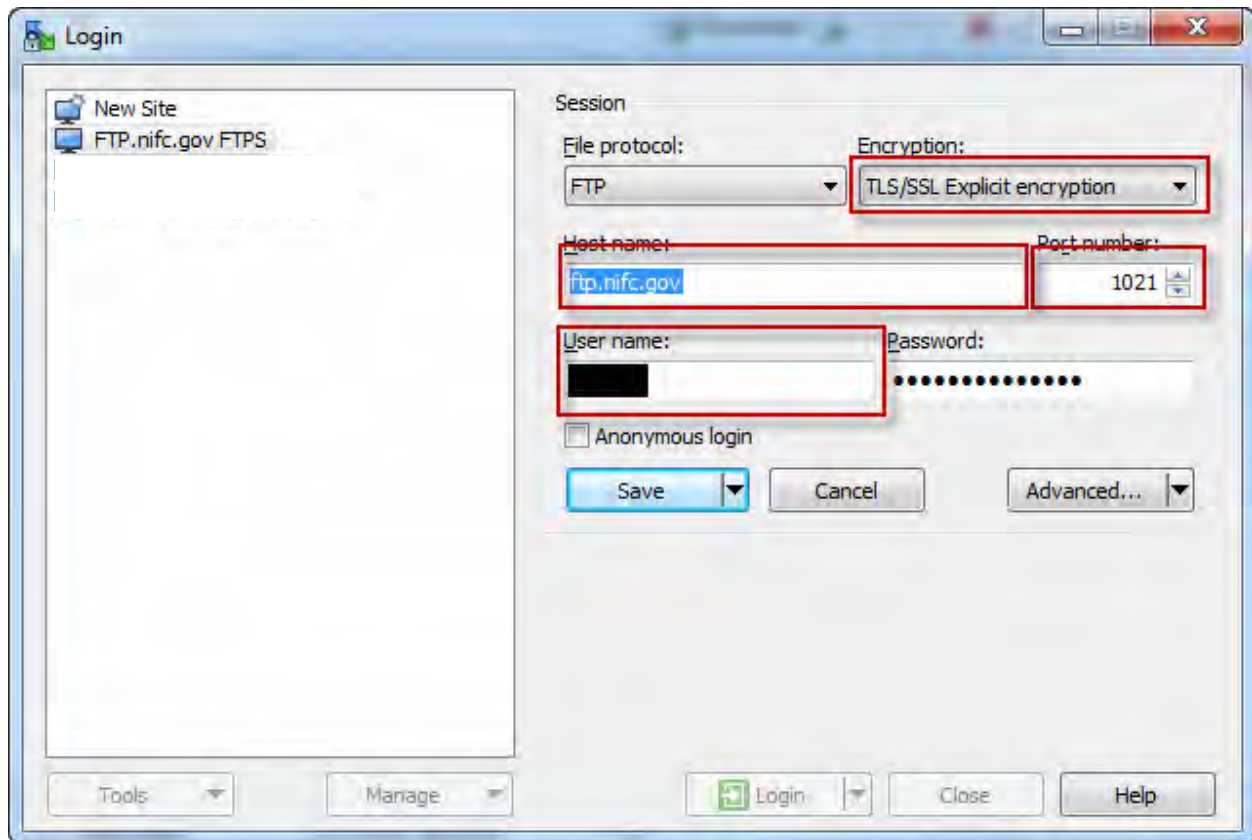
The following window will come up – click on WinSCP and then scroll to bottom right and click on Install.



After you have installed WinSCP, follow the below instructions to setup connection with NIFC ftp site.

1. Open WinSCP.
2. In the Login – WinSCP window, click “**New Site**” (upper left-hand corner)
3. Type or select the following:
 - a. File protocol: **FTP**

- b. Encryption: **TLS/SSL Explicit encryption**
- c. Host name: **ftp.nifc.gov**
- d. Port number: **1021**
- e. User name: <your NAP user name>
- f. Password: <your NAP password>



- 4. Click **Save**
- 5. In the “Save session as site” window, type in:
 - a. Site name: **ftp.nifc.gov FTPS** (replace any existing name)
 - b. Click OK
 - c. The new site name appears in the upper left-hand window

6. Select your site and click, "Login"