

Air Operations Map

Pinnacle Mtn Fire
 US-SC-SCS-110916
 11/23/2016
 Day Shift
 NAD83 UTM 17N
 7282 Acres
 11/23/16 0014 EST

Communications	
Air to Air	119.4500
Air to Ground	Tac 6

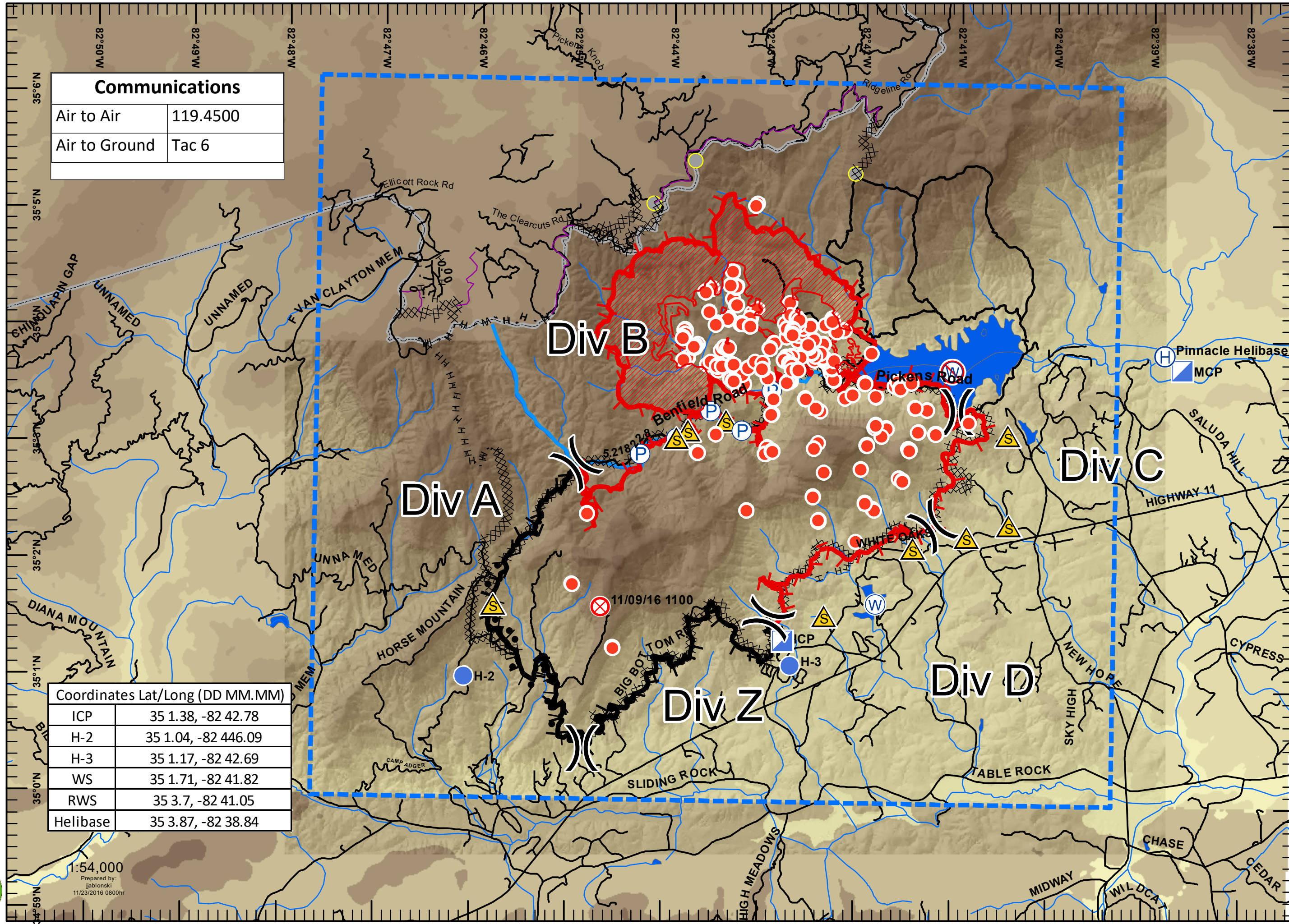
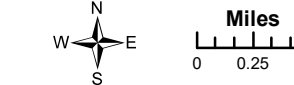
Legend

- Flight Restrictions
- Hot Spot
- Division
- Helibase
- Large Opening
- Fire Origin
- Helispot
- ICP
- Pump
- Safety Zone
- Water Source
- Restricted Water Source
- Completed Dozer Line
- Contained Line
- Uncontrolled Fire Edge
- Hand Line
- Completed Burnout
- Foothills Trail
- Escape Routes
- Roads
- South Saluda River
- Structures
- Scattered Heat
- Intense Heat

Legend

- Elevation (ft)
 <VALUE>
- 294 - 300
 - 300.0000001 - 400
 - 400.0000001 - 500
 - 500.0000001 - 600
 - 600.0000001 - 700
 - 700.0000001 - 800
 - 800.0000001 - 900
 - 900.0000001 - 1,000
 - 1,000.0000001 - 1,100
 - 1,100.0000001 - 1,200

Coordinates Lat/Long (DD MM.MM)	
ICP	35 1.38, -82 42.78
H-2	35 1.04, -82 446.09
H-3	35 1.17, -82 42.69
WS	35 1.71, -82 41.82
RWS	35 3.7, -82 41.05
Helibase	35 3.87, -82 38.84



1:54,000
 Prepared by:
 jjablonski
 11/23/2016 0800hr