

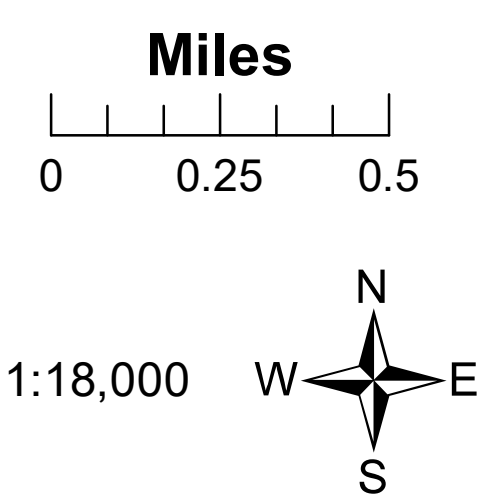
Air Ops Map

Pinnacle Mtn Fire
US-SC-SCS-110916
11/23/2016
Day Shift
NAD83 UTM 17N
7282 acres
11/23/2016 0014 EST

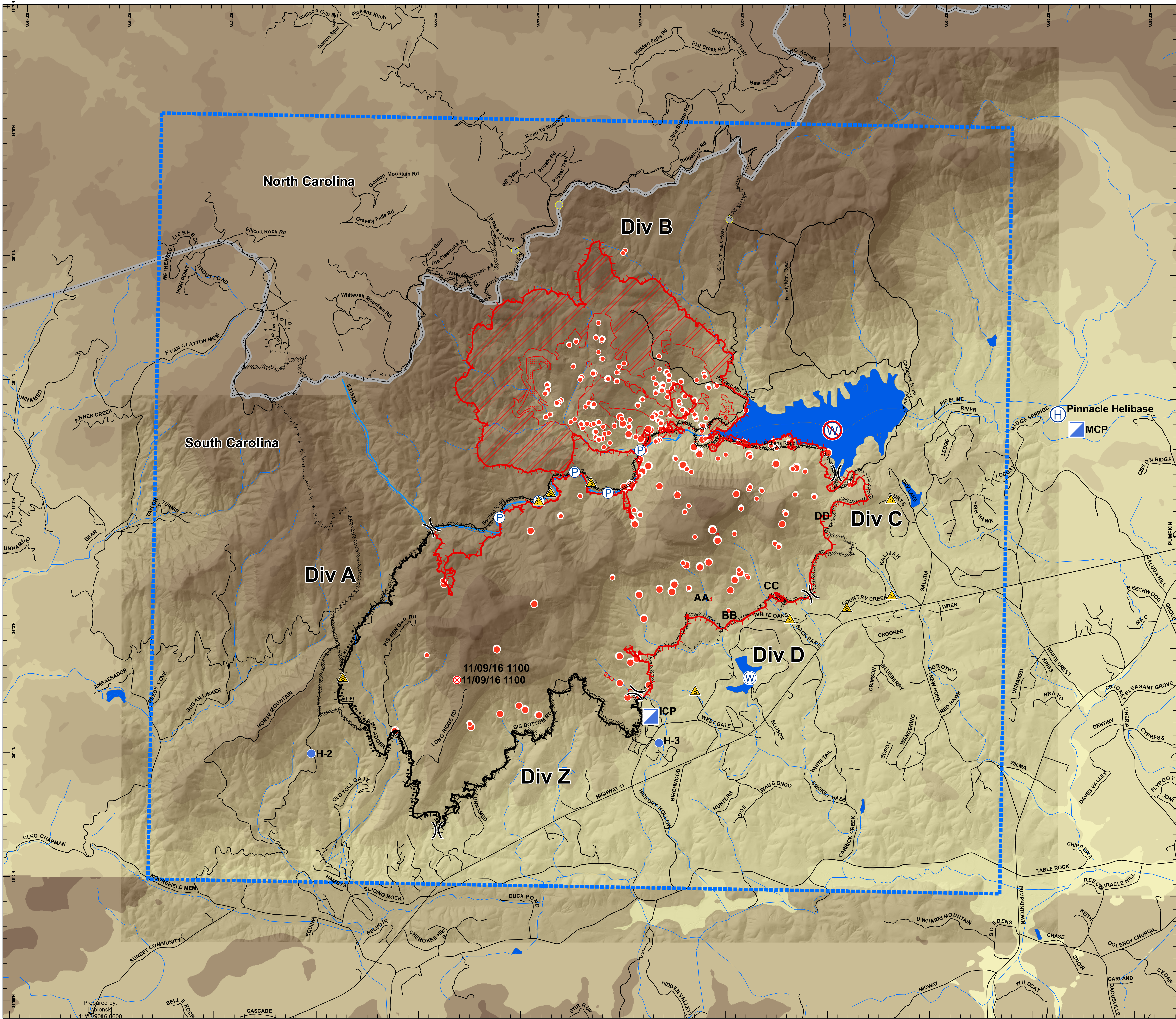
- Legend**
- Flight Restrictions
 - Division
 - Helibase
 - Fire Origin
 - Helispot
 - Incident Command Post
 - Pump
 - Safety Zone
 - Water Source
 - Restricted Water Source

- Completed Dozer Line
- Contained Line
- Uncontrolled Fire Edge
- Hand Line
- Completed Burnout
- Hot Spot
- Intense Heat
- Scattered Heat
- Large Opening
- Hydrology
- Roads
- South Saluda River
- sc_lakes
- State Boundary

- Elevation (ft)**
- 294 - 300
 - 300.0000001 - 400
 - 400.0000001 - 500
 - 500.0000001 - 600
 - 600.0000001 - 700
 - 700.0000001 - 800
 - 800.0000001 - 900
 - 900.0000001 - 1,000
 - 1,000.0000001 - 1,100
 - 1,100.0000001 - 1,200



CENTRAL UTAH
FIRE
INTERAGENCY



Prepared by: jalonksj
11/23/2016 0600