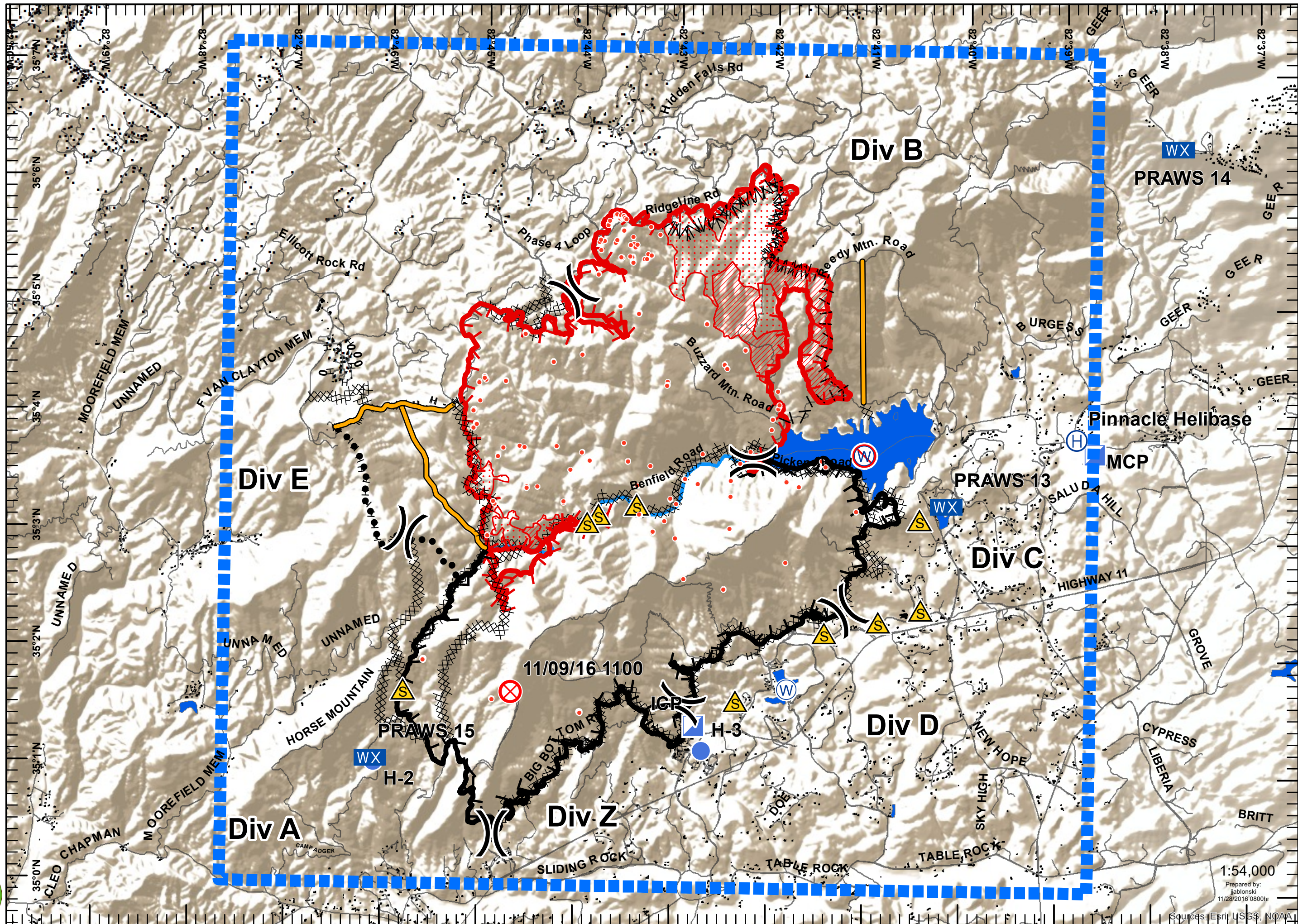


Air Operations Map

Pinnacle Mtn Fire
US-SC-SCS-110916
11/28/2016
Day Shift
NAD83 UTM 17N
10097 Acres
11/28/16 0103 EST

Legend

- TFR
- Division
- Uncontrolled Fire Edge
- Contained Line
- Completed Dozer Line
- Hand Line
- Line Break Completed
- Contingency Line
- Proposed Burnout
- 24HR Evac Trigger Point
- Roads
- Hot Spots
- IntenseHeat
- ScatteredHeat
- Fire Origin
- Mobile Weather Unit
- Helibase
- Helispot
- Incident Command Post
- Safety Zone
- Water Source
- Restricted Water Source



1:54,000
Prepared by:
jablonski
11/28/2016 0800hr

Sources: Esri, USGS, NOAA

Communication	
Air to Air	123.025
Air to Air	121.62.50
Air to Ground	Tac 6

Coordinates Lat/Long (DD MM.MM)	
ICP	35 1.38, -82 42.78
H-2	35 1.04, -82 446.09
H-3	35 1.17, -82 42.69
WS	35 1.71, -82 41.82
RWS	35 3.7, -82 41.05
Helibase	35 3.87, -82 38.84

Communication	
Air to Air	123.025
Air to Air	121.62.50
Air to Ground	Tac 6

Coordinates Lat/Long (DD MM.MM)	
ICP	35 1.38, -82 42.78
H-2	35 1.04, -82 446.09
H-3	35 1.17, -82 42.69
WS	35 1.71, -82 41.82
RWS	35 3.7, -82 41.05
Helibase	35 3.87, -82 38.84