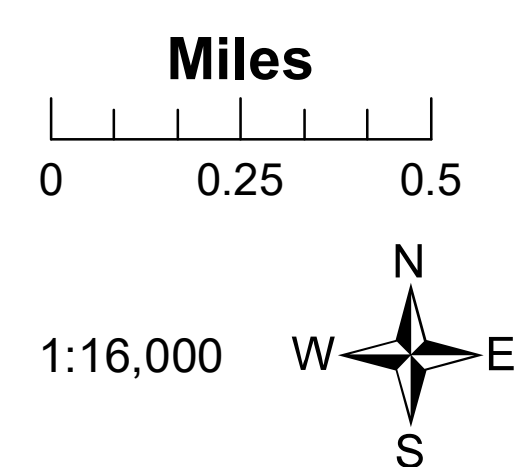


Briefing Map

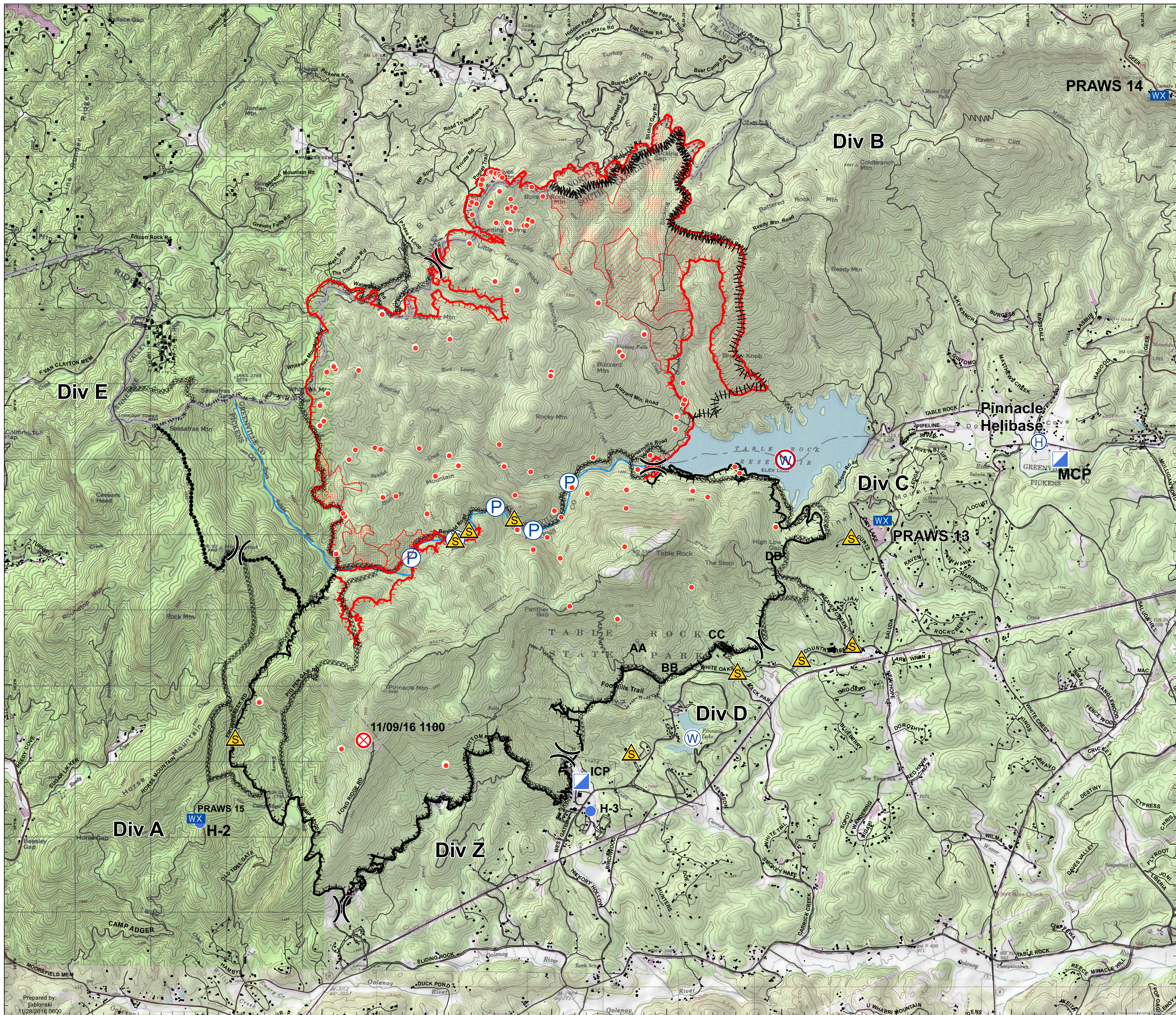
Pinnacle Mtn Fire
 US-SC-SCS-110916
 11/28/2016
 Day Shift
 NAD83 UTM 17N
 10097 acres
 11/28/2016 0103 EST

Legend

- Hot Spot
- Intense Heat
- Scattered Heat
-) Division
- H Helibase
- X Fire Origin
- Helispot
- ▬ Incident Command Post
- P Pump
- ▲ Safety Zone
- W Water Source
- W Restricted Water Source
- WX Mobile Weather Unit
- XXXXXX Completed Dozer Line
- MMMMM Line Break Completed
- ||||| Proposed Burnout
- Contingency Line
- Uncontrolled Fire Edge
- Contained Line
- - - - - Hand Line
- - - - - Foothills Trail
- Roads
- TableRock
- South Saluda River
- ▬ Structures
- ▭ State Boundary



CENTRAL UTAH
FIRE
 INTERAGENCY



Prepared by:
 jlablonski
 11/28/2016 0600