

Incident Action Plan Map

Pinnacle Mtn Fire
 US-SC-SCS-110916
 11/28/2016
 Day Shift
 NAD83 UTM 17N
 10097 Acres
 11/28/16 0103 EST

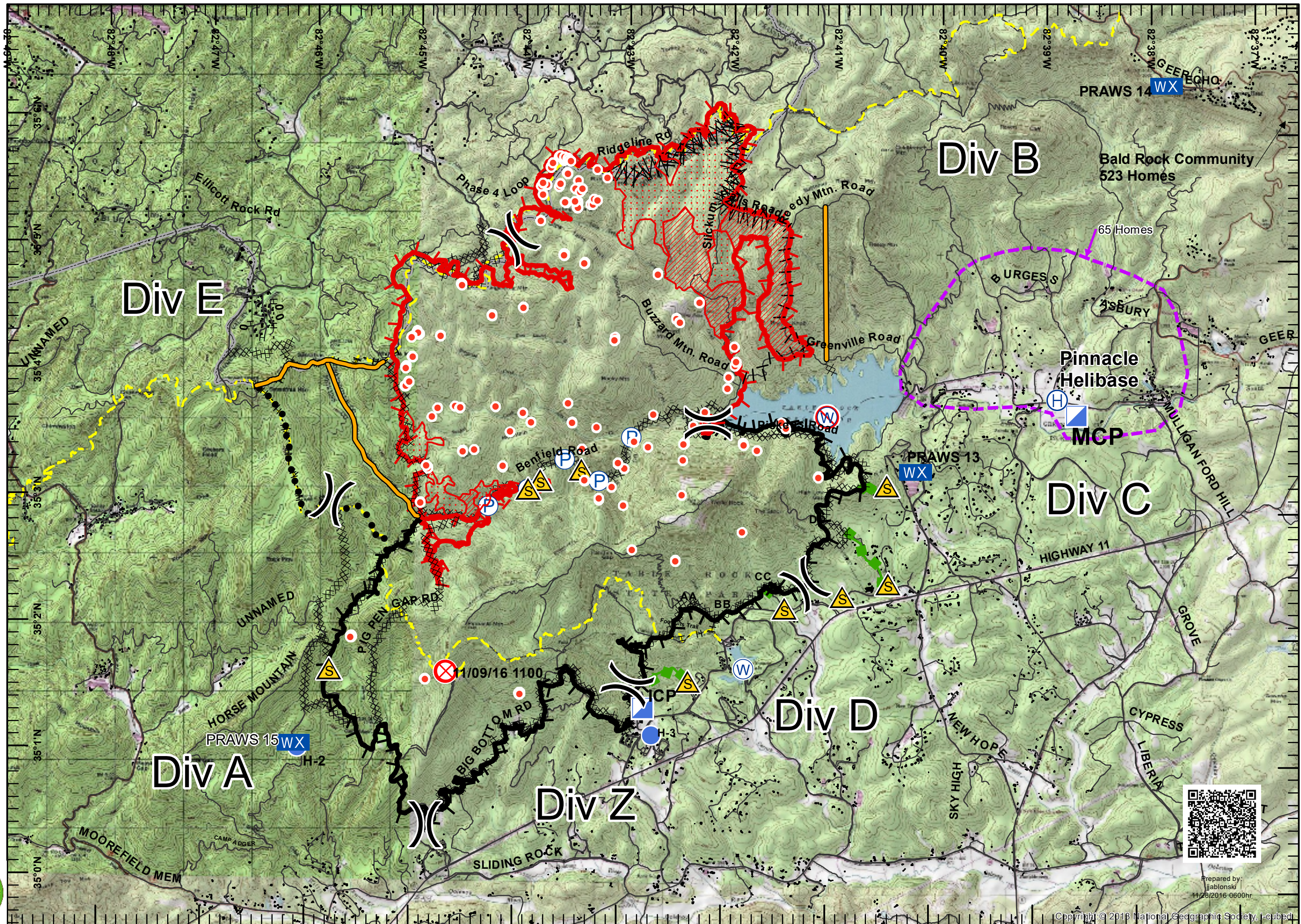
Legend

- (X) Division
- Hot Spot
- ▭ Scattered Heat
- ▨ Intense Heat
- XXXX Completed Dozer Line
- ⌋ Line Break Completed
- Contingency Line
- ⌋ Proposed Burnout
- H - Hand Line
- ▭ Contained Line
- ▭ Uncontrolled Fire Edge
- ▭ 24Hour Evac Trigger Point
- ▭ Foothills Trail
- ▭ Escape Routes
- ▭ Roads
- ▭ Structures
- ▭ State Boundary
- (H) Helibase
- Drop Point
- (X) Fire Origin
- (●) Helispot
- (▭) Incident Command Post
- (P) Pump
- (S) Safety Zone
- (W) Water Source
- (W) Restricted Water Source
- (WX) Mobile Weather Unit

Miles
 0 0.25 0.5



1:50,000



Prepared by:
 jablonski
 11/28/2016 0600hr