

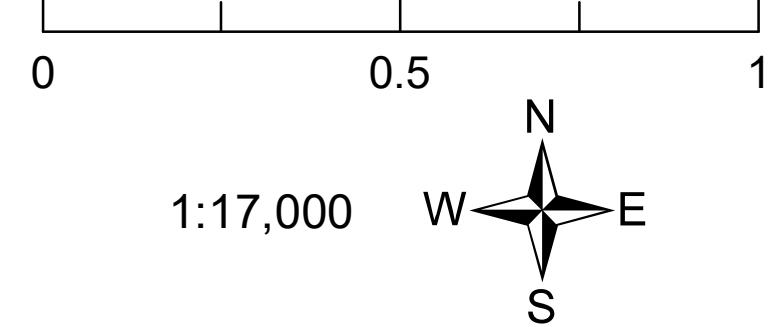
Briefing Map

Pinnacle Mtn Fire
 US-SC-SCS-110916
 12/04/2016
 Day Shift
 NAD83 UTM 17N
 10645 acres
 12/03/2016 1100 EST

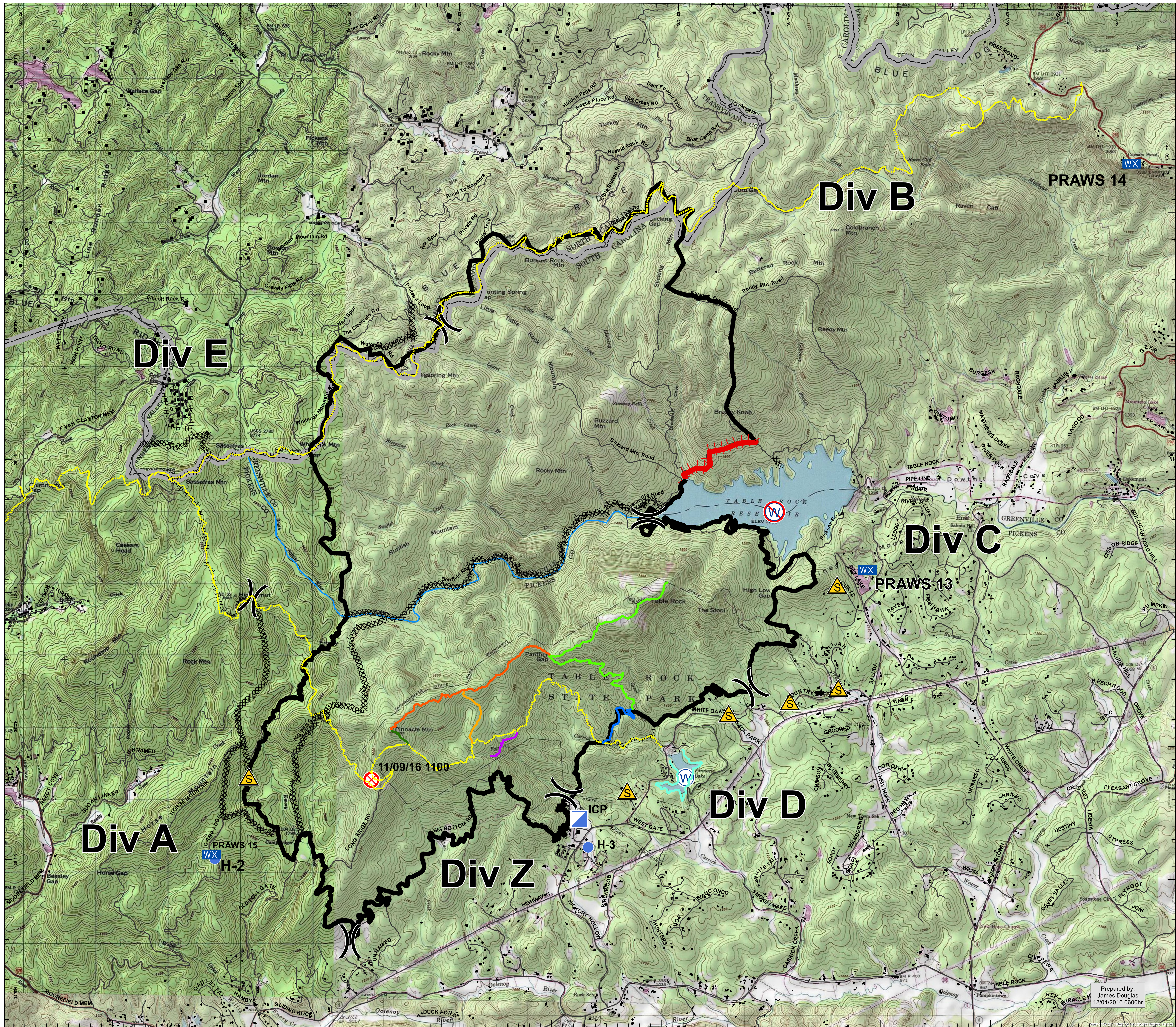
- Division
- Fire Origin
- Helispot
- Incident Command Post
- Safety Zone
- Water Source
- Restricted Water Source
- Mobile Weather Unit
- Completed Dozer Line
- Completed Line
- Uncontrolled Fire Edge
- Hand Line
- Roads
- South Saluda River
- Foothills Trail
- CCC Lakeside Trail, 1.5 mil
- Carrick Creek Trail, 0.8 mil
- Mill Creek Falls Spur, 0.4 mil
- Mill Creek Pass, 0.6 mil
- Pinnacle Mtn Trail, 0.2 mil
- Ridge Trail, 1.9 mil
- Table Rock Trail, 3.1 mil
- Structures
- State Boundary



Miles



CENTRAL UTAH
FIRE
 INTERAGENCY



Prepared by:
 James Douglas
 12/04/2016 0600hr