


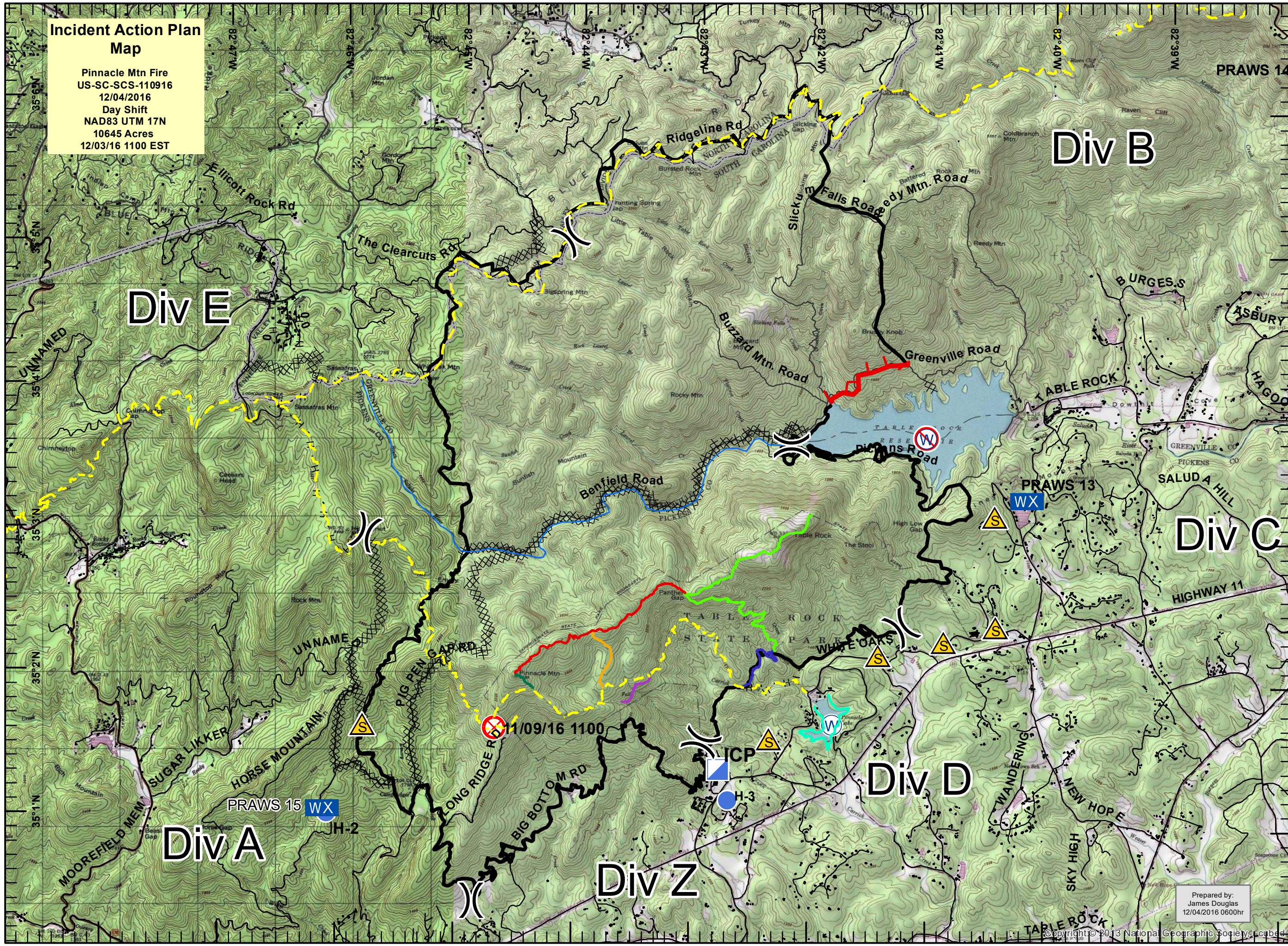
**Incident Action Plan Map**  
 Pinnacle Mtn Fire  
 US-SC-SCS-110916  
 12/04/2016  
 Day Shift  
 NAD83 UTM 17N  
 10645 Acres  
 12/03/16 1100 EST

- Division
- Fire Origin
- Incident Command Post
- Helispot
- Safety Zone
- Water Source
- Restricted Water Source
- Mobile Weather Unit

- Completed Dozer Line
- Completed Line
- Hand Line
- Uncontrolled Fire Edge
- Roads
- South Saluda River
- Foothills Trail
- CCC Lakeside Trail, 1.5 mil
- Carrick Creek Trail, 0.8 mil
- Mill Creek Falls Spur, 0.4 mil
- Mill Creek Pass, 0.6 mil
- Pinnacle Mtn Trail, 0.2 mil
- Ridge Trail, 1.9 mil
- Table Rock Trail, 3.1 mil
- Structures
- State Boundary



Miles  
 0 0.5 1  
 1:45,000  
 N  
 W E  
 S



Prepared by:  
 James Douglas  
 12/04/2016 0600hr