

82°46'0"W

82°45'0"W

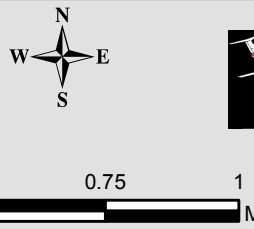
82°44'0"W

82°43'0"W

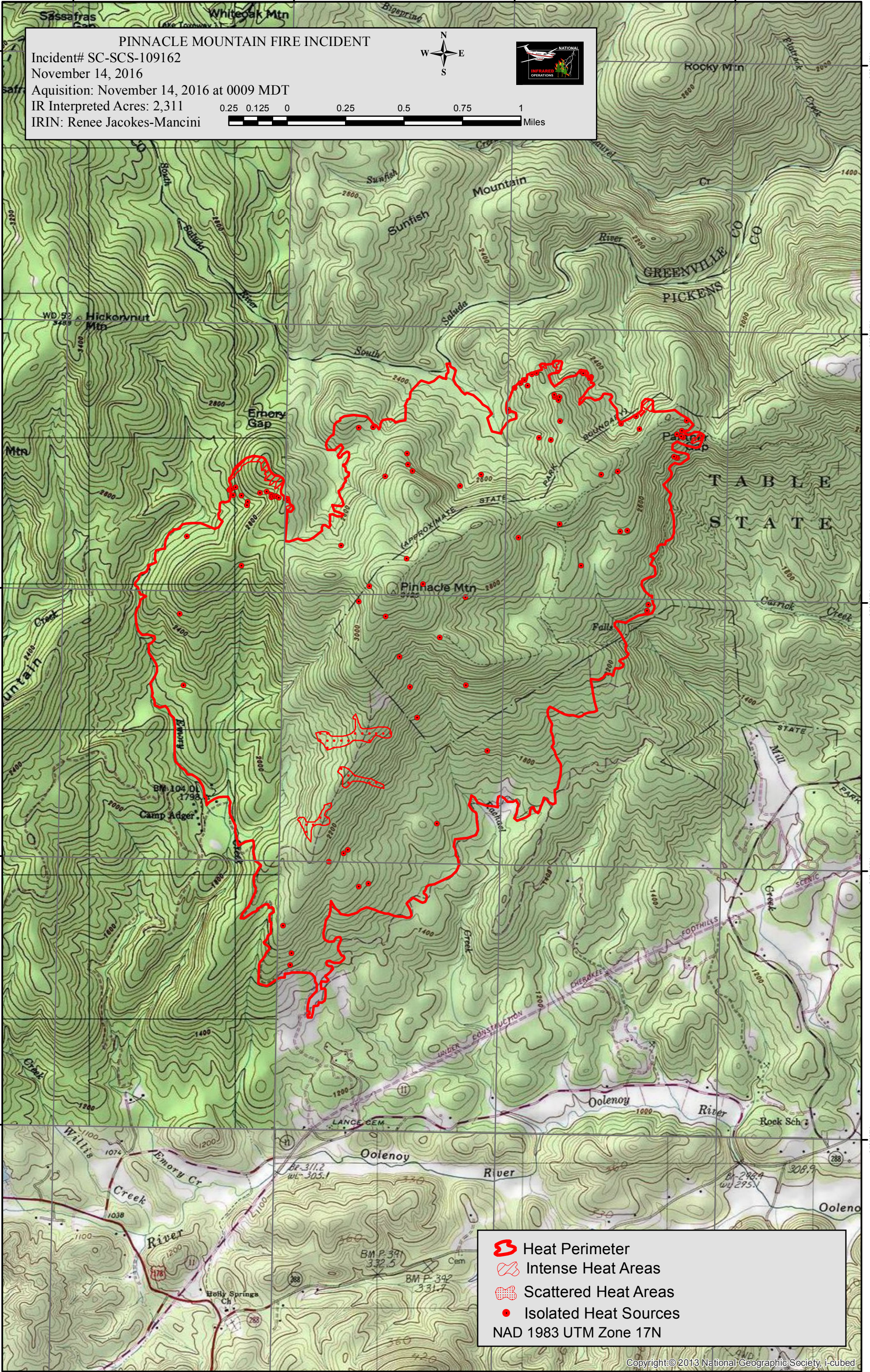
35°40'N
35°30'N
35°20'N
35°10'N
35°00'N





35°40'N
35°30'N
35°20'N
35°10'N
35°00'N

PINNACLE MOUNTAIN FIRE INCIDENT
 Incident# SC-SCS-109162
 November 14, 2016
 Aquisition: November 14, 2016 at 0009 MDT
 IR Interpreted Acres: 2,311
 IRIN: Renee Jacokes-Mancini



0.25 0.125 0 0.25 0.5 0.75 1 Miles



-  Heat Perimeter
-  Intense Heat Areas
-  Scattered Heat Areas
-  Isolated Heat Sources

NAD 1983 UTM Zone 17N

82°46'0"W

82°45'0"W

82°44'0"W

82°43'0"W