

82°46'0"W

82°45'0"W

82°44'0"W

82°43'0"W

PINNACLE MOUNTAIN FIRE INCIDENT

Incident# SC-SCS-109162

November 15, 2016

Aquisition: November 14, 2016 at 1912 MDT

IR Interpreted Acres: 2,765

IRIN: Renee Jacokes-Mancini



35°40'N

35°30'N

35°20'N

35°10'N

35°00'N

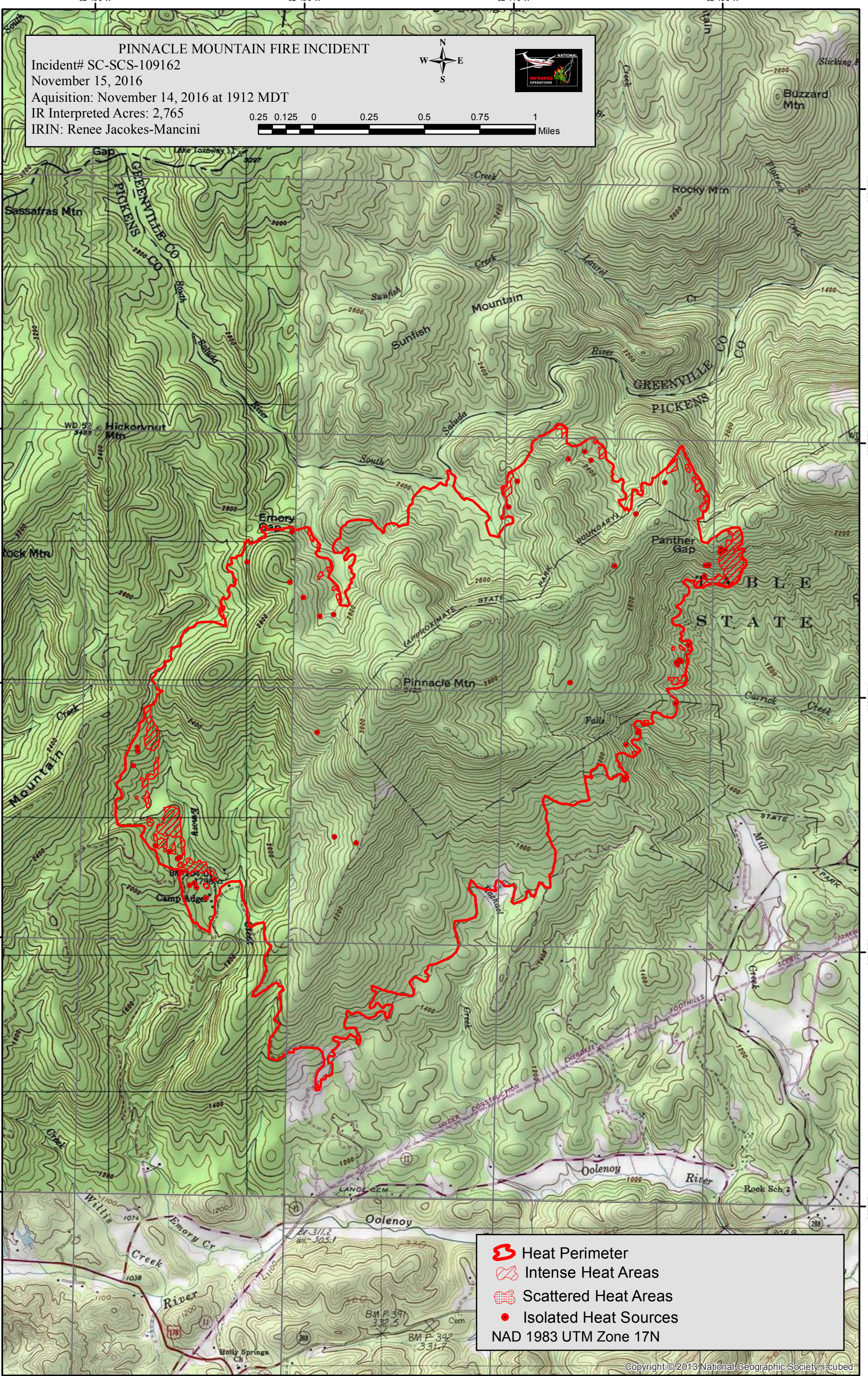
35°40'N

35°30'N

35°20'N

35°10'N

35°00'N



- Heat Perimeter
- Intense Heat Areas
- Scattered Heat Areas
- Isolated Heat Sources

NAD 1983 UTM Zone 17N

82°46'0"W

82°45'0"W

82°44'0"W

82°43'0"W