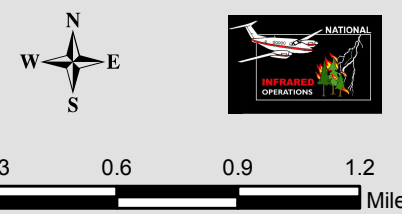


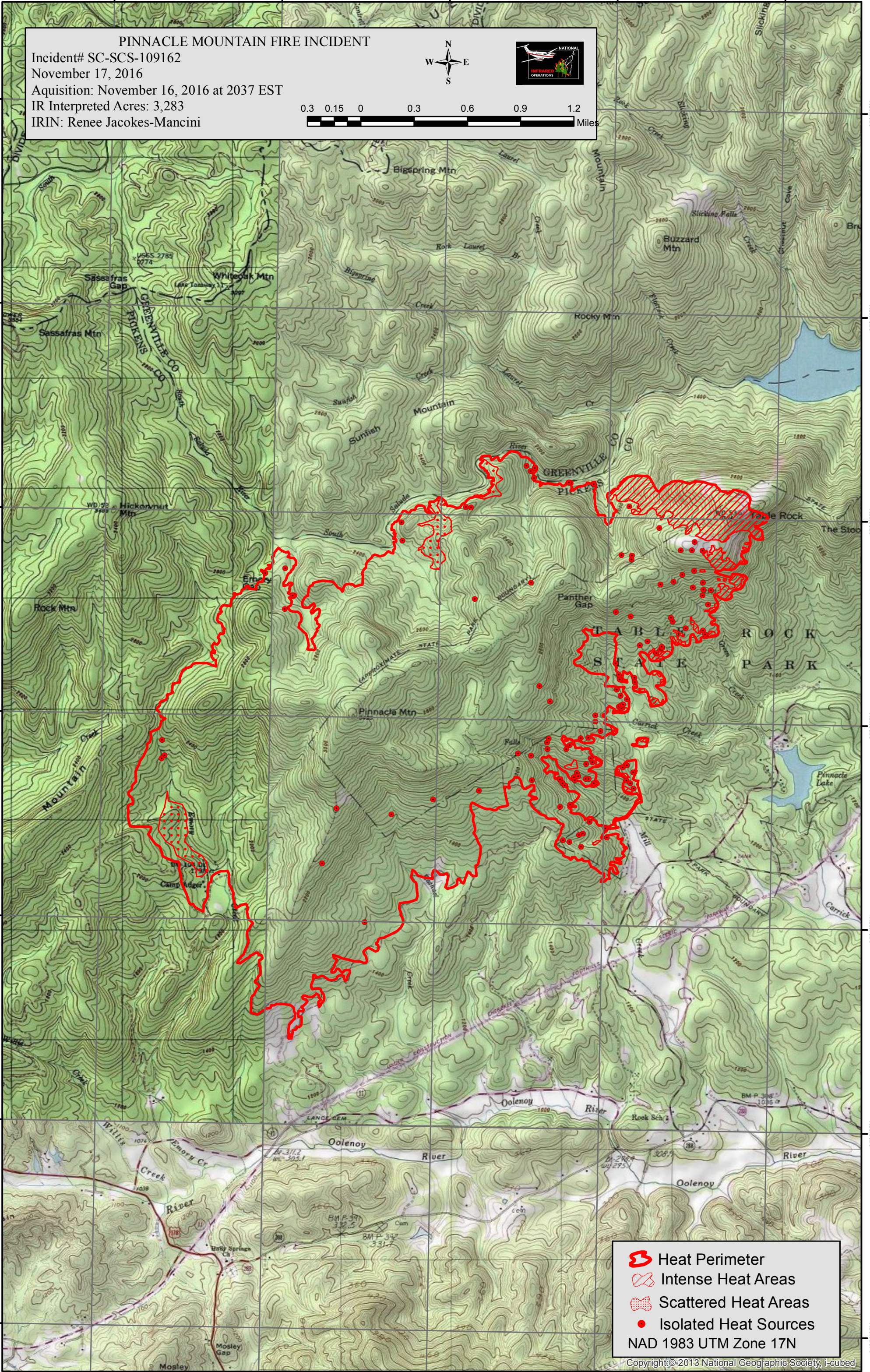
82°46'0"W 82°45'0"W 82°44'0"W 82°43'0"W 82°42'0"W





35°50'N 35°40'N 35°30'N 35°20'N 35°10'N 35°00'N 34°50'N

**PINNACLE MOUNTAIN FIRE INCIDENT**  
 Incident# SC-SCS-109162  
 November 17, 2016  
 Aquisition: November 16, 2016 at 2037 EST  
 IR Interpreted Acres: 3,283  
 IRIN: Renee Jacokes-Mancini



0.3 0.15 0 0.3 0.6 0.9 1.2 Miles



-  Heat Perimeter
-  Intense Heat Areas
-  Scattered Heat Areas
-  Isolated Heat Sources

NAD 1983 UTM Zone 17N

82°46'0"W 82°45'0"W 82°44'0"W 82°43'0"W 82°42'0"W