

# 2023 SOUTHERN BLUE RIDGE TRAINING EXCHANGE

IQS Incident Number: 2023-SBR-TREX  
IQCS Incident Number: 2023-SC-SOCN-SBR TREX



Monday, November 6, 2023  
Day 8







## ORGANIZATION ASSIGNMENT LIST (ICS 203)

<b>1. Incident Name:</b> 2023 SBR TREX		<b>2. Operational Period:</b> Date From: 11/6/2023 Time From: 0700		<b>Date To:</b> 11/6/2023 <b>Time To:</b> 2000	
<b>3. Incident Commander(s) and Command Staff:</b>			<b>7. Operations Section:</b>		
IC/UCs	Tom Dooley (865) 850-9542	Planning Chief	Dean Simon		
		Field Chief	Devin Yeatman (410) 320-2742		
		Module Alpha	Sami Schinnell	Andrew Slack	
Safety Officer	Brian Plume (570) 439-3969	Module Bravo	Erica Zacek	Nathan Hunter	
Public Info. Officer	Jen Bunty (321) 745-5941	Module Charlie	Katie Sauerbrey	Greg Reese	
Public Info. Officer	Brad Bramlett (864) 915-1924				
Liaison Officer	Michael Weeks (864) 910-0052				
<b>4. Agency/Organization Representatives:</b>		<b>Branch</b>			
Agency/Organization	Name	Branch Director			
SC Forestry Commission	Michael Weeks (864) 910-0052	Deputy			
NC Forest Service	Michael Cheek (828) 231-2691	Division/Group			
USFS	Wes Bentley (864) 888-7553	Division/Group			
		<b>Branch</b>			
		Branch Director			
		Deputy			
<b>5. Planning Section:</b>		Division/Group			
Chief (10/30-11/4)	James Douglas (803) 360-6882	Division/Group			
Chief (11/4-11/5)	Ben Kendall (803) 968-4817	Division/Group			
Chief (11/5-11/9)	Mike Bozzo	Division/Group			
Situation Unit		Division/Group			
Documentation Unit		<b>Branch</b>			
Demobilization Unit		Branch Director			
Training Specialist	Nikole Simmons (804) 400-7814	Deputy			
Training Specialist	Michael Weeks (864) 910-0052	Division/Group			
GIS Specialist (10/30-11/4)	James Douglas (803) 360-6882	Division/Group			
GIS Specialist (11/4-11/10)	Ben Kendall (803) 968-4817	Division/Group			
<b>6. Logistics Section:</b>		Division/Group			
Chief	Helen Mohr (864) 940-7118	Division/Group			
Deputy					
<b>Support Branch</b>					
Director					
Supply Unit					
Facilities Unit (10/30-11/2)	Chris Revels	<b>8. Finance/Administration Section:</b>			
Facilities Unit (11/2-11/9)	David Owen	Chief	Susan Gensel		
<b>Service Branch</b>		Deputy			
Director		Time Unit			
Communications Unit	Lloyd Mitchell (843) 992-2368	Procurement Unit			
Medical Unit		Comp/Claims Unit			
Food Unit		Cost Unit			
<b>9. Prepared by:</b> Name: Ben Kendall Position/Title: PSC Signature: _____					
<b>ICS 203</b>	IAP Page _____	Date/Time: 11/5/2023 1600			

## South Carolina

SCZ101>103-060900-

Oconee Mountains-Pickens Mountains-Greenville Mountains-  
Including the cities of Mountain Rest, Rocky Bottom,  
and Glassy Mountain

233 PM EST Sun Nov 5 2023

	Tonight	Mon	Mon Night	Tue
Cloud Cover	Clear	Clear	MClear	MClear
Chance Precip (%)	0	0	0	0
Precip Type	None	None	None	None
Min/Max Temp	44	71	48	75
Max/Min RH %	85	37	87	40
Wind 20FT/Early(MPH)	N 4	NE 3	W 4	NW 4
Wind 20FT/Late(MPH)	N 3	S 5	W 4	SW 6
Precip Duration	0	0	0	0
Precip Amount	0.00	0.00	0.00	0.00
Precip Begin				
Precip End				
LAL	1	1	1	1
Inversion(Temp/Time)	1800	48/0800	2200	53/0800
Dispersion	Poor		Poor	
DSI		2		2
Mixing Hgt(FT-AGL)		5600		4800
Transport Wnd (MPH)		SW 10		SW 13
Vent Rate (MPH-FT)		56000		62400
ADI Early	2 Very Poor	19 Gen Poor	3 Very Poor	35 Fair
ADI Late	2 Very Poor	57 Gen Good	2 Very Poor	64 Good
Max LVORI Early	3	5	3	5
Max LVORI Late	5	1	5	1
Min VSBY Early	10	10	10	
Min VSBY Late	10	10	10	
Turner Stability	7	2	6	2

Remarks: ADI is Atmospheric Dispersion Index by Lavdas.  
LVORI is Low Visibility Occurrence Risk Index.

.FORECAST FOR DAYS 3 THROUGH 7...

.TUESDAY NIGHT AND WEDNESDAY...Clear. Lows around 50. Highs in the mid 70s. Minimum RH 50 percent. Northwest winds around 5 mph.

.WEDNESDAY NIGHT AND THURSDAY...Partly cloudy. Lows in the mid 50s. Highs in the mid 70s. Minimum RH 53 percent. West winds around 5 mph.

.THURSDAY NIGHT AND FRIDAY...Mostly cloudy with a chance of showers. Cooler. Lows in the mid 50s. Highs in the mid 60s. Minimum RH 75 percent. West winds 5 to 10 mph.

.FRIDAY NIGHT AND SATURDAY...Mostly cloudy. A chance of showers. Lows in the upper 40s. Highs in the upper 50s. Minimum RH 63 percent. North winds around 5 mph.

.SATURDAY NIGHT AND SUNDAY...Mostly cloudy. Lows in the lower 40s. Highs in the mid 50s. Minimum RH 62 percent. Northeast winds around 5 mph.

## North Carolina

NCZ048-052-053-064-065-507-509-060900-  
 Madison-Haywood-Buncombe-Transylvania-Henderson-  
 Rutherford Mountains-Polk Mountains-

Including the cities of Faust, Mars Hill, Marshall, Walnut,  
 Allenstand, Hot Springs, Luck, Waynesville, Waterville, Canton,  
 Cruso, Cove Creek, Asheville, Black Mountain, Candler, Brevard,  
 Cedar Mountain, Little River, Hendersonville, Fletcher, Dana,  
 East Flat Rock, Tuxedo, Etowah, Chimney Rock State Park,  
 and Saluda

233 PM EST Sun Nov 5 2023

	Tonight	Mon	Mon Night	Tue
Cloud Cover	Clear	Clear	MClear	MClear
Chance Precip (%)	0	0	0	0
Precip Type	None	None	None	None
Min/Max Temp	40	68	46	71
Max/Min RH %	92	36	89	40
Wind 20FT/Early(MPH)	NW 4	S 3	SW 5	NW 5
Wind 20FT/Late(MPH)	SW 3	SW 5	SW 4	W 7
Precip Duration	0	0	0	0
Precip Amount	0.00	0.00	0.00	0.00
Precip Begin				
Precip End				
LAL	1	1	1	1
Inversion(Temp/Time)	1900	44/0800	2100	50/0800
Dispersion	Very Poor		Fair	
Haines Index	4	3	5	4
DSI		2		2
Mixing Hgt(FT-AGL)		6000		4600
Transport Wnd (MPH)		SW 10		W 12
Vent Rate (MPH-FT)		60000		55200
ADI Early	3 Very Poor	30 Fair	3 Very Poor	43 Gen Good
ADI Late	2 Very Poor	58 Gen Good	3 Very Poor	45 Gen Good
Max LVORI Early	4	6	3	5
Max LVORI Late	6	1	5	1
Min VSBY Early	9	9	10	
Min VSBY Late	9	10	10	
Turner Stability	7	2	6	2

Remarks: ADI is Atmospheric Dispersion Index by Lavdas.  
 LVORI is Low Visibility Occurrence Risk Index.

.FORECAST FOR DAYS 3 THROUGH 7...

.TUESDAY NIGHT AND WEDNESDAY...Mostly clear. Lows in the upper  
 40s. Highs in the lower 70s. Minimum RH 48 percent. South winds  
 around 5 mph.

.WEDNESDAY NIGHT AND THURSDAY...Partly cloudy. Lows in the lower  
 50s. Highs in the lower 70s. Minimum RH 56 percent. Southwest  
 winds around 5 mph.

.THURSDAY NIGHT AND FRIDAY...Mostly cloudy with a chance of  
 showers. Cooler. Lows in the lower 50s. Highs in the upper 50s.  
 Minimum RH 79 percent. Southwest winds around 5 mph.

.FRIDAY NIGHT AND SATURDAY...Mostly cloudy. A chance of rain  
 showers. Lows in the lower 40s. Highs in the lower 50s. Minimum  
 RH 63 percent. North winds around 5 mph.

.SATURDAY NIGHT AND SUNDAY...Mostly cloudy. Lows in the upper  
 30s. Highs in the lower 50s. Minimum RH 60 percent. North winds  
 around 5 mph.



## ASSIGNMENT LIST (ICS 204)

<b>1. Incident Name:</b> 2023 SBR TREX		<b>2. Operational Period:</b> Date From: 11/6/2023      Date To: 11/6/2023 Time From: 0700              Time To: 2000		<b>3.</b> <b>Division: Poplar</b>  <b>Wildfire</b>  <b>Module: BRAVO</b>  <b>Staging Area:</b>
<b>4. Operations Personnel:</b> Operations Section Chief: _____ Division Group Supervisor: <u>Nate Hunter TFLD</u> Division/Group Supervisor: _____				
<b>5. Resources Assigned:</b>		<b># of Persons</b>	<b>Contact (e.g., phone, pager, radio frequency, etc.)</b>	<b>Reporting Location, Special Equipment and Supplies, Remarks, Notes, Information</b>
<b>Resource Identifier</b>	<b>Position</b>			
Erica Zacek	FIRB	1		
Sonya Kaufman	FIRB(t)	1		NC State Park Type 6
Kimberly Boltinhouse	ENGB	1		NC State Park Type 6
Sharon Becker	ENGB(t)	1		NC State Park UTV
Nathan Speagle	FFT1	1		
Danielle Cagin	FFT1(t)	1		
Igor Galiev	FFT2	1		
Jessica Donvito	FFT2	1		
Patrick Ma	FFT2	1		
Austin Williams	FFT2	1		
Jacob McDaniel	FEMO(t)	1		
<b>6. Work Assignments:</b> Continue to assist with firefighting efforts				
<b>7. Special Instructions:</b> This is a suggestion of folks that haven't been in training roles, please adjust at your discretion to your needs.  Please track any additional training and report on charts.				
<b>8. Communications</b> (radio and/or phone contact numbers needed for this assignment):				
CHANNEL	FUNCTION	CHANNEL NAME		
1	/ COMMAND	_____		
3	/ TACTICAL	_____		
7	/ TACTICAL	_____		
	/	_____		
<b>9. Prepared by:</b> Name: <u>Ben Kendall</u> Position/Title: <u>PSC 3 (T)</u> Signature: _____				
<b>ICS 204</b>	<b>IAP Page</b> _____	Date/Time: <u>11/5/2023 1600</u>		



## ASSIGNMENT LIST (ICS 204)

<b>1. Incident Name:</b> Southern Blue Ridge TREX		<b>2. Operational Period:</b> Date From: 11/6/2023      Date To: 11/6/2023 Time From: 0600              Time To: 2000		<b>3.</b> <b>Burn Unit: Poplar</b>  <b>Wildfire</b>  <b>Division: Bravo</b>  <b>Module: CHARLIE</b>  <b>Staging Area:</b>
<b>4. Operations Personnel:</b> Operations Section Chief: _____ Division Group Supervisor: <u>Mike Tateishi (DIVS)</u> Division/Group Supervisor: <u>Katie Sauerbrey (DIVSt)</u>				
<b>5. Resources Assigned:</b>		<b># of Persons</b>	<b>Contact (e.g., phone, pager, radio frequency, etc.)</b>	<b>Reporting Location, Special Equipment and Supplies, Remarks, Notes, Information</b>
<b>Resource Identifier</b>	<b>Position</b>			
Gregg Reese	STEN	1		NC State Park Type 6
Bonnie Weyant-Morgan	STEN(t)	1		SC TNC UTV
Tyler Cross	ENGB(t)	1		
Deb Mauer	FIRB	1		
Scott Avis	FIRB(t)	1		
Tom Ludka	FFT1	1		
Jarred Sparks	FFT1(t)	1		
Brandon Kuhn	FFT1	1		
Trey Hucks	FFT1(t)	1		
Gregg Philipp	FFT2	1		
Will Evans	FFT2	1		
Eric Rawlins	FFT2	1		
Maya Phillipp	FFT2	1		
Dana Hodde	FFT2	1		
Silas Lindsey	FFT2	1		
<b>6. Work Assignments:</b> Continue to assist with firefighting efforts.				
<b>7. Special Instructions:</b> This is a suggestion of folks that haven't been in training roles, please adjust at your discretion to your needs.  Please track any additional training and report on charts.				
<b>8. Communications</b> (radio and/or phone contact numbers needed for this assignment):				
<b>CHANNEL</b>	<b>FUNCTION</b>	<b>CHANNEL NAME</b>		
1	/ COMMAND	_____		
4	/ TACTICAL	_____		
7	/ TACTICAL	_____		
_____	/	_____		
<b>9. Prepared by:</b> Name: <u>Ben Kendall</u> Position/Title: <u>PSC 3 (T)</u> Signature: _____				
<b>ICS 204</b>	<b>IAP Page</b> _____	Date/Time: 11/5/2023 1600		

INCIDENT RADIO COMMUNICATIONS PLAN			Incident Name <b>2023 SBR TREX</b>		Date/Time Prepared <b>10-31-2023 0700hrs</b>			SOUTH CAROLINA REV. D	
Ch #	Function	/Trunked Radio System Talkgroup	Assignment	MO RX Freq N or W	RX Tone/NAC	MO TX Freq N or W	Tx Tone/NAC	Mode	Remarks
1	COMMAND	LONGCREEK	DIV A,B,C	171.1375 N	110.9	166.2625 N	110.9	A	
2	TACTICAL	SC TAC 2	DIV A	151.2275 N	203.5	151.2275 N	203.5	A	
3	TACTICAL	SC TAC 3	DIV B	151.3550 N	203.5	151.3550 N	203.5	A	
4	TACTICAL	VFIRE 26	DIV C	154.3025	CSQ	154.3025	CSQ	A	
5	TACTICAL	SCTAC 4		151.4000 N	203.5	151.4000 N	203.5	A	
6	TACTICAL	SCTAC 5		151.2800 N	203.5	151.2800 N	203.5	A	
7	TACTICAL	REG 8 FIRE	DIV A,B,C	166.5625 N	CSQ	166.5625 N	CSQ	A	
8	COMMAND	SC LONG MT	EMERGENCY	159.2250 N	371 DPL	151.1000 N	371 DPL	A	OFFSITE ASSISTANCE ONLY
9	COMMAND	SC GLASSY MT	EMERGENCY	159.4050 N	365 DPL	151.2350 N	365 DPL	A	OFFSITE ASSISTANCE ONLY
10	COMMAND	SC CORBIN MT	EMERGENCY	159.4500 N	364 DPL	151.3375 N	364 DPL	A	OFFSITE ASSISTANCE ONLY
	TACTICAL	FIRE 1		168.6750 N	103.5	168.6750	103.5	A	
12									
13									
14									
15	AIR to Ground	Fed A/G	EMERGENCY	167.525	CSQ	167.525	CSQ	A	
16	NOAA WX	WX RECEIVE		162.550	CSQ	N/A	N/A	A	
5. Prepared by (Communications Unit) Lloyd Mitchell COML SC Forestry Commission					Incident Location <b>SBR TREX Base Camp</b> County <b>Pickens</b> State <b>SC</b> Latitude/Longitude <b>35.03, -82.71</b>				

The convention calls for frequency lists to show four digits after the decimal place, followed by either an "N" or a "W", depending on whether the frequency is narrow or wide band. Mode refers to either "A" or "D" indicating analog or digital (Project 25)

INCIDENT RADIO COMMUNICATIONS PLAN			Incident Name <b>2023 SBR TREX</b>			Date/Time Prepared <b>10-31-2023 1315hrs</b>		NORTH CAROLINA REV. A		
Ch #	Function	/Trunked Radio System Talkgroup	Assignment	MO RX Freq N or W	RX Tone/NAC	MO TX Freq N or W	Tx Tone/NAC	Mode	Remarks	
1	COMMAND	COWEE RPT		151.1750 N	88.5	159.4200	114.3	A		
2	TACTICAL	SCALY RPT		171.7850 N	100.0	164.9375 N	103.5	A		
3	TACTICAL	A/G 13		167.4250 N	CSQ	167.4250 N	110.9	A		
4	TACTICAL	REG8 FIRE		166.5625 N	CSQ	166.5625	CSQ	A		
5	TACTICAL	D9 TAC		151.2800 N	131.8	151.2800 N	131.8	A		
6	TACTICAL	BEAR WALLOW RPT		151.4750 N	88.5	159.3600 N	88.5	A		
7	TACTICAL	NCFS INC 1		151.4000 N	136.5	151.4000 N	136.5	A		
8	COMMAND	NCFS INC 4		151.2650 N	136.5	151.2650 N	136.5	A		
9	COMMAND	VTAC 12		154.4525 N	CSQ	154.4525 N	156.7	A		
10	COMMAND	VTAC 13		158.7375 N	CSQ	158.7375	156.7	A		
11										
12										
13										
14										
15	AIR to Ground	Fed A/G	EMERGENCY	167.525	CSQ	167.525	CSQ	A		
16	NOAA WX	WX RECEIVE		162.550	CSQ	N/A	N/A	A		
5. Prepared by (Communications Unit) <b>Lloyd Mitchell COML SC Forestry Commission</b>					Incident Location <b>SBR TREX Base Camp</b> County <b>Pickens</b> State <b>SC</b> Latitude/Longitude <b>35.03, -82.71</b>					

## ICS 205A

<b>1. Incident Name:</b> SBR TREX 2023		<b>2. Operational Period:</b> Date From: 10/29/23      Date To: 11/10/23 Time From: 0700 Time To: 2000			<b>3.</b> Branch: Division: ALL Group: Staging Area:	
<b>4. Operations Personnel:</b> Operations Section Chief: Devin Yeatman						
Name _____						
<b>5. Resources Assigned:</b>						
Resource Identifier	Name	Phone Number	Qualified Positions	Positions / Alternate Trainee Positions		
NCP A	Andrew Slack	984-289-3446	ENGB, FAL1, FFT1, FFT2, FIRB, ICT4, ICT5, RXB2	TFLD		
TNC A	Sami Schinell	928-607-2672	ICT4, TFLD, DIVS			
NPS A	Kevin Riggs	970-612-6094	ATVO-Fed, CRWB, ENGB, FAL2, FFT1, FFT2, FIRB, HECM, HEQB, ICT4, ICT5, TFLD, UTVO-Other	RXB2, FEMO		
USFS A	Liz Skelly	803-237-2669	ENGB, ENOP, FAL2, FFT1, FFT2, ICT5	FIRB		
BLM A	Kylee Stott	385-272-3894	ATVO-Other, ENGB, ENOP, FAL3, FFT1, FFT2, ICT4, ICT5, UTVO- FED, UTVO-Other	FIRB		
NPS A	Wylie Paxton	828-545-7508	ATVO-ASI, ATVO-Fed, ATVO-NATL, FAL3, FEMO, FFT1, FFT2, HECM, ICT5, UTVO-ASI, UTVO-Fed, UTVO-NATL, READ, REAF	ENGB, FIRB, FAL2		
NCP A	Sydney Watson	205-213-2840	FAL3, FFT1, FIRB	ICT5, ENGB		
PaBF A	Joe Engel	570-916-3110	ATVO-NATL, ENGB, ENOP, FAL2, FAL3, FFT1,	HEQB, FALB		
BFD A	Matt A. Henne	843-247-4390	EMT, EMTF, FAL3, FFT2	FFT1, FAL2		
BLM A	Jared Chong	509-301-7064	EMT, EMTF, ENOP, FAL3, FFT1, FFT2, HEQB, UTVOF	FIRB		
NCP A	Emily Curry	804-929-5248	FFT2	FFT1		
Studen A	Annabelle Tao	650-787-8010	FEMO, FFT2	FFT1		
TNC A	Josh Frick	724-599-7608	FAL3, FFT1, FIRB	FEMO, FAL2, SRB		
BLM B	Nathan Hunter	801-541-0489	DIVS, ENGB, ENOP, ICT3, ICT4, RXB2, TFLD, UTVOF	FEMO, RXB2		
USFS B	Erica Zacek	315-749-4161	ENGB, FAL2, FFT1, FIRB, ICT4, RXB2	TFLD		
USFS B	Kimberly Boltinhouse	252-341-7422	ENGB, FAL2, FFT1, FIRB, HECM, ICT5, UTVO-Fed	RXB3, PLDO		
BLM B	Nick Stefanich	801-652-0149	ENGB, ENOP, FAL3, FFT1, ICT5	HEQB		
TNC B	Nathan D. Speagle	217-553-1405	ATVO-ASI, FAL2, FFT1, FFT2, ICT5, UTVO-ASI, WFR	FIRB, ENGB, FEMO		
GWTR B	Austin Williams	828-553-7616	FFT2, UTVO-Fed	FFT2		
TNC B	Sonya Kaufman	202-674-5920	FFT1, FFT2, ICT5	FAL2		
NCP B	Sharon Becker	704-576-1383	FFT1, ICT5	ENGB, FIRB		
TNC B	Danielle Cadin	217-480-5143	ATVO-ASI, FFT2, UTVO-ASI, WFR	FFT1		
NCP B	Igor Galiev	757-944-0128	FAL3, FFT2	FFT1, FAL2		
TNC B	Jessica Donvito	618-521-5133	FFT2			
TNC B	Patrick Ma	301-801-9135	FFT2, FAL3	FAL2, FFT1		
TNC B	Jacob McDaniel	443-223-9652	ATVO-ASI, FAL3, FFT2	FEMO, FFT1		
Studen B	Maya Philipp		FFT2			
TNC C	Katie Sauerbrey	360-601-5681	ATVO-ASI, ENGB, FAL2, FAL3, FFT1, FFT2, FIRB, ICT4, ICT5, RXB2, RXB3, STEN, TFLD			
PaBF C	Gregg Reese	267-372-3256	ATVO-NATL, CRWB, ENGB, ENOP, FAL2, FFT1,			

				FFT2, FIRB, HEQB, ICT4, ICT5, RXB2, STEN, TFLD,	
				UTVO-NATL	
BLM	C	Mike Tateishi	385-910-5841	DIVS, ENGB, ENOP, FAL1, FAL2, FFT1, FIRB, ICT3,	RXB2
				ICT4, ICT5, TFLD, UTVO-FED	
PaBF	C	Thomas R. Ludka	570-881-4730	FAL3, FFT1, FFT2, ICT5	FIRB, CRWB
USFS	C	Dana Hodde		FFT2	
USFS	C	Gregg Philipp		ICT4, TFLD, DIVS	
				FFT2, FIRB, ICT4, ICT5, UTVO-NATL	
TNC	C	Deb Mauer	262-287-8558	ENGB, FFT1, FFT2, FIRB	
NCP	C	Malcom Scott Avis	704-914-5740	FAL2, FAL3, FFT1, FFT2, ICT5	FIRB
USFS	C	Brandon Kuhn		FFT1, ENGB	FIRB
TNC	C	Tyler Cross	215-738-8087	FAL2, FAL3, FEMO, FFT1, FFT2, FIRB, ICT5,	ENGB, ICT4
				UTVO-Other	
NCP	C	Trey Hucks	252-571-4603	FFT2, FAL3	FFT1, ICT5
NCFS	C	Bonnie Kay Weyandt-	254-396-4517	ATVO-Fed, ENGB, ENOP, FAL3, FFT1, FFT2, HEQB,	STEN, FAL2, ICT4
		Morgan		ICT5, UTVO-Fed	
TNC	C	Will Evans	804-928-5920	FFT2, FAL3	FFT1
USFS	C	Jarred Sparks	864-888-7790	FFT2	FFT1
PC	C	Eric Rawlins	226-347-9335	FFT2, FFT1	
USFS	C	Silas Lindsey		FFT2	

NCP NC Parks  
 TNC The Nature Conservancy  
 NPS National Park Service  
 USFS US Forest Service  
 BLM Bureau of Land Management  
 PaBF Pa Bureau of Forestry  
 BFD Bluffton Fire Department  
 GWTR Greenville Watershed  
 NCFS NC Forest Service  
 PC Parks Canada



# HEALTH AND SAFETY MESSAGE

## **SAFETY** starts with **YOU**

INCIDENT: **2023 SBR TREX**

OPERATIONAL PERIOD:

### Fire Order / Watchout Situation of the Day:

Know what your fire is doing at all times.

## **Fuel Handling – Watch Out for “Normalization”**

There is an apprehension that the safety concerns surrounding the use of gasoline in firefighting operations can get “normalized”. In firefighting, we use gasoline for a variety of applications, including pumps, chainsaws, vehicles, drip torches, etc.

“Normalization” of hazards or risks is when we get comfortable around these hazards and take shortcuts without consequence. After a while, we can get so comfortable with these shortcuts that we forget about the original mitigation to reduce the hazard or risk.

1. What do we use gasoline for in our firefighting operations?
2. What risks are associated with our uses of flammable liquids?
3. What mitigations or procedures are in place for handling fuel?
4. What can you do to prevent being sprayed or doused in gasoline from gas tank pressure?
5. What should you do to extinguish someone who is on fire?



**Day of burn injury**



**5 Days after burn injury**

**Your Safety Team**

Brian Plume

Remember Each of **YOU** are Safety officers

# MEDICAL PLAN (ICS 206 WF)

<b>1. Incident/Project Name</b>		<b>2. Operational Period</b>				
<b>2023 SOUTHERN BLUE RIDGE TREX</b>		Date/Time <b>10/04/23 – 11/10/23</b>				
<b>3. Ambulance Services</b>						
<b>Name</b>	<b>Complete Address</b>	<b>Phone</b>	<b>Advanced Life Support (ALS)</b> Yes                      No			
Buncombe County EMS	164 Erwin Hills, Asheville, NC 28806	911 / (828) 250-6600	Yes			
Greenville County EMS	301 University Ridge, Greenville, SC 29601	911 / (864) 467-7005	Yes			
Henderson County EMS	2529 Ashville Highway, Hendersonville, NC	911 / (828) 697-4827	Yes			
Oconee County EMS	300 South Church St, Walhalla, SC 29691	911 / (864) 638-4200	Yes			
Pickens County EMS	1509 Walhalla Hwy, Pickens, SC 29671	911 / (864) 898-5334	Yes			
Polk County EMS	340 Hospital Drive, Columbus, NC 28722	911 / (828) 894-3067	Yes			
Rutherford EMS	339 Callahan Koon Rd, Spindale, NC 28160	911 / (828) 287-6075	Yes			
Transylvania County EMS	155 Public Safety Way, Brevard, NC 28712	911 / (828) 884-3244	Yes			
<b>4. Air Ambulance Services</b>						
<b>Name</b>	<b>Phone</b>	<b>Type of Aircraft &amp; Capability</b>				
MAMA-1 – Asheville, NC	(800) 962-4354	Single Patient – EC145e				
MAMA-2 – Franklin, NC	(800) 962-4354	Single Patient – EC135				
Life Flight – Anderson, SC	(877) 682-7828	Single Patient – Bell 407				
LifeNet SC10 – Greenville, SC	(800) 327-2611	Single Patient – EC135				
Med Trans One – Greenville, SC	(877) 682-7828	Single Patient – Bell 407				
Region One – Spartanburg, SC	(877) 682-7828	Single Patient – Bell 407				
<b>5. Hospitals</b>						
<b>Name</b> <b>Complete Address</b>	<b>GPS Datum – WGS 84</b> <b>Coordinate Standard</b> <b>Degrees Decimal</b> <b>Minutes</b>	<b>Travel Time</b> <b>Air</b> <b>Grnd</b>	<b>Phone</b>	<b>Helipad</b> Yes    No	<b>Level</b> <b>of Care</b> <b>Facility</b>	
Prisma Health Memorial 701 Grove Road Greenville, SC 29605	Lat: 34°49'07.7"N		(864) 455-7000	<input checked="" type="checkbox"/>	<input type="checkbox"/>	Trauma I
	Long: 82°24'46.6"W					
	VHF:					
Spartanburg Medical Center 101 East Wood Street Spartanburg, SC 29303	Lat: 34°58'00.5"N		864-560-6000	<input checked="" type="checkbox"/>	<input type="checkbox"/>	Trauma I
	Long: 81°56'19.3"W					
	VHF:					
Mission Hospital 509 Biltmore Avenue Asheville, NC	Lat: 35°34'36.1"N		828-213-1111	<input checked="" type="checkbox"/>	<input type="checkbox"/>	Trauma II
	Long: 82°32'57.1"W					
	VHF:					
AnMED Medical Center 800 North Fant Street Anderson, SC 29621	Lat: 34°30'38.5"N		864-512-1000	<input checked="" type="checkbox"/>	<input type="checkbox"/>	Trauma III
	Long: 82°38'48.4"W					
	VHF:					
Atrium Health Cleveland 201 East Grover Street Shelby, NC 28150	Lat: 35°18'7.3"N		980-487-3000	<input checked="" type="checkbox"/>	<input type="checkbox"/>	Trauma III
	Long: 81°32'12.6"W					
	VHF:					
<b>6. Name &amp; Location</b>		<b>Camp Location</b>				
<b>TABLE ROCK WESLEYAN CAMP</b>		<b>Point of Contact:</b>		Brian L Plume – (570) 439-3969		
		<b>EMS Responders &amp; Capability:</b>		Pickens County EMS – ALS		
		<b>Equipment Available on Scene:</b>		Brian Plume – AED, Trauma & O2 Kit; Equipment within Modules		
		<b>Medical Emergency Channel:</b>		Glassy Mountain – Piedmont Dispatch		
		<b>ETA for Ambulance to Scene:</b>				
		<b>Air:</b>		+/- 15 min		
		<b>Ground:</b>		+/- 20 min		
		<b>Approved Helispot:</b>		West Gate Road & Bethel Terrace Intersections		
		<b>Lat:</b>		35.02152		
<b>Long:</b>		82.71176				



# MEDICAL PLAN (ICS 206 WF)

1. Incident/Project Name	2. Operational Period	
<b>2023 SOUTHERN BLUE RIDGE TREX</b>	Date/Time <b>10/04/23 – 11/10/23</b>	
6. Division   Branch   Group	Area Location Capability	
<b>HENDERSON CO, NC</b>  Dupont State Forest	<b>EMS Responders &amp; Capability:</b>	Henderson County EMS – ALS
	<b>Equipment Available on Scene:</b> (Identify during briefing)	
	<b>Medical Emergency Channel:</b>	Bear Wallow – District 1 Operations (Dispatch)
	<b>ETA for Ambulance to Scene:</b>	BASED AT HIGH FALLS VISITOR CENTER
	<b>Air:</b>	+/- 30 min
	<b>Ground:</b>	+/- 30 min
	<b>Approved Helispot:</b>	Identify during briefing
	<b>Lat:</b>	
<b>Long:</b>		
<b>GREENVILLE CO, SC</b>  Greenville Watershed	<b>EMS Responders &amp; Capability:</b>	Greenville County EMS – ALS
	<b>Equipment Available on Scene:</b> (Identify during briefing)	
	<b>Medical Emergency Channel:</b>	Gordin Mountain (or Glassy Mountain) – Piedmont Dispatch
	<b>ETA for Ambulance to Scene:</b>	BASED AT LAKE SHELIA
	<b>Air:</b>	+/- 30 min
	<b>Ground:</b>	+/- 1 hour (Henderson County EMS +/- 30 min)
	<b>Approved Helispot:</b>	Identify during briefing
	<b>Lat:</b>	
<b>Long:</b>		
<b>OCONEE CO, SC</b>  Andrew Pickens NF Oconee State Park Poe Creek State Forest	<b>EMS Responders &amp; Capability:</b>	Oconee County EMS – ALS
	<b>Equipment Available on Scene:</b> (Identify during briefing)	
	<b>Medical Emergency Channel:</b>	Long Mountain – Piedmont Dispatch
	<b>ETA for Ambulance to Scene:</b>	BASED AT MOUNTAIN REST
	<b>Air:</b>	+/- 30 min
	<b>Ground:</b>	+/- 15 min
	<b>Approved Helispot:</b>	Identify during briefing
	<b>Lat:</b>	
<b>Long:</b>		
<b>PICKENS CO, SC</b>  Keowee Toxaway State Park Poe Creek State Forest Jocasee Gorges Watson Cooper Heritage Pr Mountain View Park Table Rock State Park	<b>EMS Responders &amp; Capability:</b>	Pickens County EMS – ALS
	<b>Equipment Available on Scene:</b> (Identify during briefing)	
	<b>Medical Emergency Channel:</b>	Glassy Mountain – Piedmont Dispatch
	<b>ETA for Ambulance to Scene:</b>	BASED AT WESLEYAN CAMP
	<b>Air:</b>	+/- 15 min
	<b>Ground:</b>	+/- 20 min
	<b>Approved Helispot:</b>	Identify during briefing
	<b>Lat:</b>	
<b>Long:</b>		
<b>POLK CO, NC</b>  Green River Game Lands	<b>EMS Responders &amp; Capability:</b>	Polk County EMS – ALS
	<b>Equipment Available on Scene:</b> (Identify during briefing)	
	<b>Medical Emergency Channel:</b>	Bear Wallow – District 1 Operations (Dispatch)
	<b>ETA for Ambulance to Scene:</b>	BASED AT SALUDA
	<b>Air:</b>	+/- 30 min
	<b>Ground:</b>	+/- 15 min
	<b>Approved Helispot:</b>	Identify during briefing
	<b>Lat:</b>	
<b>Long:</b>		

# MEDICAL PLAN (ICS 206 WF)

1. Incident/Project Name		2. Operational Period	
2023 SOUTHERN BLUE RIDGE TREX		Date/Time <b>10/04/23 – 11/10/23</b>	
6. Division   Branch   Group		Area Location Capability	
<b>RUTHERFORD CO, NC</b>  Chimney Rock State Park	<b>EMS Responders &amp; Capability:</b>		<b>Rutherford County EMS – ALS</b>
	<b>Equipment Available on Scene:</b> (Identify during briefing)		
	<b>Medical Emergency Channel:</b>		<b>Chimney Rock – District 1 Operations (Dispatch)</b>
	<b>ETA for Ambulance to Scene:</b>		<b>BASED AT CHIMNEY ROCK (village)</b>
	<b>Air:</b>		<b>+/- 20 min</b>
	<b>Ground:</b>		<b>+/- 40 min (Polk County EMS +/- 30 min)</b>
	<b>Approved Helispot:</b>		<b>Identify during briefing</b>
	<b>Lat:</b>		
<b>Long:</b>			
<b>TRANSYLVANIA CO, NC</b>  DuPont State Forest Headwaters State Forest Gorges SP	<b>EMS Responders &amp; Capability:</b>		<b>Transylvania County EMS – ALS</b>
	<b>Equipment Available on Scene:</b> (Identify during briefing)		
	<b>Medical Emergency Channel:</b>		<b>Bear Wallow (or Rich) – District 1 Operations (Dispatch)</b>
	<b>ETA for Ambulance to Scene:</b>		<b>BASED AT BREVARD</b>
	<b>Air:</b>		<b>+/- 30 min</b>
	<b>Ground:</b>		<b>+/- 15 min</b>
	<b>Approved Helispot:</b>		<b>Identify during briefing</b>
	<b>Lat:</b>		
<b>Long:</b>			
<b>BUNCOMBE CO, NC</b>  Sandy Mush Game Lands	<b>EMS Responders &amp; Capability:</b>		<b>Buncombe County EMS – ALS</b>
	<b>Equipment Available on Scene:</b> (Identify during briefing)		
	<b>Medical Emergency Channel:</b>		<b>– District 1 Operations (Dispatch)</b>
	<b>ETA for Ambulance to Scene:</b>		<b>BASED AT Leicester VFD</b>
	<b>Air:</b>		<b>+/- 20 min</b>
	<b>Ground:</b>		<b>+/- 15 min</b>
	<b>Approved Helispot:</b>		<b>Identify during briefing</b>
	<b>Lat:</b>		
<b>Long:</b>			
<b>SPECIAL INSTRUCTIONS:</b>			
<input type="checkbox"/> <b>Identify the medical using the Medical Incident Report, ICS-206 (Medical Plan) &amp; IRPG</b>			
<input type="checkbox"/> <b>GREEN:</b>			
<input type="checkbox"/> Notify Module Leader.			
<input type="checkbox"/> Temporarily pause operations as needed to treat the injury.			
<input type="checkbox"/> If the participant can continue re-evaluate as needed. Notify SAFETY when possible (can be at end of shift).			
<input type="checkbox"/> If they cannot continue or need clinic follow-up notify Safety and Operations.			
<input type="checkbox"/> Resume operations when medical has been cleared and if required staffing is maintained.			
<input type="checkbox"/> Submit copy of all documentation (notes, MIR, etc) to Plans.			
<input type="checkbox"/> <b>YELLOW OR RED:</b>			
<input type="checkbox"/> Notify Module Leader IMMEDIATELY.			
<input type="checkbox"/> Pause operations maintaining safety of active fire.			
<input type="checkbox"/> Notify 911.			
<input type="checkbox"/> Begin patient treatment / stabilization.			
<input type="checkbox"/> Notify an IMT C&G member. The IMT member will make follow up notifications. Call order: Safety, Operations, Logistics, IC			
<input type="checkbox"/> Resume operations when medical has been cleared <b>and</b> if required staffing is maintained <b>and</b> participants are able to mentally and is cleared by the IC.			
<input type="checkbox"/> Submit copy of all documentation (notes, MIR, etc) to Plans.			
<input type="checkbox"/> <b>In Camp or off-duty hours use the above as a framework but understand the situation.</b>			
<input type="checkbox"/> <b>The bottom line is to get the patient treated without delay!</b>			
6. Prepared By (Medical Unit Leader)		7. Date/Time	
Click here to enter text.		Click here to enter text.	
8. Reviewed By (Safety Officer)		9. Date/Time	
Click here to enter text.		Click here to enter text.	

# MEDICAL PLAN (ICS 206 WF)

## Medical Incident Report

**FOR ALL MEDICAL EMERGENCIES: IDENTIFY ON SCENE INCIDENT COMMANDER BY NAME AND POSITION AND ANNOUNCE "MEDICAL EMERGENCY" TO INITIATE RESPONSE FROM IMT COMMUNICATIONS/DISPATCH.**

**Use items one through nine to communicate situation to communications/dispatch.**

**1. CONTACT COMMUNICATIONS/DISPATCH**

*Ex: "Communications, Div. Alpha. Stand-by for Priority Medical Incident Report." (If life threatening request designated frequency be cleared for emergency traffic.)*

**2. INCIDENT STATUS:** Provide incident summary and command structure.

<b>Nature of Injury/Illness</b>		<i>Describe the injury (Ex: Broken leg with bleeding)</i>
Incident Name		<i>Geographic Name + "Medical" (Ex: Trout Meadow Medical)</i>
Incident Commander		<i>Name of IC</i>
Patient Care		<i>Name of Care Provider (Ex: EMT Smith)</i>

**3. INITIAL PATIENT ASSESSMENT:** Complete this section for each patient. This is only a brief, initial assessment. Provide additional patient info after completing this 9 Line Report.

Number of Patients:	Male / Female	Age:	Weight:
Conscious? <input type="checkbox"/> YES <input type="checkbox"/> <b>NO = MEDEVAC!</b>			
Breathing? <input type="checkbox"/> YES <input type="checkbox"/> <b>NO = MEDEVAC!</b>			
Mechanism of Injury: <i>What caused the injury?</i>			
Lat/Long (Datum WGS84) <i>Ex: N 40° 42.45' x W 123° 03.24'</i>			

**4. SEVERITY OF EMERGENCY, TRANSPORT PRIORITY**

SEVERITY	TRANSPORT PRIORITY
<input type="checkbox"/> <b>URGENT-RED Life threatening injury or illness.</b> <i>Ex: Unconscious, difficulty breathing, bleeding severely, 2° – 3° burns more than 4 palm sizes, heat stroke, disoriented.</i>	Ambulance or MEDEVAC helicopter. Evacuation need is <b>IMMEDIATE.</b>
<input type="checkbox"/> <b>PRIORITY-YELLOW Serious Injury or illness.</b> <i>Ex: Significant trauma, not able to walk, 2° – 3° burns not more than 1-2 palm sizes.</i>	Ambulance or consider air transport if at remote location. Evacuation may be <b>DELAYED.</b>
<input type="checkbox"/> <b>ROUTINE-GREEN</b> Not a life threatening injury or illness. <i>Ex: Sprains, strains, minor heat-related illness.</i>	Non-Emergency. Evacuation considered <b>Routine of Convenience.</b>

**5. TRANSPORT PLAN:**

**Air Transport:** (Agency Aircraft Preferred)

<input type="checkbox"/> Helispot	<input type="checkbox"/> Short-haul/Hoist	<input type="checkbox"/> Life Flight	<input type="checkbox"/> Other
-----------------------------------	---	--------------------------------------	--------------------------------

**Ground Transport:** [Click here to enter text.](#)

<input type="checkbox"/> Self-Extract	<input type="checkbox"/> Carry-Out	<input type="checkbox"/> Ambulance	<input type="checkbox"/> Other
---------------------------------------	------------------------------------	------------------------------------	--------------------------------

**6. ADDITIONAL RESOURCE/EQUIPMENT NEEDS:**

<input type="checkbox"/> Paramedic/EMT(s)	<input type="checkbox"/> Crew(s)	<input type="checkbox"/> SKED/Backboard/C-Collar
<input type="checkbox"/> Burn Sheet(s)	<input type="checkbox"/> Oxygen	<input type="checkbox"/> Trauma Bag
<input type="checkbox"/> Medication(s)	<input type="checkbox"/> IV/Fluid(s)	<input type="checkbox"/> Cardiac Monitor/AED
<input type="checkbox"/> Other (i.e. splints, rope rescue, wheeled litter)		

**7. COMMUNICATIONS:**

Function	Channel Name/Number	Receive (Rx)	Tone/NAC *	Transmit (Tx)	Tone/NAC *
<i>Ex: Command</i>	<i>Forest Rpt, Ch. 2</i>	<i>168.3250</i>	<i>110.9</i>	<i>171.4325</i>	<i>110.9</i>
COMMAND					
AIR-TO-GRND					
TACTICAL					

\*(NAC for digital radio system)

**8. EVACUATION LOCATION:**

Lat/Long (Datum WGS84) <i>EX: N 40 42.45' x W 123 03.24'</i>	
Patient's ETA to Evacuation Location:	
Helispot/Extraction Size and Hazards:	

**Considerations:** If primary options fail, what actions can be implemented in conjunction with primary evacuation method? Be thinking ahead...

**REMEMBER:** Confirm ETA's of resources ordered  
Act according to your level of training  
**Be Alert. Keep Calm. Think Clearly. Act Decisively.**

IAP



SBR Focus Map



Burn Unit



# QR CODE PAGE

Mod B Photo



Mod A Photo



Mod C Photo



IMT Photo

## DAILY MEETING AND MEAL SCHEDULE

0700 – Breakfast

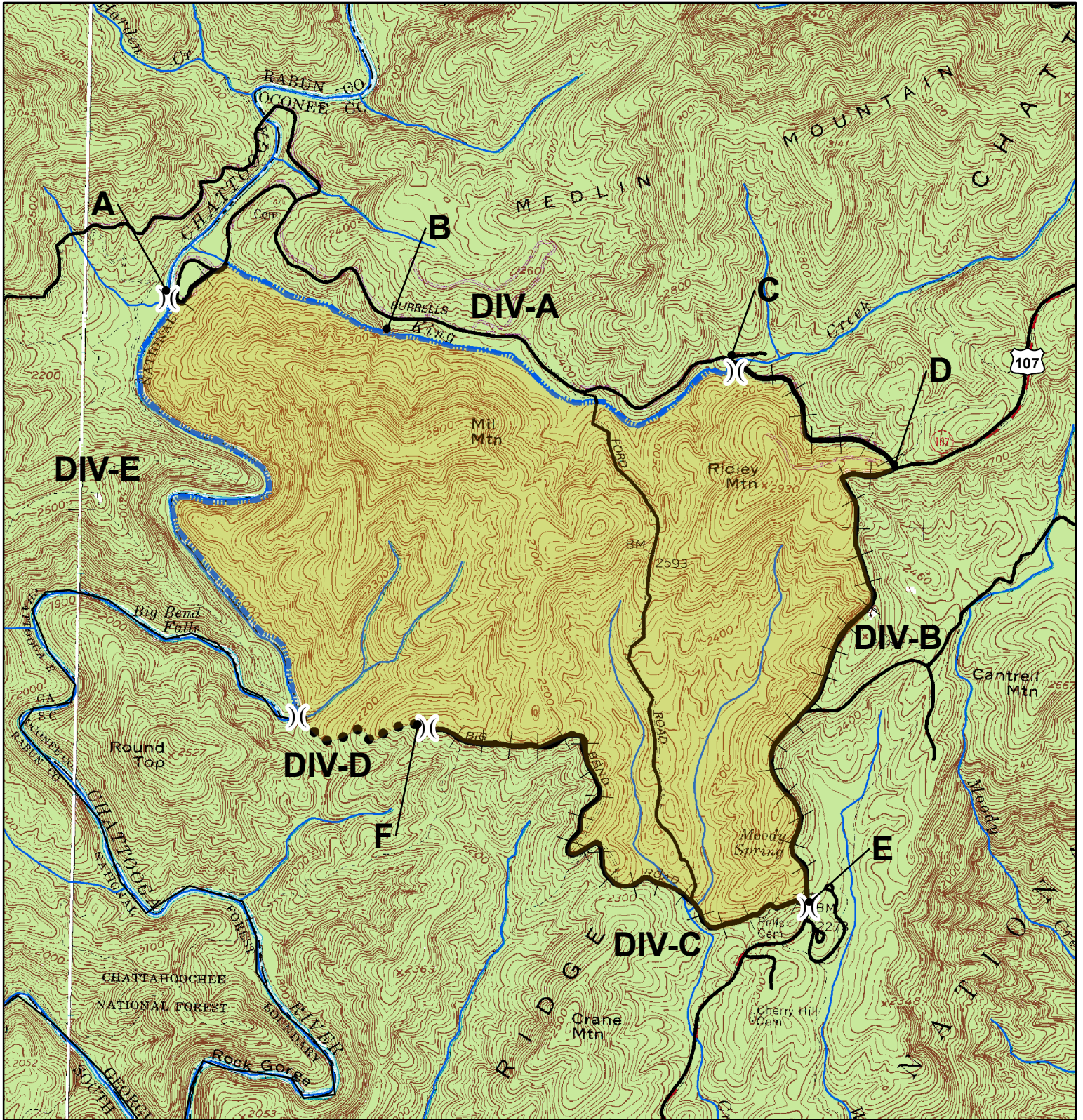
0745 – 0815 – Operational Briefing, All Resources

0830 – 0915 – C&G Staff meeting  
IC, LSC, PSC, OSC, PIO, SOFR, AREP's

1830 – Dinner

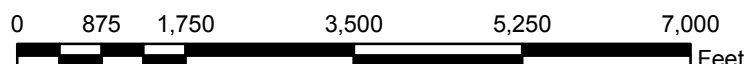
1900 – 1930 – Planning, Strategy and Tactics Meeting  
IC, LSC, PSC, OSC, PIO, SOFR, AREP's

# Burn Block ID: Ridley Divisions



**Legend**

- Ridley Mtn. Unit
- Road
- Structure
- Private
- National Forest
- Road\_as\_ControlLine
- Stream As Control Line
- Division\_Break
- Hand Constructed Line



1 inch = 2,000 feet



Sumter National Forest  
 Andrew Pickens RD  
 Compartments: 7, 10  
 Acres: 1450



