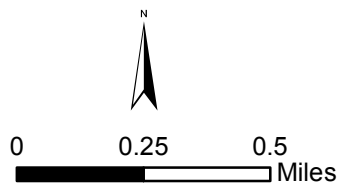
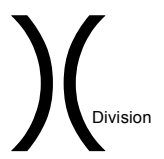
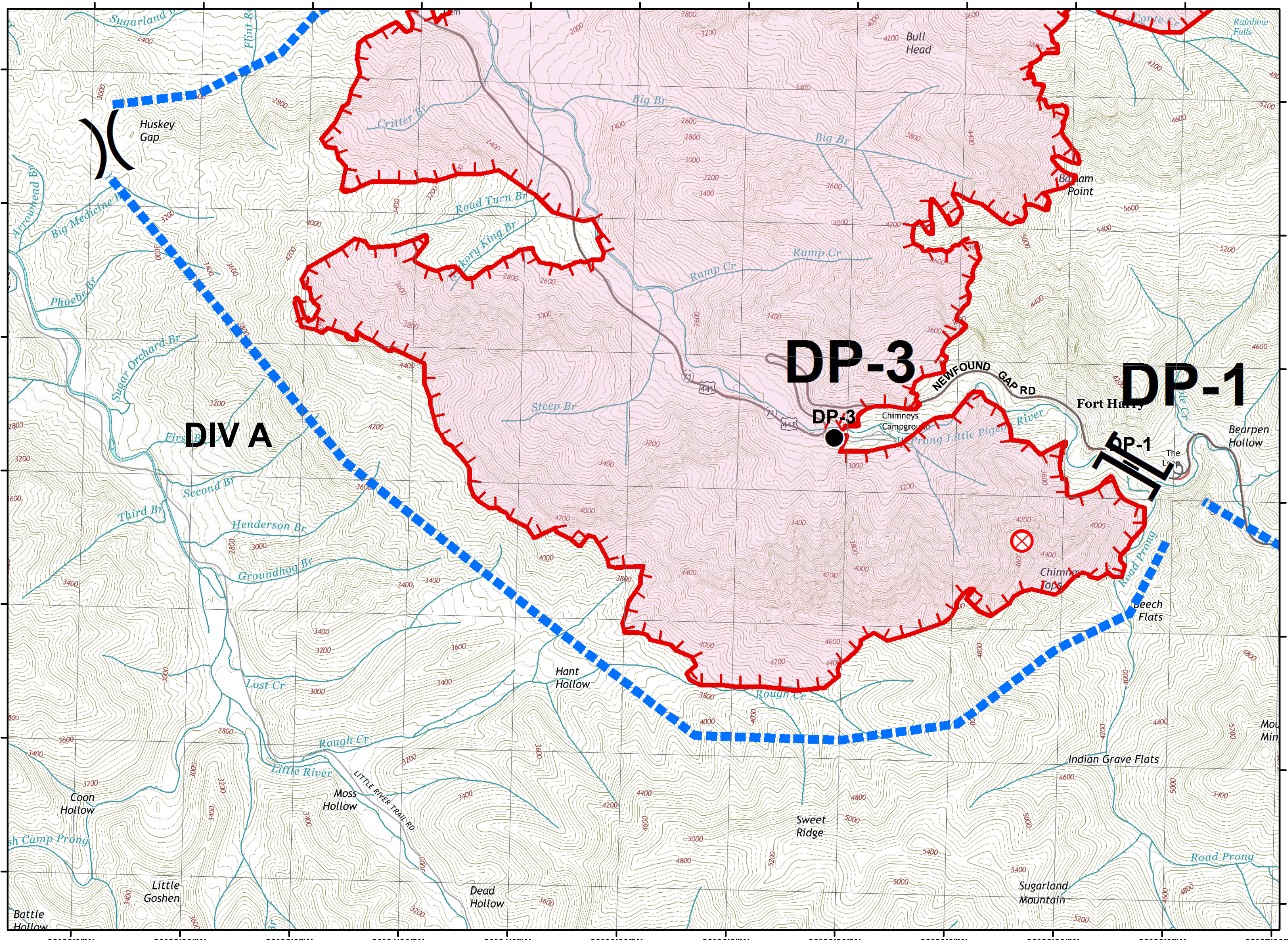
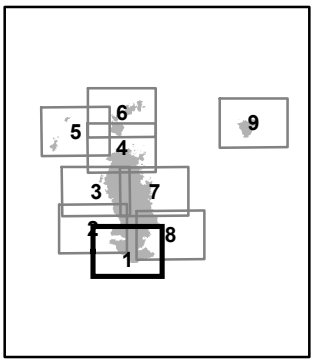


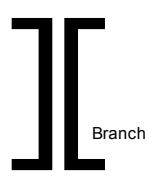
**Chimney Tops 2 Fire
IAP Map
Dec. 4, 2016 Day Shift**



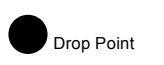
Tile 1



Division



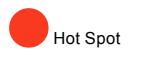
Branch



Drop Point



Fire Origin



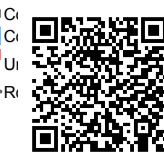
Hot Spot



Incident Command Post



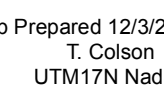
Co



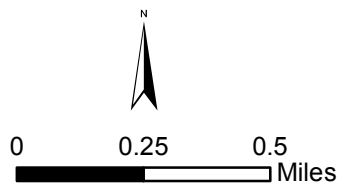
C

U

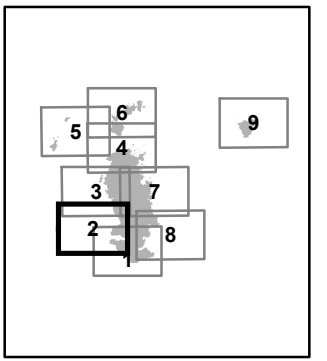
R



**Chimney Tops 2 Fire
IAP Map
Dec. 4, 2016 Day Shift**

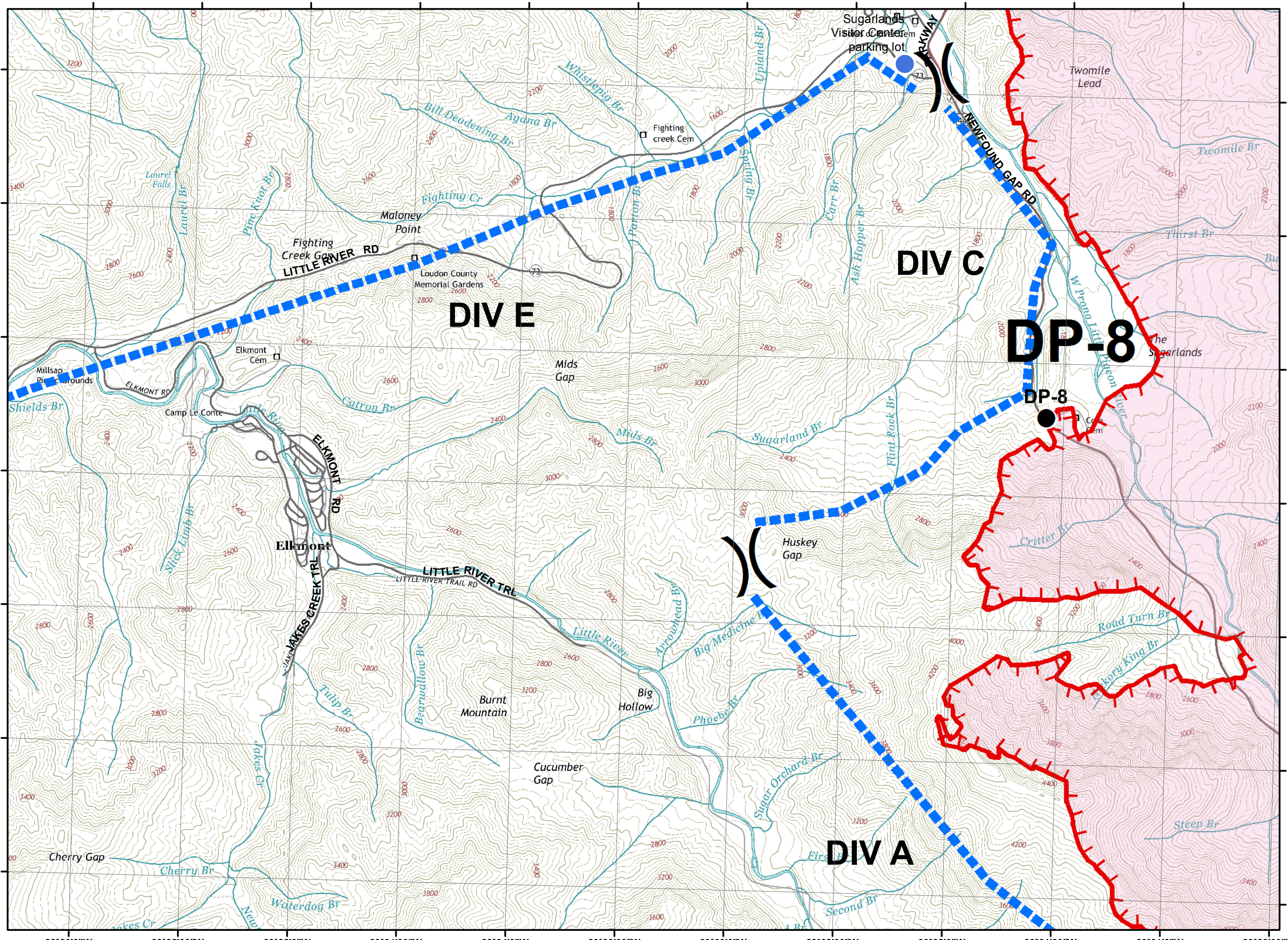


Tile 2

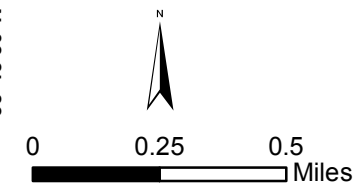


- GSMNP Helicopter LZ
- Division
- Drop Point
- Fire Origin
- Hot Spot
- Incident Command Post
- Park HQ

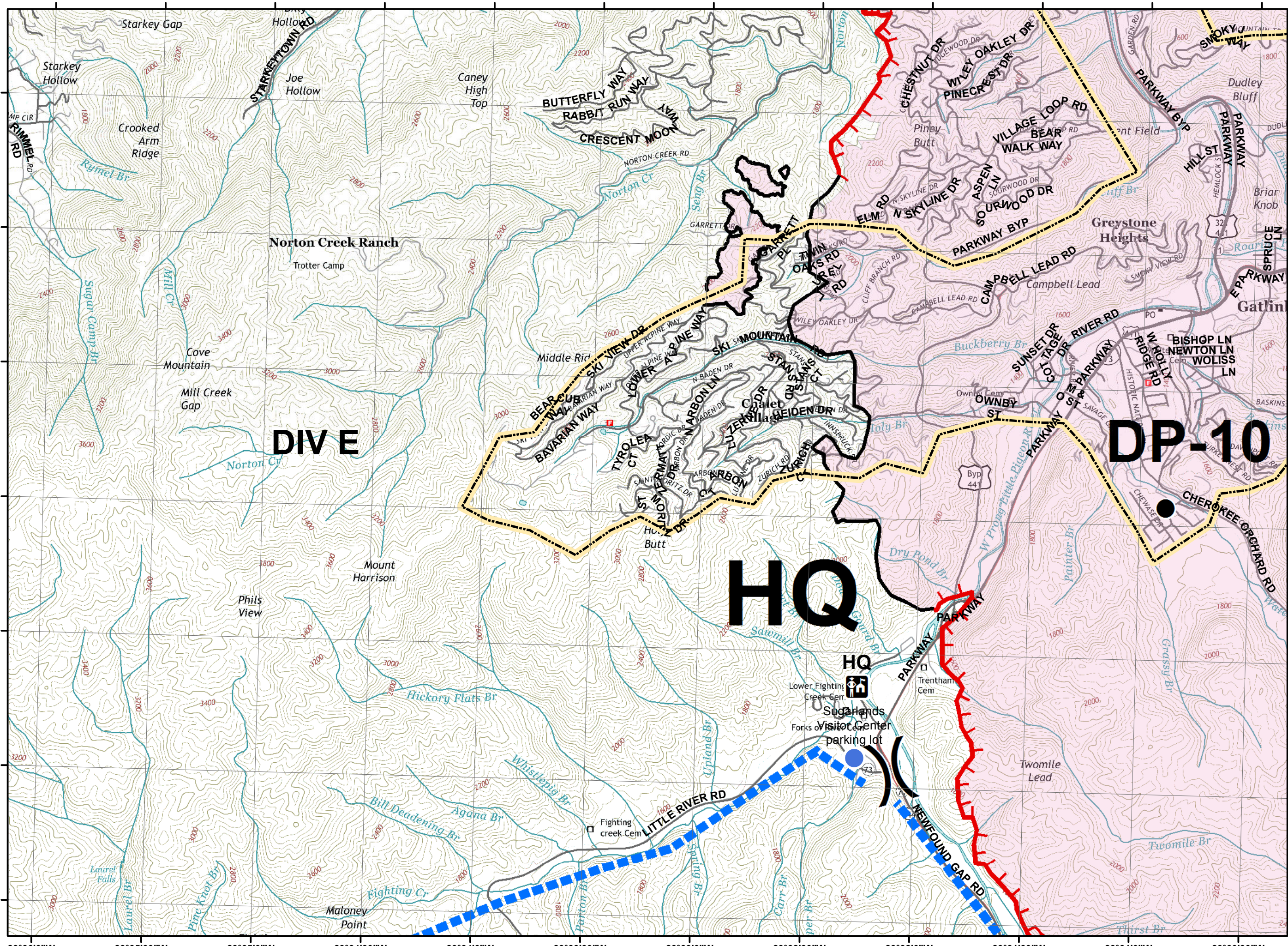
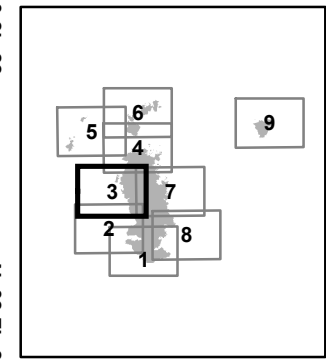
- Completed Dozer Line
- Completed Line
- Co
- Un
- Ro

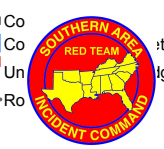
**Chimney Tops 2 Fire
IAP Map
Dec. 4, 2016 Day Shift**



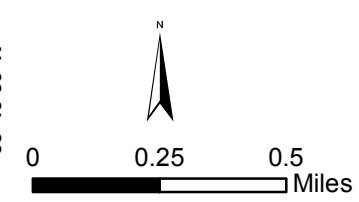
Tile 3



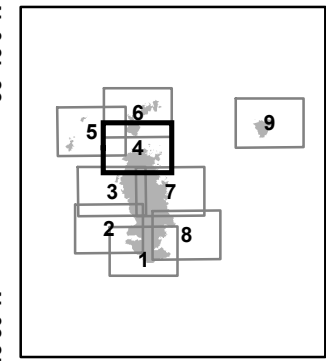
- GSMNP Helicopter LZ
- Municipal Boundaries
- Division
- Drop Point
- Fire Origin
- Hot Spot
- Incident Command Post
- Park HQ
- Completed Dozer Line
- Co
- Co
- Un
- Ro



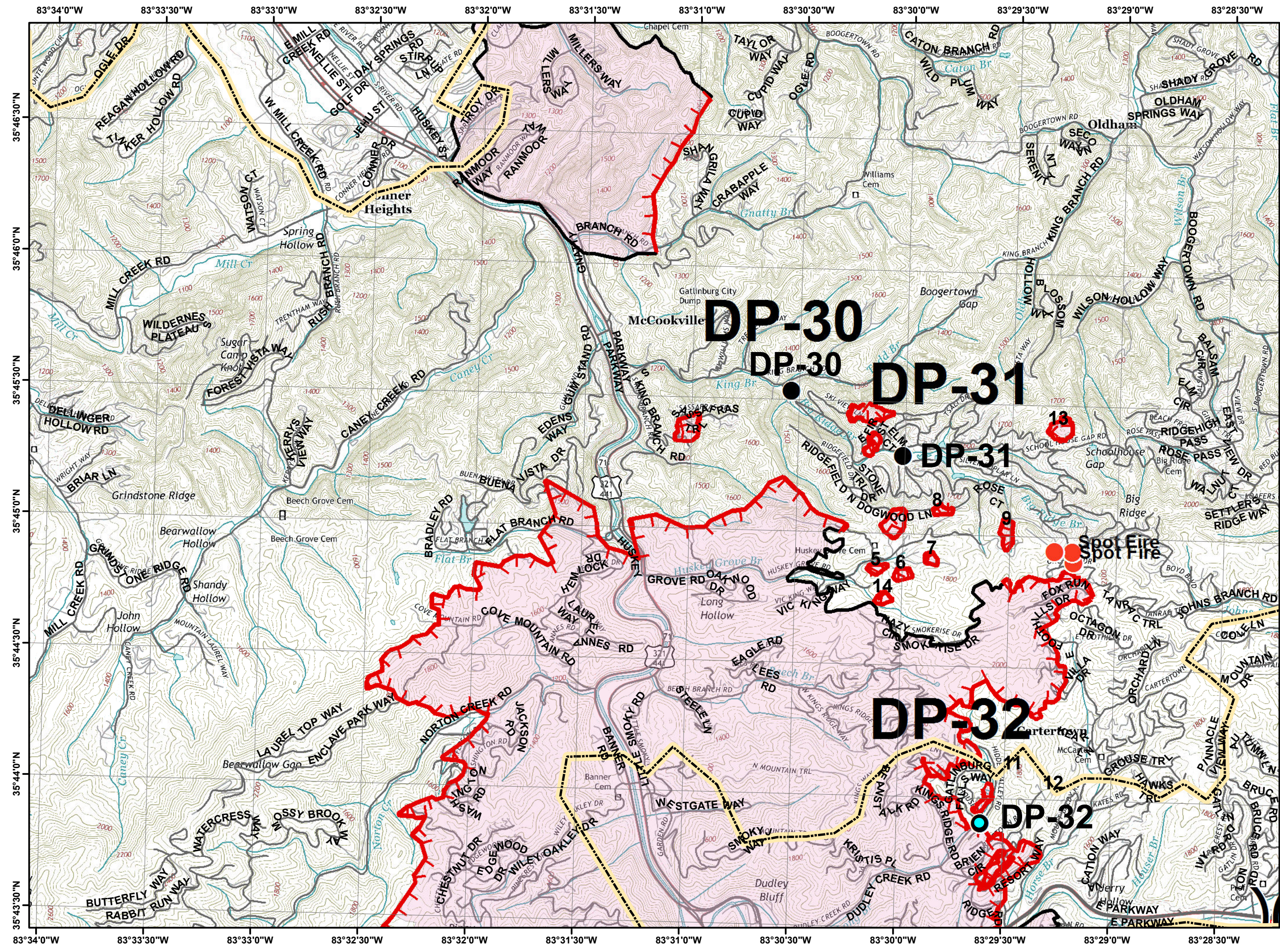
**Chimney Tops 2 Fire
IAP Map
Dec. 4, 2016 Day Shift**

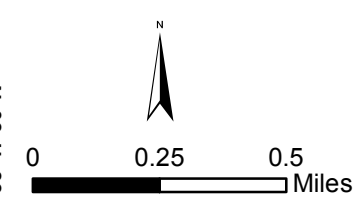


Tile 4

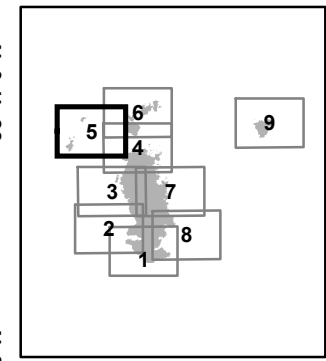


- Municipal Boundaries
- Division
- Drop Point
- Fire Origin
- Hot Spot
- Incident Command Post
- Park HQ
- Completed Dozer Line
- Completed Line
- Containment Perimeter
- Uncontrolled Fire Edge
- Road

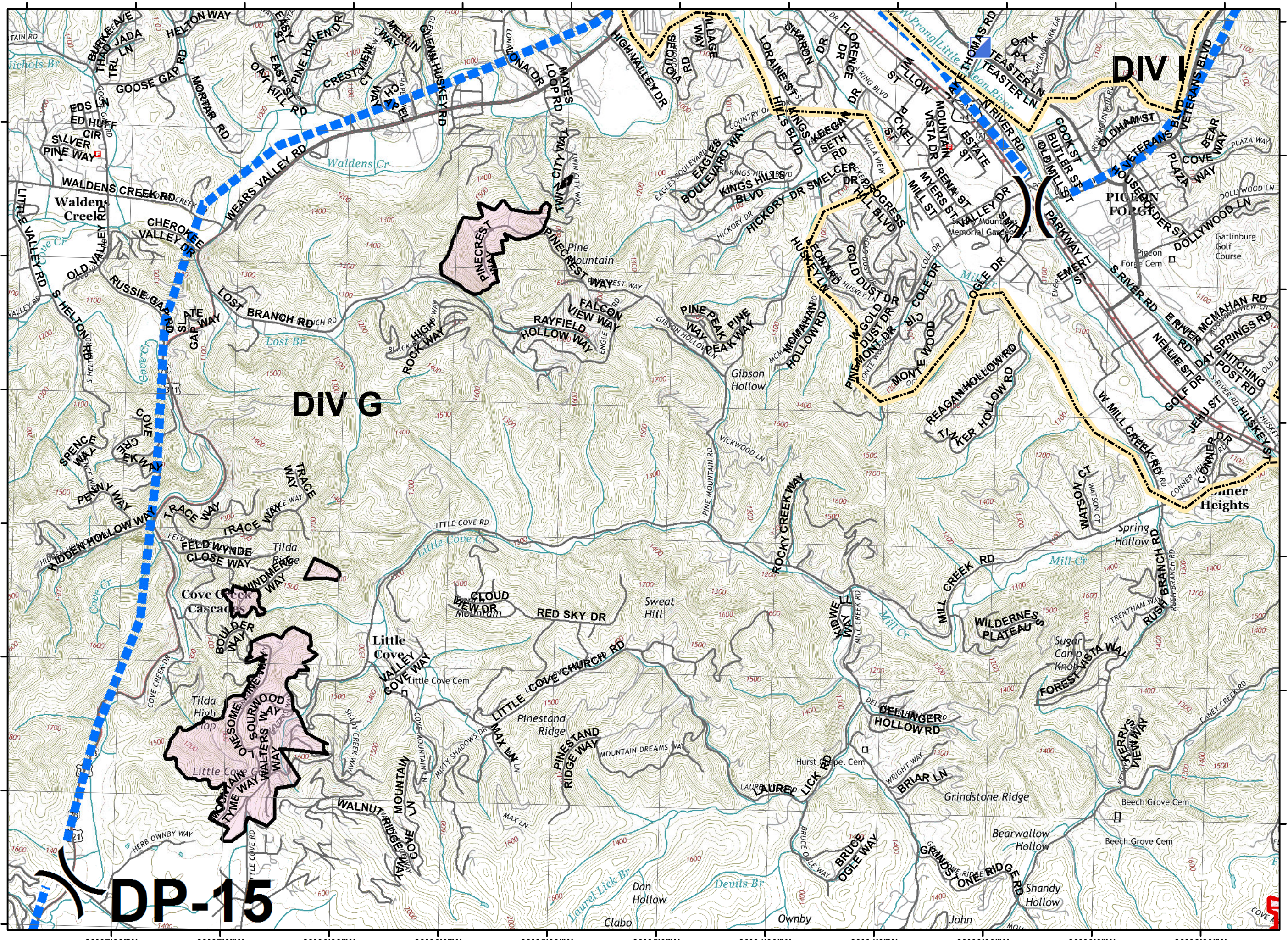




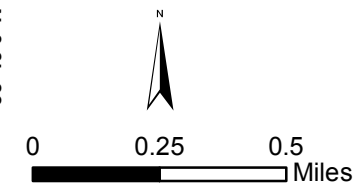
Tile 5



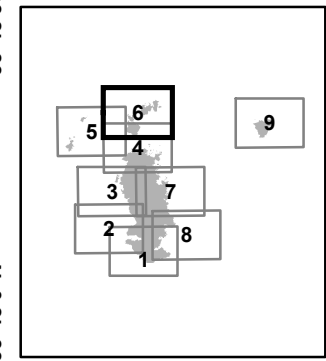
- Municipal Boundaries
- Division
- Drop Point
- Fire Origin
- Hot Spot
- Incident Command Post
- Park HQ
- Completed Dozer Line
- Completed Line
- Containment Perimeter
- Uncontrolled Fire Edge
- Road



**Chimney Tops 2 Fire
IAP Map
Dec. 4, 2016 Day Shift**

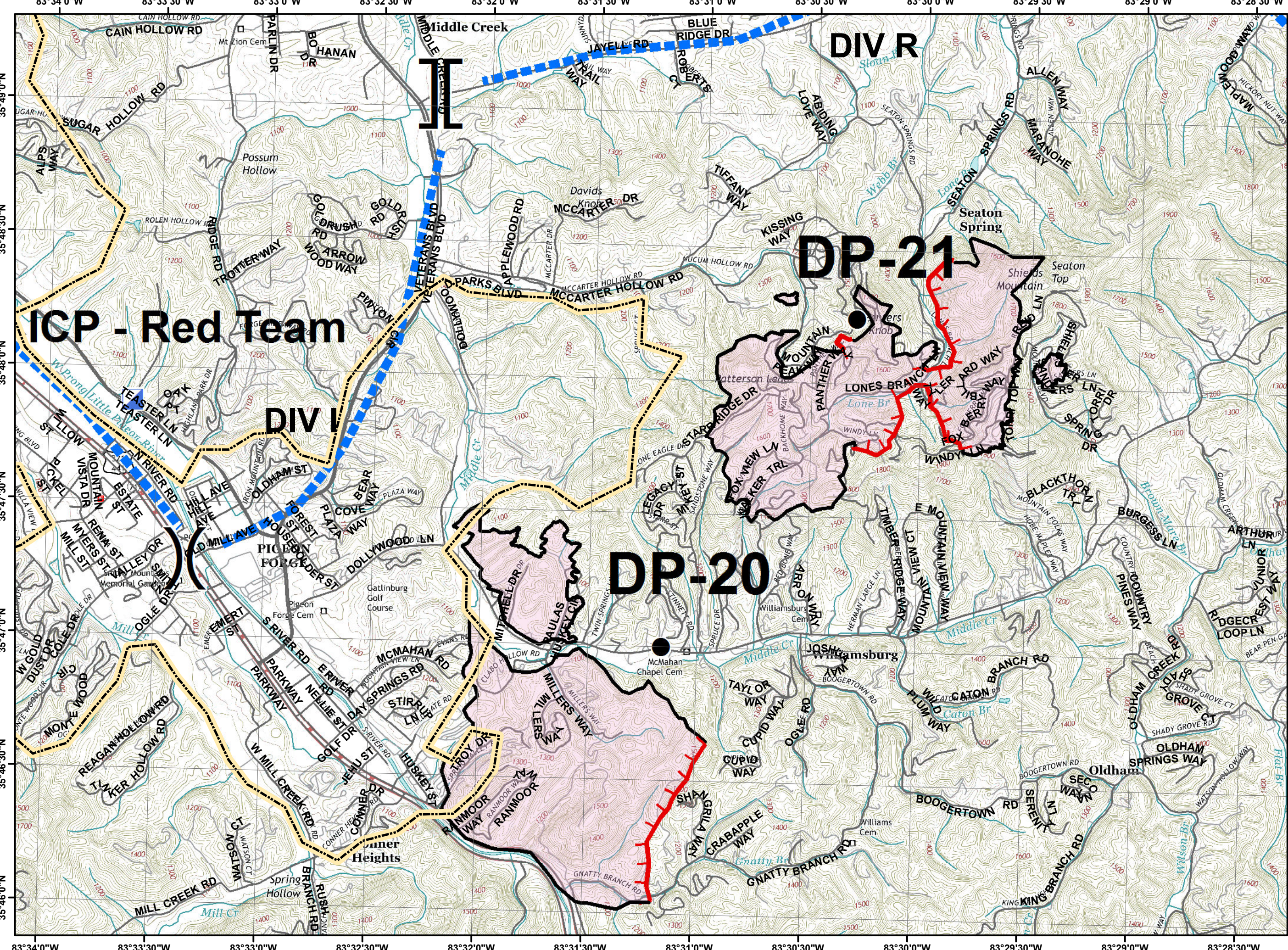


Tile 6

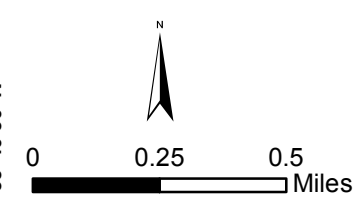


- Municipal Boundaries
- Division
- Branch
- Drop Point
- Fire Origin
- Hot Spot
- Incident Command Post
- SOUTHERN AREA RED TEAM INCIDENT COMMAND
- Communication Line
- C, U, R

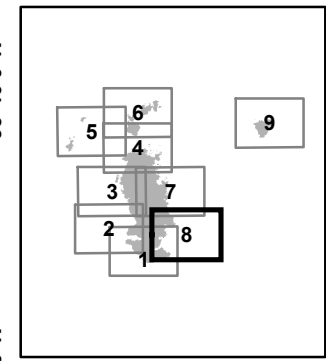
Map Prepared 12/3/2016 2117
T. Colson
UTM17N Nad83



**Chimney Tops 2 Fire
IAP Map
Dec. 4, 2016 Day Shift**

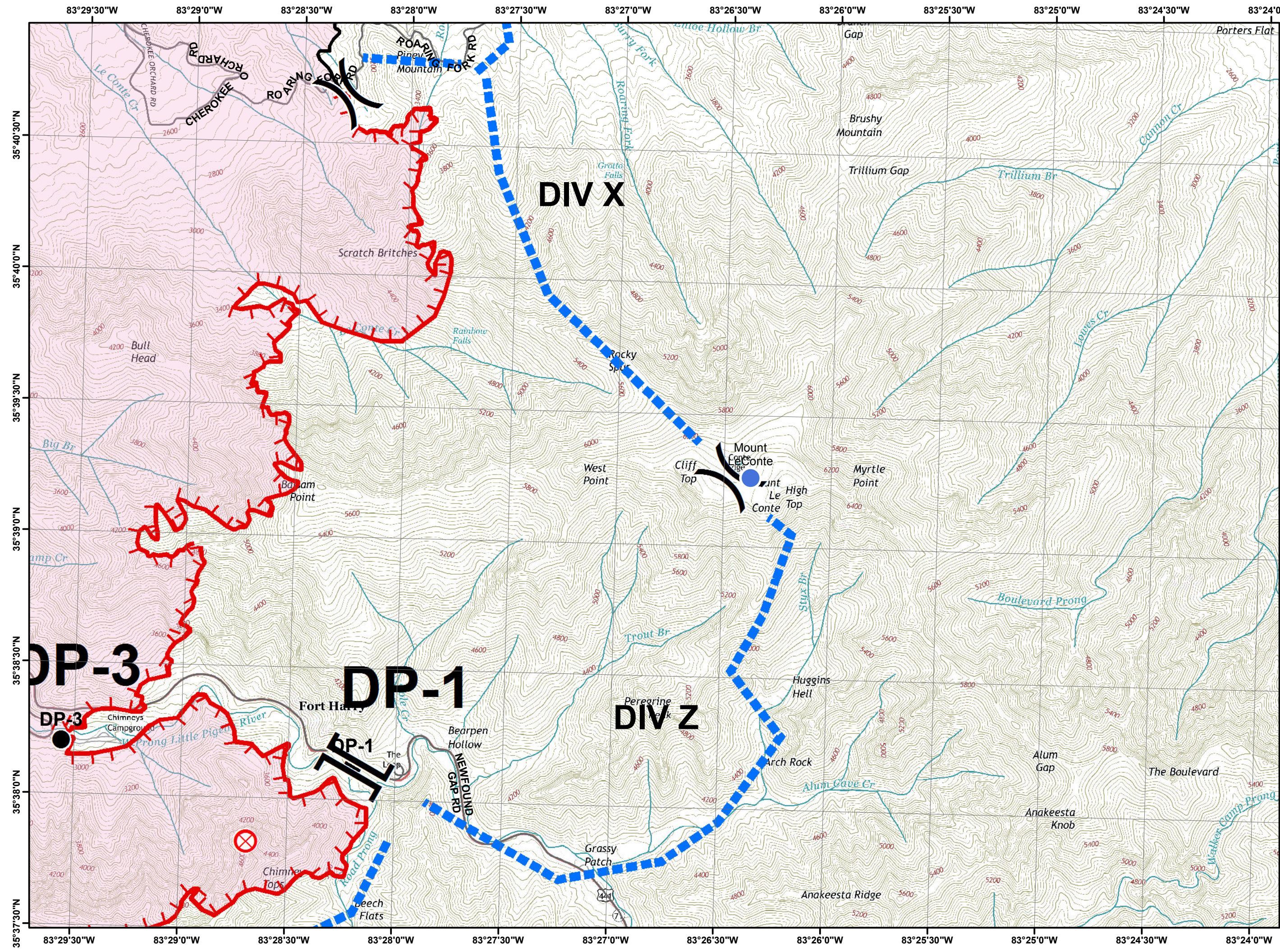


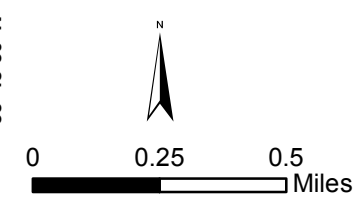
Tile 8



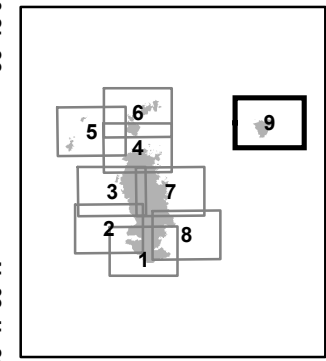
- GSMNP Helicopter LZ
- Division
- Branch
- Drop Point
- Fire Origin
- Hot Spot
- Incident Command
- Incident Command
- QR Code
- Contour
- Division Boundary
- Branch Boundary
- Road

Map Prepared 12/3/2016 2117
T. Colson
UTM17N Nad83





Tile Cobby Nob



- Municipal Boundaries
 - Division
 - Drop Point
 - Fire Origin
 - Hot Spot
 - Incident Command Post
 - Park HQ
 - Completed Dozer Line
 - Completed Line
 - Containment Perimeter
 - Uncontrolled Fire Edge
 - Ro
- 
- 

