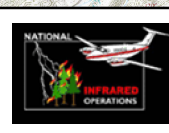
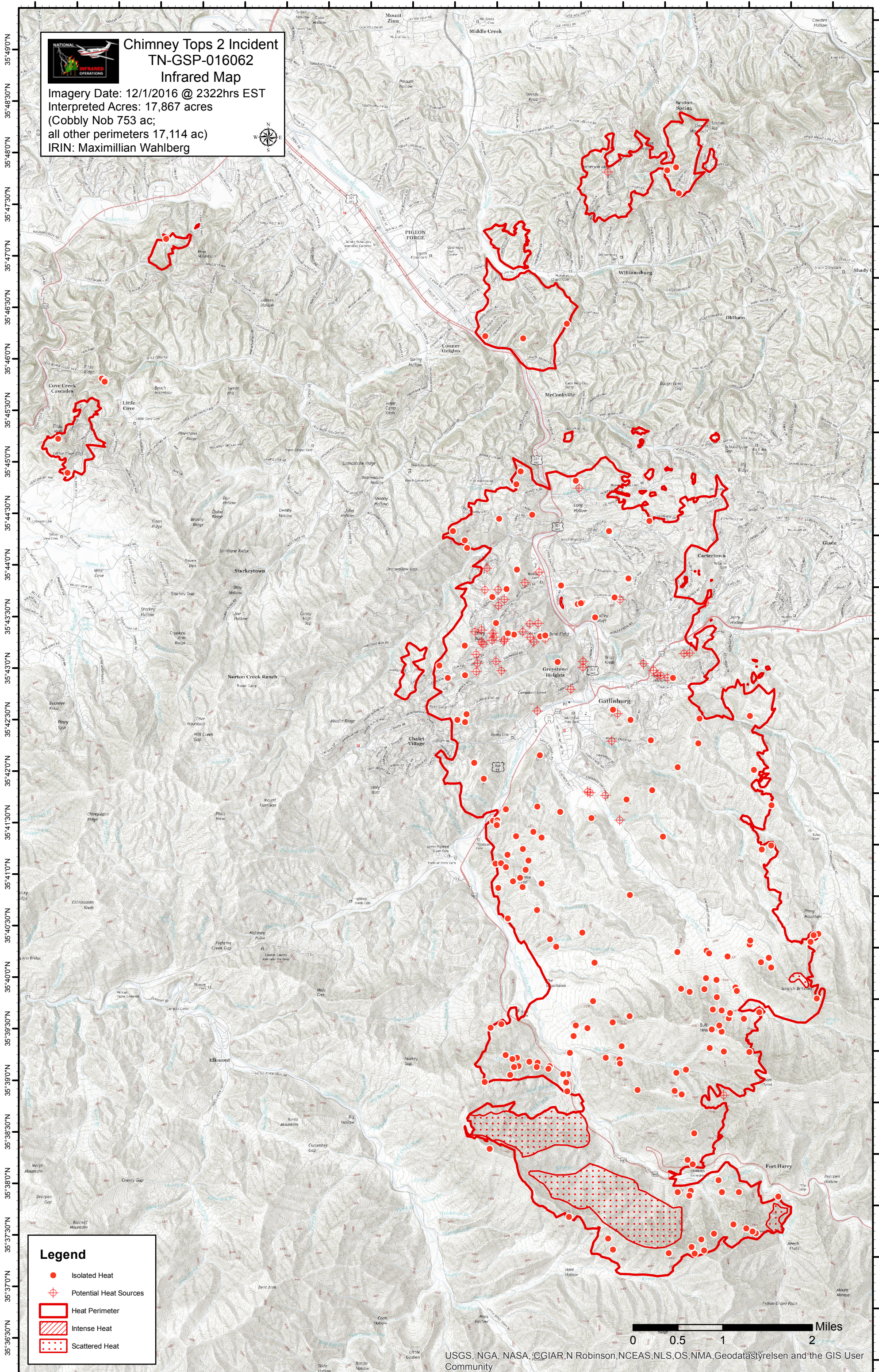


83°37'30"W 83°37'0"W 83°36'30"W 83°36'0"W 83°35'30"W 83°35'0"W 83°34'30"W 83°34'0"W 83°33'30"W 83°33'0"W 83°32'30"W 83°32'0"W 83°31'30"W 83°31'0"W 83°30'30"W 83°30'0"W 83°29'30"W 83°29'0"W 83°28'30"W 83°28'0"W



Chimney Tops 2 Incident
TN-GSP-016062
Infrared Map
Imagery Date: 12/1/2016 @ 2322hrs EST
Interpreted Acres: 17,867 acres
(Cobbly Nob 753 ac;
all other perimeters 17,114 ac)
IRIN: Maximillian Wahlberg



Legend

- Isolated Heat
- ⊕ Potential Heat Sources
- Heat Perimeter
- Intense Heat
- Scattered Heat

0 0.5 1 2 Miles

USGS, NGA, NASA, CGIAR, N Robinson, NCEAS, NLS, OS, NMA, GeodataSy, relsen and the GIS User Community

83°37'0"W 83°36'30"W 83°36'0"W 83°35'30"W 83°35'0"W 83°34'30"W 83°34'0"W 83°33'30"W 83°33'0"W 83°32'30"W 83°32'0"W 83°31'30"W 83°31'0"W 83°30'30"W 83°30'0"W 83°29'30"W 83°29'0"W 83°28'30"W 83°28'0"W 83°27'30"W

35°49'0"N
35°48'30"N
35°48'0"N
35°47'30"N
35°47'0"N
35°46'30"N
35°46'0"N
35°45'30"N
35°45'0"N
35°44'30"N
35°44'0"N
35°43'30"N
35°43'0"N
35°42'30"N
35°42'0"N
35°41'30"N
35°41'0"N
35°40'30"N
35°40'0"N
35°39'30"N
35°39'0"N
35°38'30"N
35°38'0"N
35°37'30"N
35°37'0"N
35°36'30"N

35°49'30"N
35°49'0"N
35°48'30"N
35°48'0"N
35°47'30"N
35°47'0"N
35°46'30"N
35°46'0"N
35°45'30"N
35°45'0"N
35°44'30"N
35°44'0"N
35°43'30"N
35°43'0"N
35°42'30"N
35°42'0"N
35°41'30"N
35°41'0"N
35°40'30"N
35°40'0"N
35°39'30"N
35°39'0"N
35°38'30"N
35°38'0"N
35°37'30"N
35°37'0"N
35°36'30"N