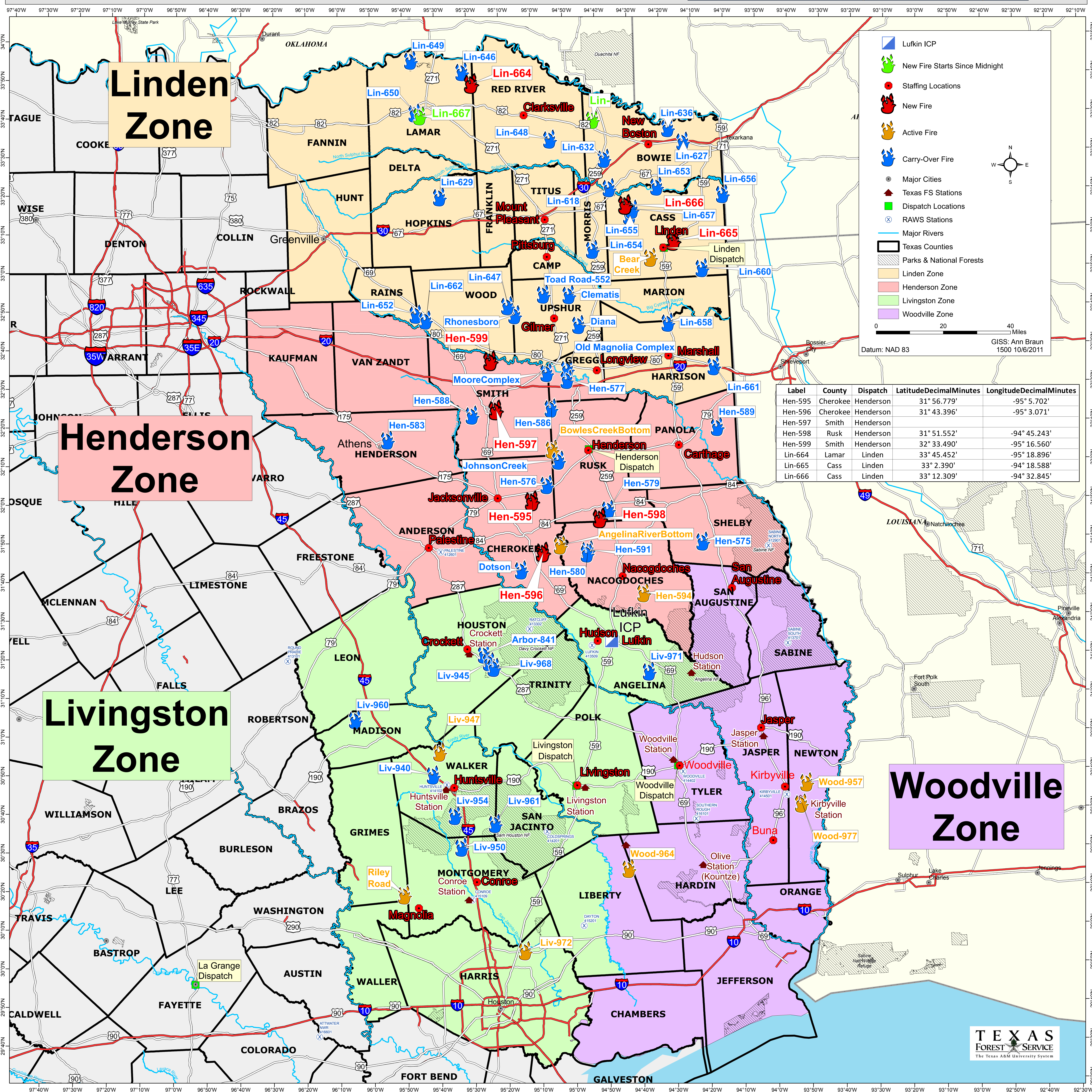


# Southeast Texas Fire Complex TX-TXS-012009

**PLANNING MAP**  
 FIRE ACTIVITY ON OCTOBER 5, 2011  
 AND OCTOBER 6, (UP TO 1500 HRS)



**Linden Zone**

**Henderson Zone**

**Livingston Zone**

**Woodville Zone**

**Legend**

- Lufkin ICP
- New Fire Starts Since Midnight
- Staffing Locations
- New Fire
- Active Fire
- Carry-Over Fire
- Major Cities
- Texas FS Stations
- Dispatch Locations
- RAWS Stations
- Major Rivers
- Texas Counties
- Parks & National Forests
- Linden Zone
- Henderson Zone
- Livingston Zone
- Woodville Zone

Datum: NAD 83  
 GISS: Ann Braun  
 1500 10/6/2011

Label	County	Dispatch	LatitudeDecimalMinutes	LongitudeDecimalMinutes
Hen-595	Cherokee	Henderson	31° 56.779'	-95° 5.702'
Hen-596	Cherokee	Henderson	31° 43.396'	-95° 3.071'
Hen-597	Smith	Henderson		
Hen-598	Rusk	Henderson	31° 51.552'	-94° 45.243'
Hen-599	Smith	Henderson	32° 33.490'	-95° 16.560'
Lin-664	Lamar	Linden	33° 45.452'	-95° 18.896'
Lin-665	Cass	Linden	33° 2.390'	-94° 18.588'
Lin-666	Cass	Linden	33° 12.309'	-94° 32.845'