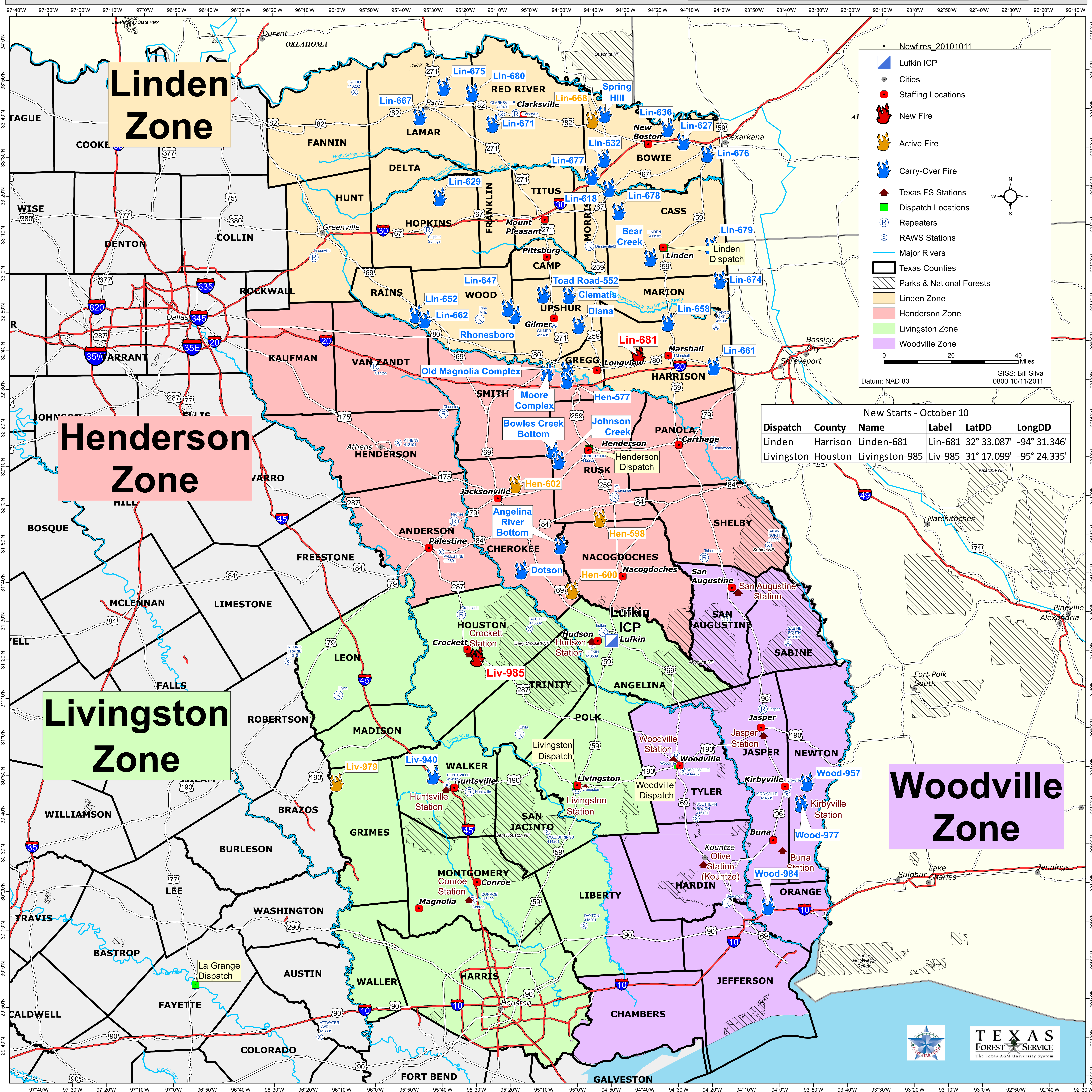


Southeast Texas Fire Complex TX-TXS-012009

BRIEFING MAP FIRE ACTIVITY ON OCTOBER 10, 2011



**Linden
Zone**

**Henderson
Zone**

**Livingston
Zone**

**Woodville
Zone**

Newfires_20101011

- Lufkin ICP
- Cities
- Staffing Locations
- New Fire
- Active Fire
- Carry-Over Fire
- ▲ Texas FS Stations
- Dispatch Locations
- R Repeaters
- X RAWs Stations
- Major Rivers
- Texas Counties
- Parks & National Forests
- Linden Zone
- Henderson Zone
- Livingston Zone
- Woodville Zone

0 20 40 Miles

Datum: NAD 83
GIS: Bill Silva
0800 10/11/2011

New Starts - October 10

| Dispatch | County | Name | Label | LatDD | LongDD |
|------------|----------|----------------|---------|-------------|--------------|
| Linden | Harrison | Linden-681 | Lin-681 | 32° 33.087' | -94° 31.346' |
| Livingston | Houston | Livingston-985 | Liv-985 | 31° 17.099' | -95° 24.335' |