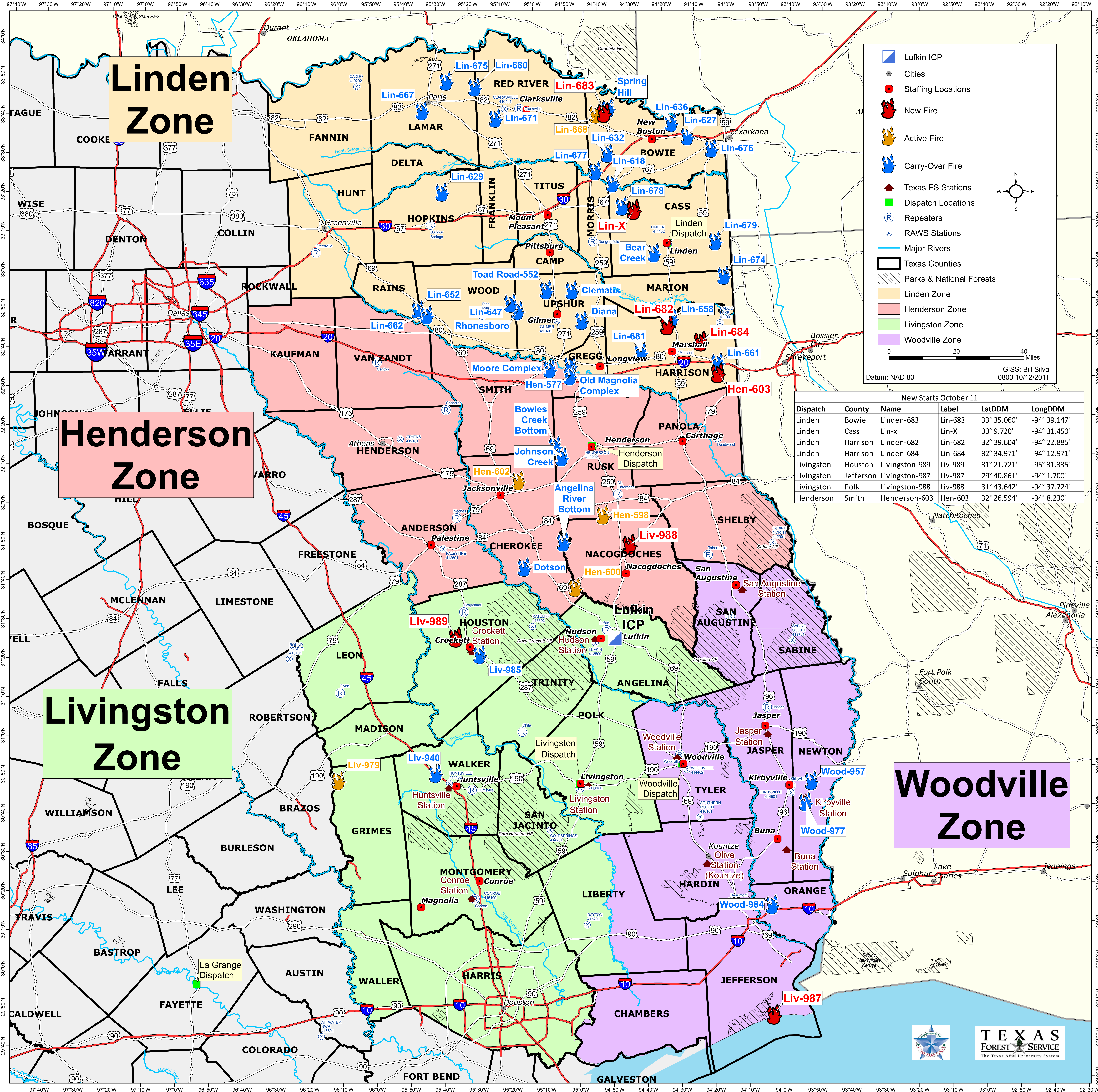


Southeast Texas Fire Complex TX-TXS-012009

BRIEFING MAP FIRE ACTIVITY ON OCTOBER 11, 2011



**Linden
Zone**

**Henderson
Zone**

**Livingston
Zone**

**Woodville
Zone**

- Lufkin ICP
- Cities
- Staffing Locations
- New Fire
- Active Fire
- Carry-Over Fire
- Texas FS Stations
- Dispatch Locations
- Repeaters
- RAWS Stations
- Major Rivers
- Texas Counties
- Parks & National Forests
- Linden Zone
- Henderson Zone
- Livingston Zone
- Woodville Zone

Datum: NAD 83
GIS: Bill Silva 0800 10/12/2011

New Starts October 11

Dispatch	County	Name	Label	LatDDM	LongDDM
Linden	Bowie	Linden-683	Lin-683	33° 35.060'	-94° 39.147'
Linden	Cass	Lin-x	Lin-X	33° 9.720'	-94° 31.450'
Linden	Harrison	Linden-682	Lin-682	32° 39.604'	-94° 22.885'
Linden	Harrison	Linden-684	Lin-684	32° 34.971'	-94° 12.971'
Livingston	Houston	Livingston-989	Liv-989	31° 21.721'	-95° 31.335'
Livingston	Jefferson	Livingston-987	Liv-987	29° 40.861'	-94° 1.700'
Livingston	Polk	Livingston-988	Liv-988	31° 43.642'	-94° 37.724'
Henderson	Smith	Henderson-603	Hen-603	32° 26.594'	-94° 8.230'

