

Hidden Pines Fire

est 4,582ac, 80% con.
As of 10/22 0800 hrs.

Div B

Div A

Div C

Div Z

Div Y

Legend:

- Structures (Green dot)
- Restricted Water Source (Red circle with W)
- Water Source (Blue circle with W)
- Drop Point (Black dot)
- Helibase (Blue circle with H)
- Incident Command Post (Blue square with ICP)
- Staging Area (Blue circle with S)
- Completed Line (Solid black line)
- Completed Dozer Line (Cross-hatched line)
- Division (Two curved lines)
- Roads and Streets (Thin black line)
- Fire Polygon (Pink shaded area)
- State Park Boundary (Green outline)
- Bastrop Complex (Grey shaded area)

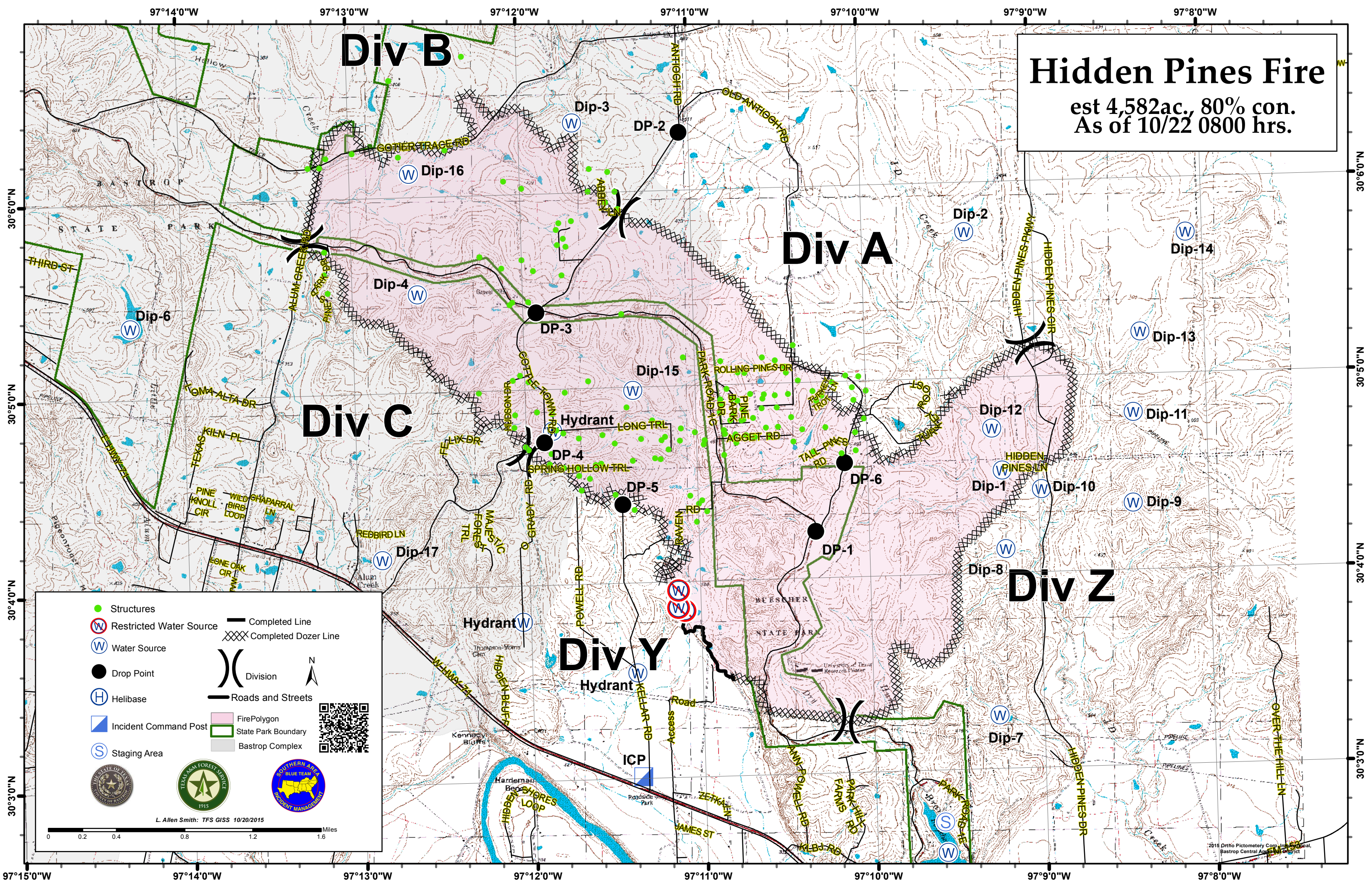
Logos:

- State of Texas
- Texas A&M Forest Service 1915
- Southern Area Blue Team Incident Management

Scale: 0 to 1.6 Miles

Metadata: L. Allen Smith: TFS GISS 10/20/2015

QR Code: [QR Code]



2016 Ortho Pictometry Corp. Imaged from aerial, Bastrop Central Area, TX District