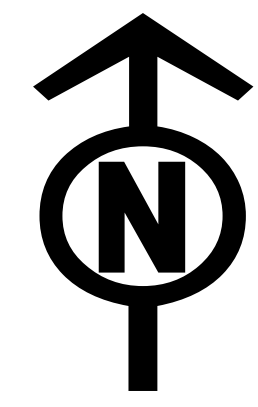




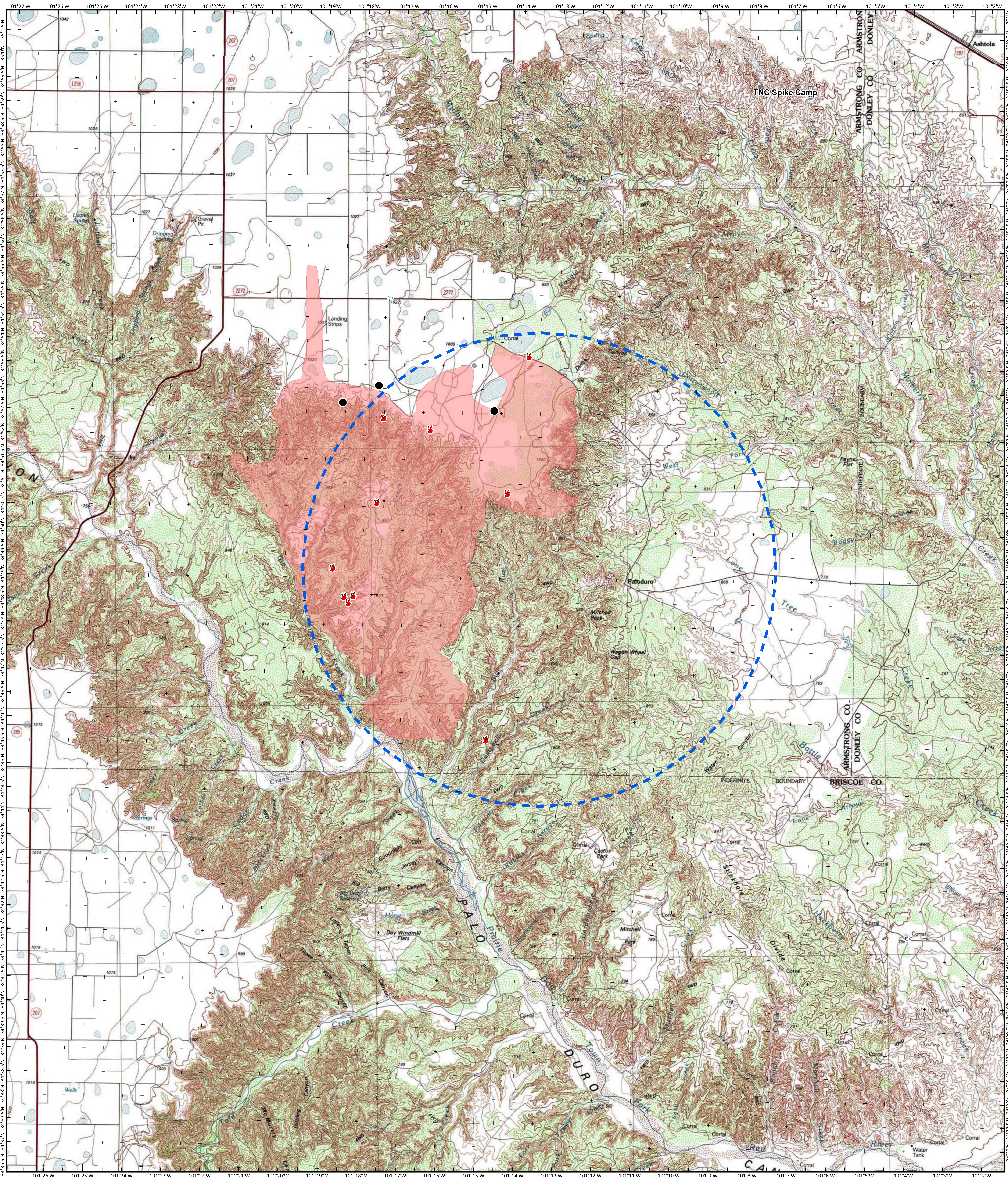
# Air Operations Map

## Mallard Fire TX-TXS-180461

Approximate Acreage: 27,788



5/11/2018



Branch Break  
Division Break

- Drop Point
- Gate
- Other
- TFR
- Wildfire Daily Fire Perimeter
- Fire Location
- Staging Area



Information shown is based on the best available data at the time of map production.

Perimeter from satellite interpretation and fixed wing flight.

Latest intel: 20180510 @ 0410

20180511 @ 1040  
Map Datum: NAD83 Feet  
Author: SA Red Team

