



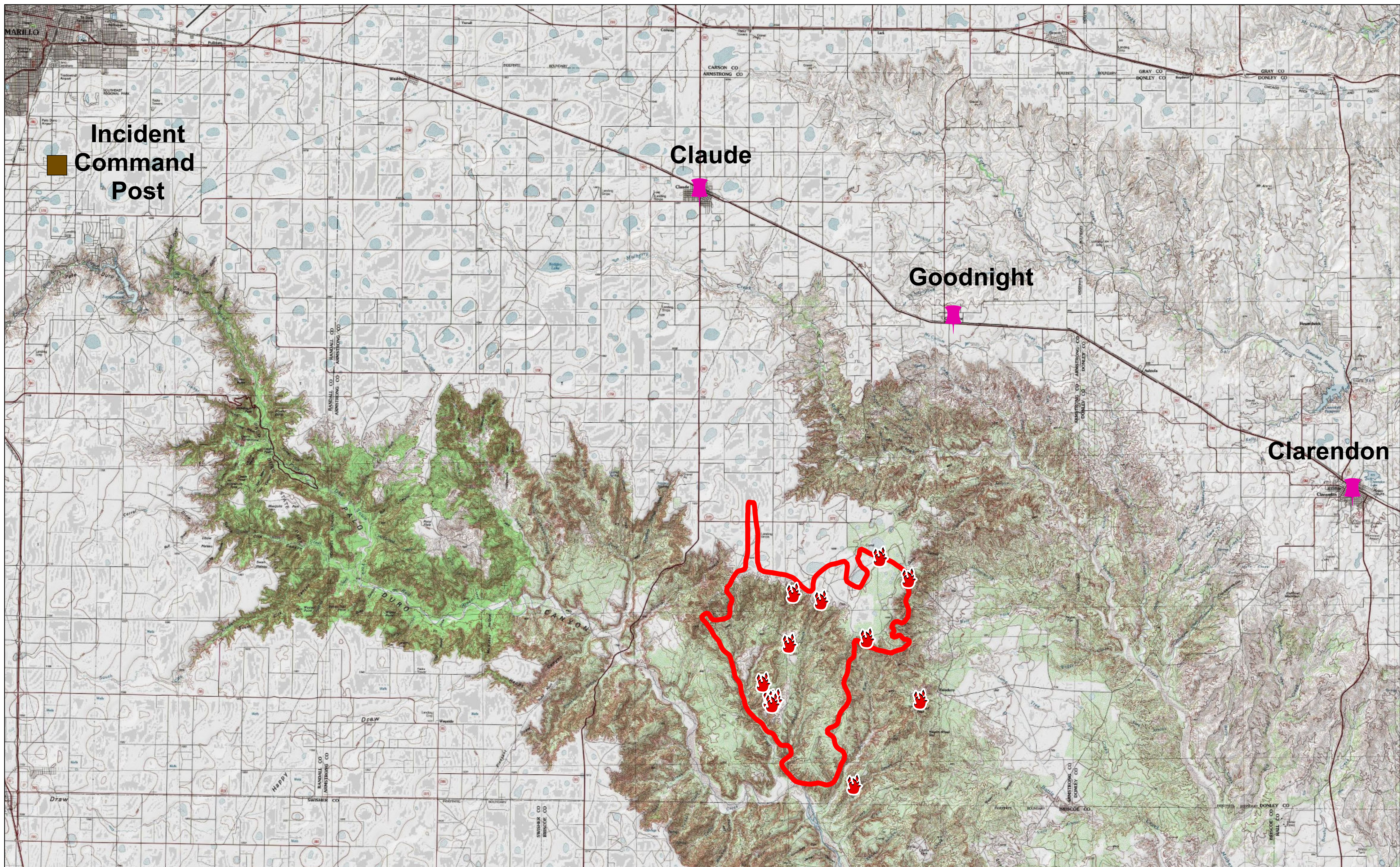
Public Information Map

Mallard Fire

TX-TXS-180461
Approximate Acreage: 27,788



5/11/2018







Incident Command Post

Claude

Goodnight

Clarendon

-  Fire Perimeter
-  Points of Interest
-  Fire Location
-  Incident Command Post

Information shown is based on the best available data at the time of map production. Perimeter from satellite interpretation and fixed wing flight. Latest intel: 20180510 @ 0410

20180511 @ 1500
Map Datum: NAD83 Feet
Author: SA Red Team

