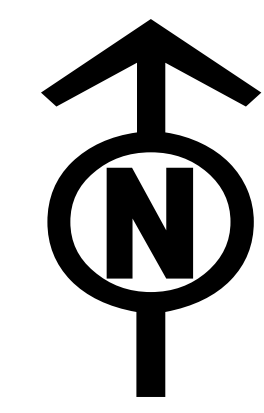




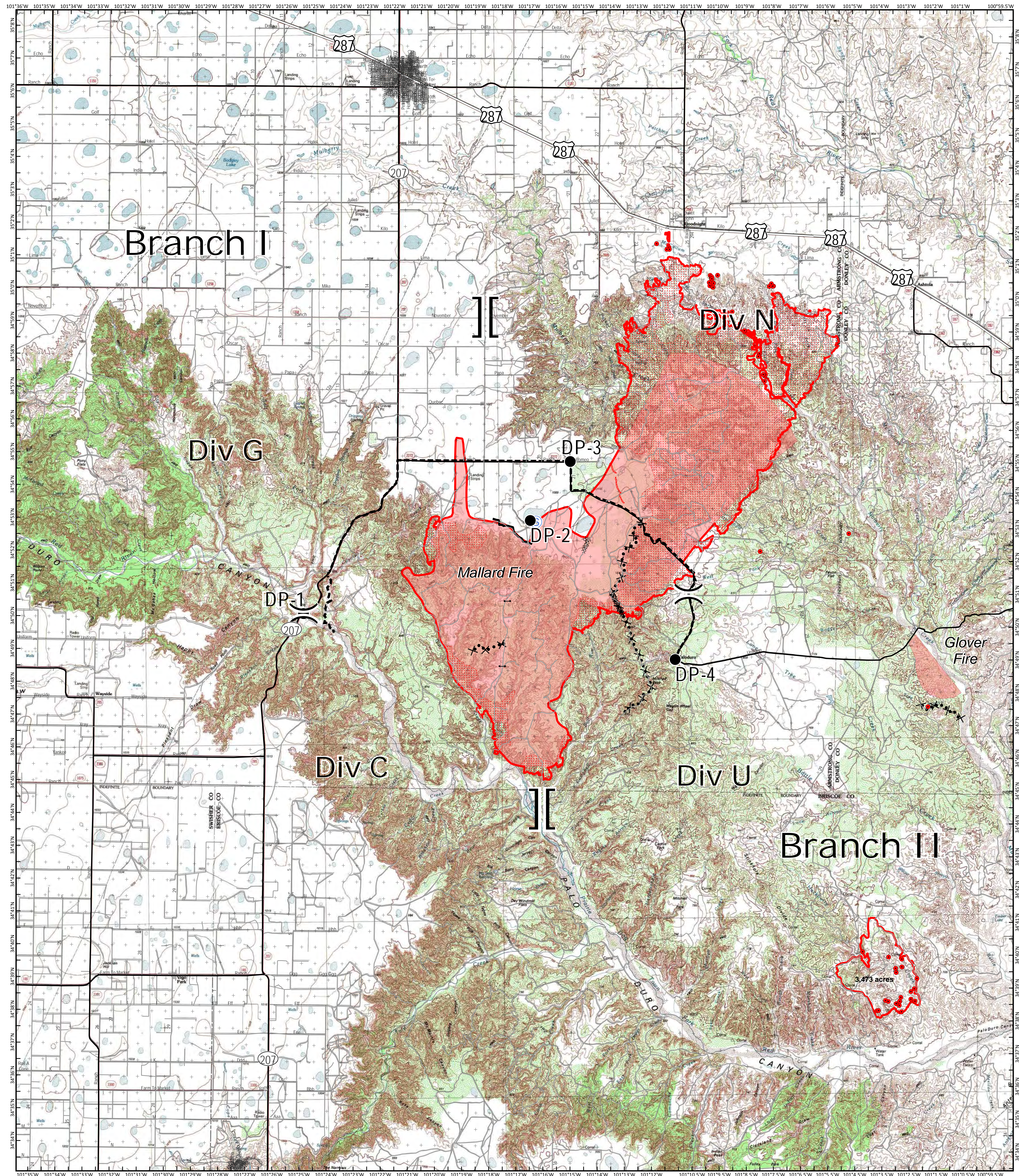
IR - Operations Map

Mallard Fire TX-TXS-180461

Approximate IR Acreage: 60,416



5/12/2018



]] Branch Break
) Division Break

- IR Isolated Heat Source
- Drop Point
- ⊖ Gate
- Ⓢ Staging Area

- Primary US & State Highways
- Secondary State & County
- Roads
- Completed Line

- XXXXXX Completed Dozer Line
- X-X-X Proposed Dozer Line
- - - Planned Fire Line
- Other

- ▭ IR Heat Perimeter
- ▨ IR Intense Heat
- ▤ IR Scattered Heat
- ▦ Fires



Information shown is based on the best available data at the time of map production.
Perimeter from satellite interpretation and fixed wing flight.
Latest intel: 20180512 @ 0032

20180512 @ 0533
Map Datum: NAD83 Feet
Author: SA Red Team
0 1 2 4 Miles