



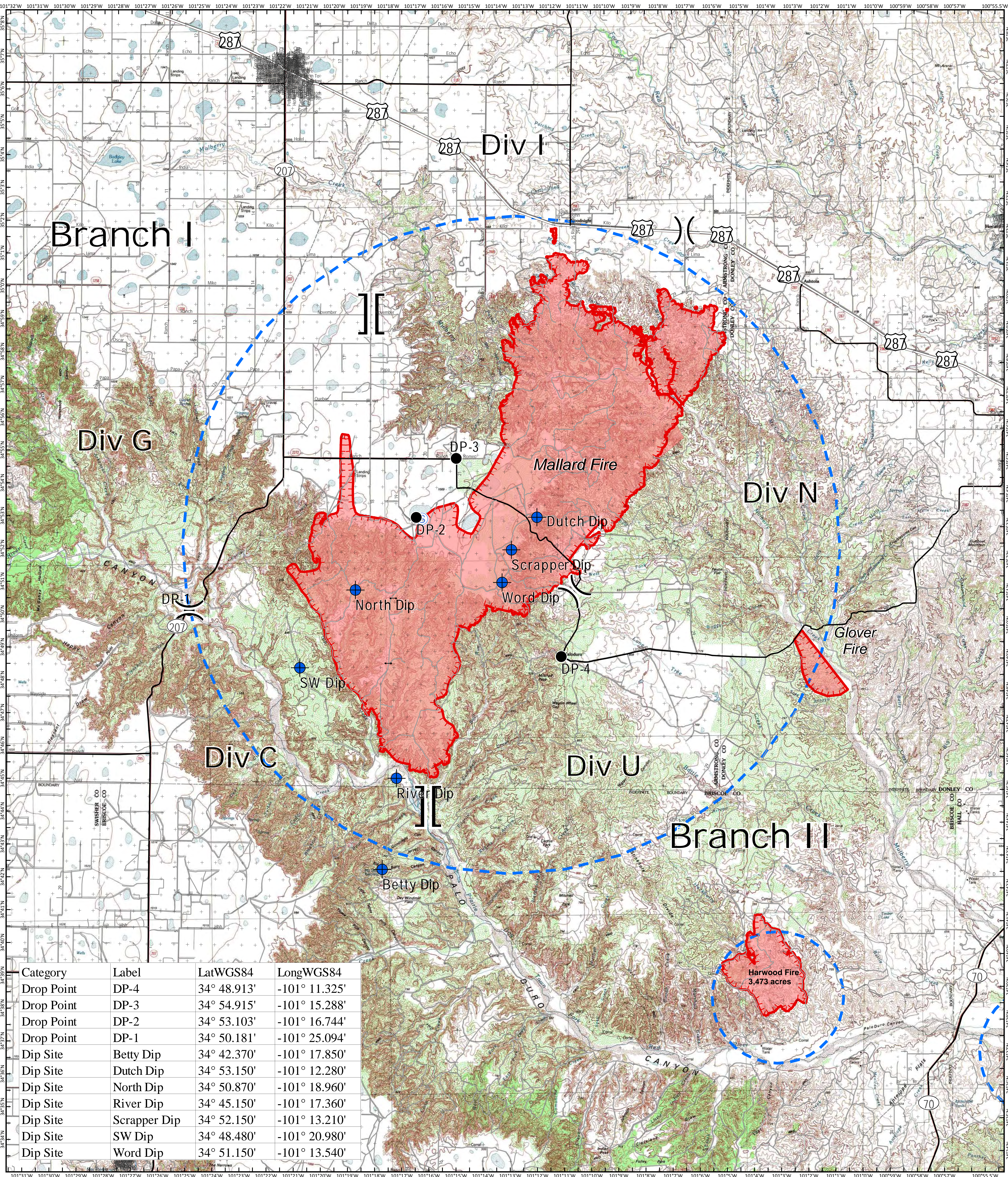
Air Operations Map

Mallard Fire
TX-TXS-180461

Approximate Acreage: 60,416



5/12/2018



Category	Label	LatWGS84	LongWGS84
Drop Point	DP-4	34° 48.913'	-101° 11.325'
Drop Point	DP-3	34° 54.915'	-101° 15.288'
Drop Point	DP-2	34° 53.103'	-101° 16.744'
Drop Point	DP-1	34° 50.181'	-101° 25.094'
Dip Site	Betty Dip	34° 42.370'	-101° 17.850'
Dip Site	Dutch Dip	34° 53.150'	-101° 12.280'
Dip Site	North Dip	34° 50.870'	-101° 18.960'
Dip Site	River Dip	34° 45.150'	-101° 17.360'
Dip Site	Scrapper Dip	34° 52.150'	-101° 13.210'
Dip Site	SW Dip	34° 48.480'	-101° 20.980'
Dip Site	Word Dip	34° 51.150'	-101° 13.540'

]] Branch Break
 ● Drop Point
 — Gate
 — Primary US & State Highways
● Dip Site
 Ⓢ Staging Area
 — Secondary State & County
 — Roads
)) Division Break
 — Uncontrolled Fire Edge
 — Temporary Flight Restriction
 ■ Fires



Information shown is based on the best available data at the time of map production.
 Perimeter from satellite interpretation and fixed wing flight.
 Latest intel: 20180512 @ 0032
 20180512 @ 1302
 Map Datum: NAD83 Feet
 Author: SA Red Team
 0 1 2 4 Miles