



Operations Map

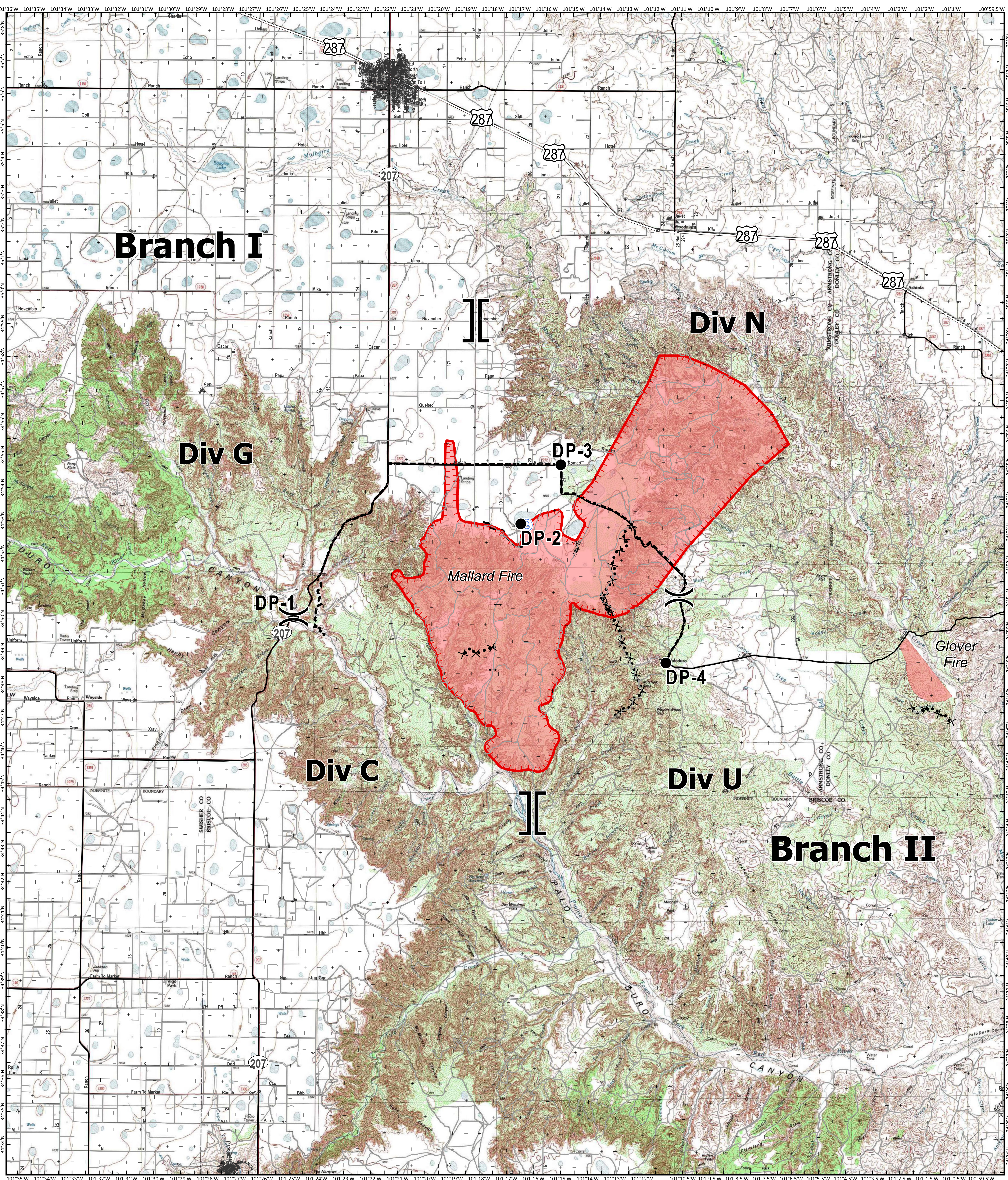
Mallard Fire

TX-TXS-180461

Approximate Acreage: 47,407



5/12/2018



- Drop Point
- Completed Line
- Branch Break
- Division Break
- Gate
- Staging Area
- Primary US & State Highways
- Secondary State & County
- Roads
- Uncontrolled Fire Edge
- Completed Dozer Line
- Proposed Dozer Line
- Planned Fire Line
- Other
- Fires



Information shown is based on the best available data at the time of map production.

Perimeter from satellite interpretation and fixed wing flight.

Latest intel: 20180511 @ 1600

20180511 @ 1800
Map Datum: NAD83 Feet
Author: SA Red Team

