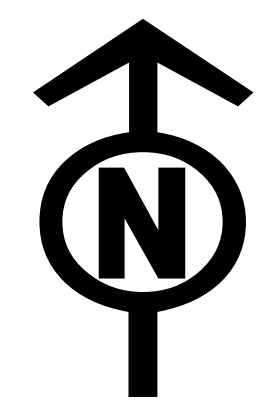




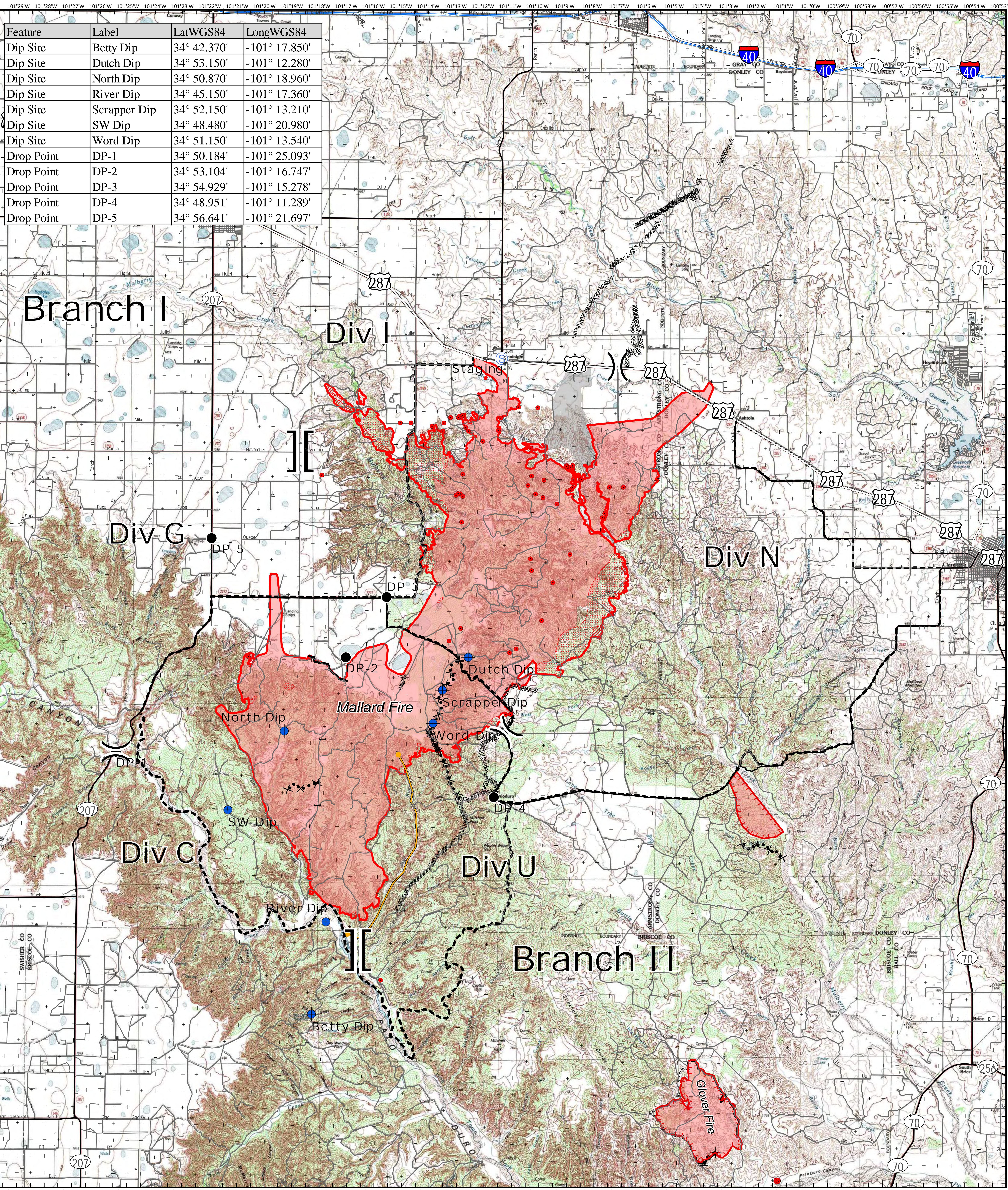
IR - Operations Safety Map

Mallard Fire
TX-TXS-180461

Approximate IR Acreage: 69,057



5/13/2018



Feature	Label	LatWGS84	LongWGS84
Dip Site	Betty Dip	34° 42.370'	-101° 17.850'
Dip Site	Dutch Dip	34° 53.150'	-101° 12.280'
Dip Site	North Dip	34° 50.870'	-101° 18.960'
Dip Site	River Dip	34° 45.150'	-101° 17.360'
Dip Site	Scrapper Dip	34° 52.150'	-101° 13.210'
Dip Site	SW Dip	34° 48.480'	-101° 20.980'
Dip Site	Word Dip	34° 51.150'	-101° 13.540'
Drop Point	DP-1	34° 50.184'	-101° 25.093'
Drop Point	DP-2	34° 53.104'	-101° 16.747'
Drop Point	DP-3	34° 54.929'	-101° 15.278'
Drop Point	DP-4	34° 48.951'	-101° 11.289'
Drop Point	DP-5	34° 56.641'	-101° 21.697'

]] Branch Break
)) Division Break

- IR Isolated Heat Source
- Dip Site
- Drop Point
- Primary Limited Access
- Primary US & State Highways
- Secondary State & County
- Roads
- Event_Line1 selection
- Completed Line
- Completed Dozer Line
- R - R - R Road as Completed Line
- Proposed Dozer Line
- Planned Fire Line
- Management Action Point
- Other
- IR Heat Perimeter
- IR Intense Heat
- IR Scattered Heat
- Fires
- Unknown



Information shown is based on the best available data at the time of map production.
Perimeter from satellite interpretation and fixed wing flight.
Latest intel: 20180513 @ 2141

20180513 @ 0452
Map Datum: NAD83 Feet
Author: SA Red Team
0 1 2 4 Miles