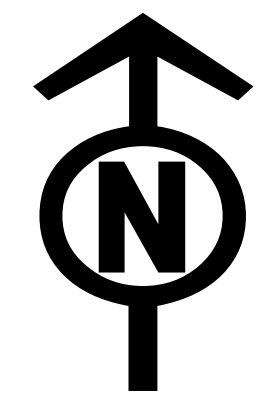




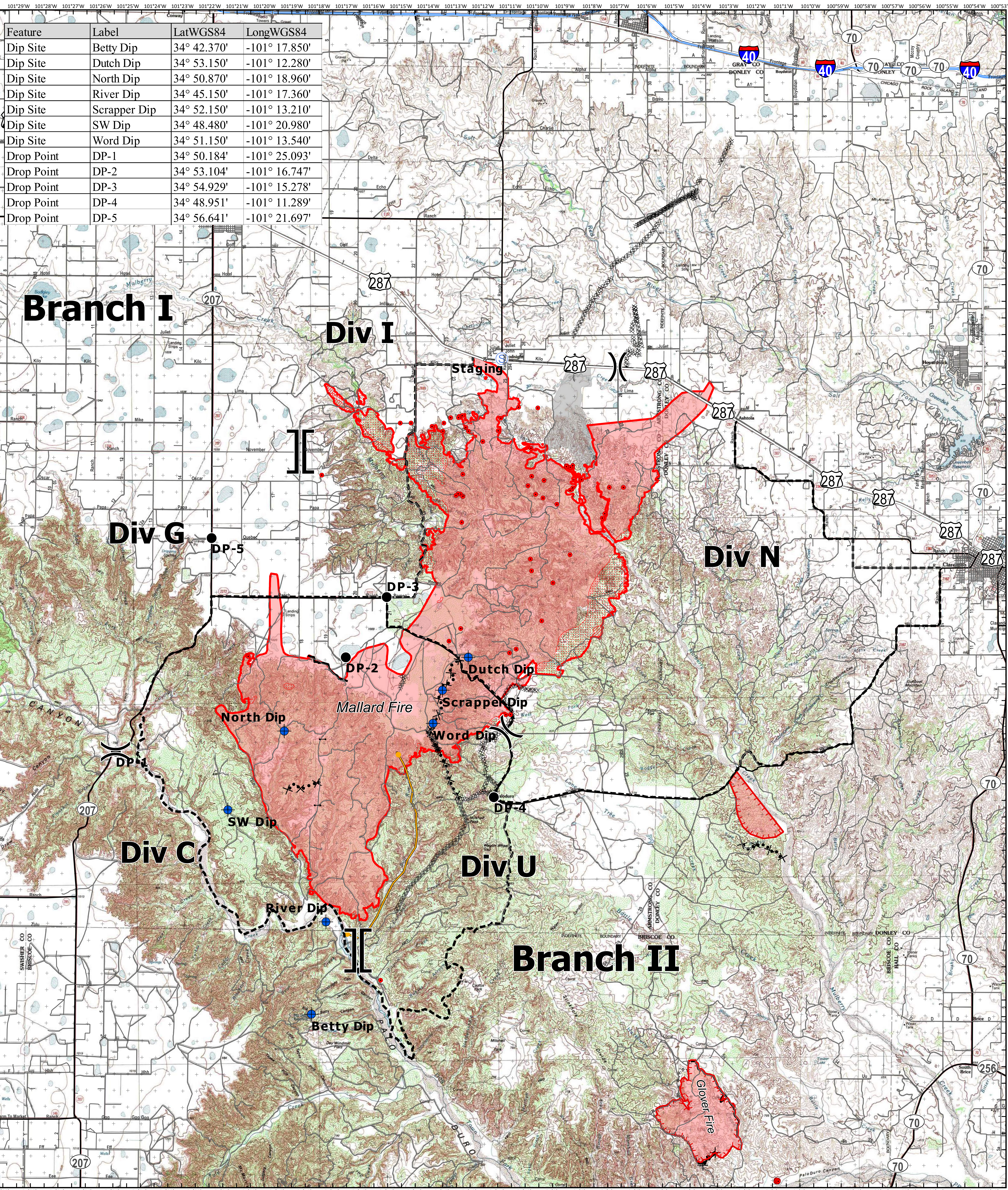
# IR - Operations Safety Map

**Mallard Fire**  
TX-TXS-180461

Approximate IR Acreage: 69,057



5/13/2018



Feature	Label	LatWGS84	LongWGS84
Dip Site	Betty Dip	34° 42.370'	-101° 17.850'
Dip Site	Dutch Dip	34° 53.150'	-101° 12.280'
Dip Site	North Dip	34° 50.870'	-101° 18.960'
Dip Site	River Dip	34° 45.150'	-101° 17.360'
Dip Site	Scrapper Dip	34° 52.150'	-101° 13.210'
Dip Site	SW Dip	34° 48.480'	-101° 20.980'
Dip Site	Word Dip	34° 51.150'	-101° 13.540'
Drop Point	DP-1	34° 50.184'	-101° 25.093'
Drop Point	DP-2	34° 53.104'	-101° 16.747'
Drop Point	DP-3	34° 54.929'	-101° 15.278'
Drop Point	DP-4	34° 48.951'	-101° 11.289'
Drop Point	DP-5	34° 56.641'	-101° 21.697'

[[ Branch Break  
)) Division Break  
● Drop Point  
● Dip Site  
○ Staging Area  
--- Completed Dozer Line  
--- R - R - R Road as Completed Line  
--- Proposed Dozer Line  
--- Planned Fire Line  
--- Management Action Point  
Other  
■ IR Isolated Heat Source  
■ IR Intense Heat  
■ IR Scattered Heat  
■ IR Heat Perimeter  
■ Fires  
■ Unknown



Information shown is based on the best available data at the time of map production.  
 Perimeter from satellite interpretation and fixed wing flight.  
 Latest intel: 20180513 @ 2141  
 20180513 @ 0452  
 Map Datum: NAD83 Feet  
 Author: SA Red Team  
 0 1 2 4 Miles