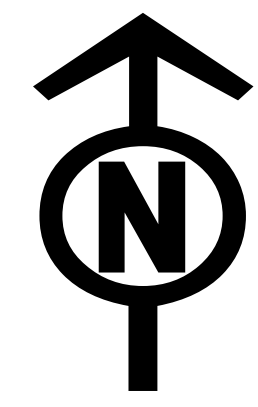




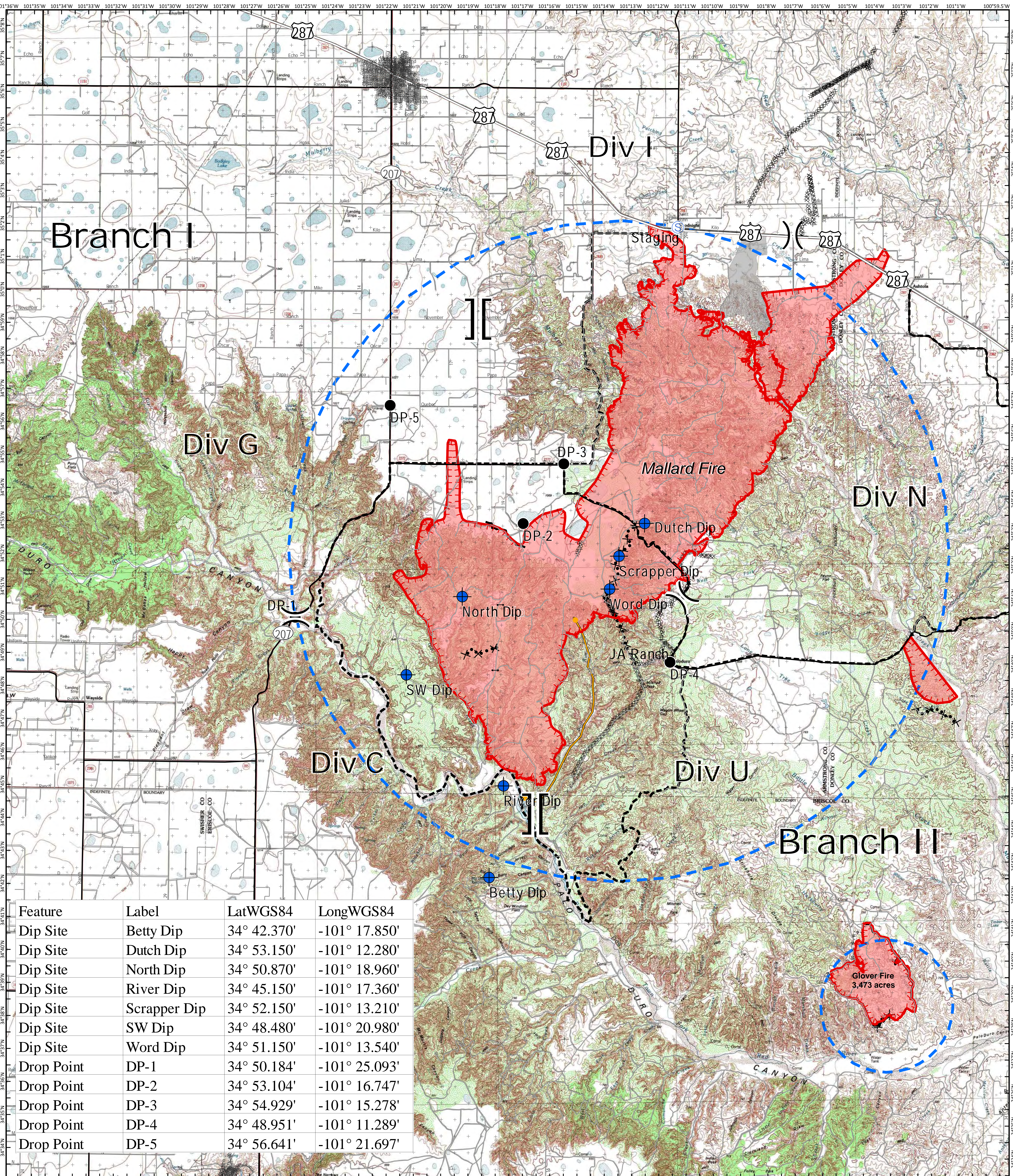
Air Operations Map

Mallard Fire
TX-TXS-180461

Approximate Acreage: 60,416



5/13/2018



Feature	Label	LatWGS84	LongWGS84
Dip Site	Betty Dip	34° 42.370'	-101° 17.850'
Dip Site	Dutch Dip	34° 53.150'	-101° 12.280'
Dip Site	North Dip	34° 50.870'	-101° 18.960'
Dip Site	River Dip	34° 45.150'	-101° 17.360'
Dip Site	Scrapper Dip	34° 52.150'	-101° 13.210'
Dip Site	SW Dip	34° 48.480'	-101° 20.980'
Dip Site	Word Dip	34° 51.150'	-101° 13.540'
Drop Point	DP-1	34° 50.184'	-101° 25.093'
Drop Point	DP-2	34° 53.104'	-101° 16.747'
Drop Point	DP-3	34° 54.929'	-101° 15.278'
Drop Point	DP-4	34° 48.951'	-101° 11.289'
Drop Point	DP-5	34° 56.641'	-101° 21.697'

● Drop Point — Primary US & State Highways — Completed Line — Planned Fire Line
⊕ Dip Site — Secondary State & County ⊗ Completed Dozer Line — Management Action Point
— Branch Break — Roads — R - R - R Road as Completed Line — Other
— Division Break — Gate — Uncontrolled Fire Edge ⊗ Proposed Dozer Line — Temporary Flight Restriction
⊙ Staging Area — Unknown — Fires



20180512 @ 1839
 Information shown is based on the best available data at the time of map production.
 Map Datum: NAD83 Feet
 Author: SA Red Team
 Perimeter from satellite interpretation and fixed wing flight.
 Latest intel: 20180512 @ 1800
 0 1 2 4 Miles