

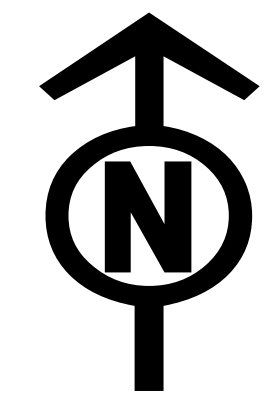


Operations Map

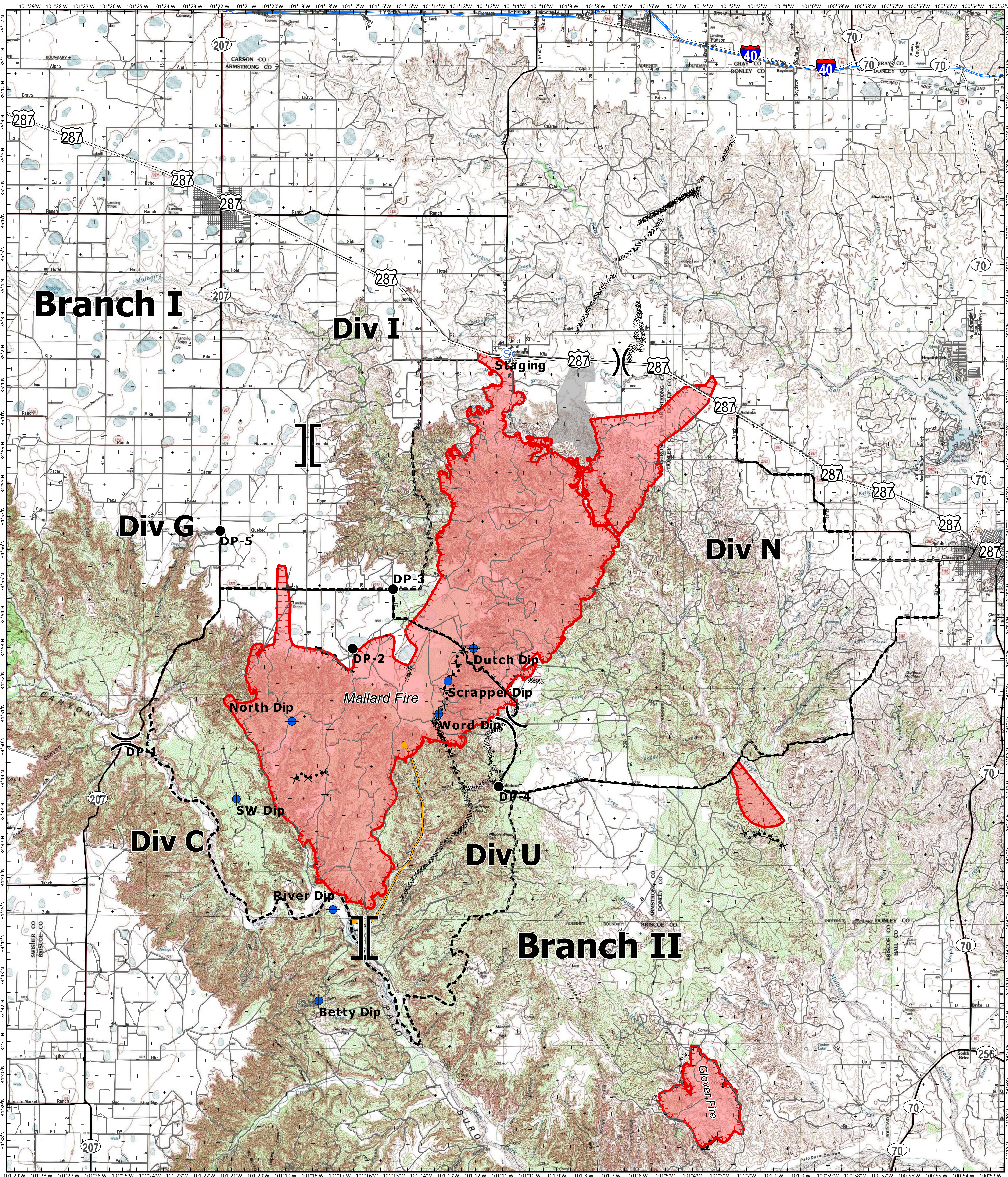
Mallard Fire

TX-TXS-180461

Approximate Acreage: 60,416



5/13/2018



Branch Break
 Division Break
 Drop Point
 Dip Site
 Gate
 Staging Area
 Primary Limited Access
 Primary US & State Highways
 Secondary State & County
 Roads
 Uncontrolled Fire Edge
 Completed Line
 Completed Dozer Line
 R-R Road as Completed Line
 Proposed Dozer Line
 Planned Fire Line
 Management Action Point
 Other
 Fires
 Unknown



Information shown is based on the best available data at the time of map production.

Perimeter from satellite interpretation and fixed wing flight.

Latest intel: 20180512 @ 1900

20180512 @ 2100
Map Datum: NAD83 Feet
Author: SA Red Team

0 1 2 4 Miles