

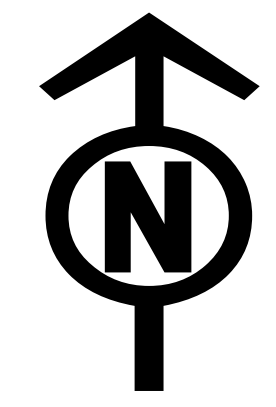


Operations Map

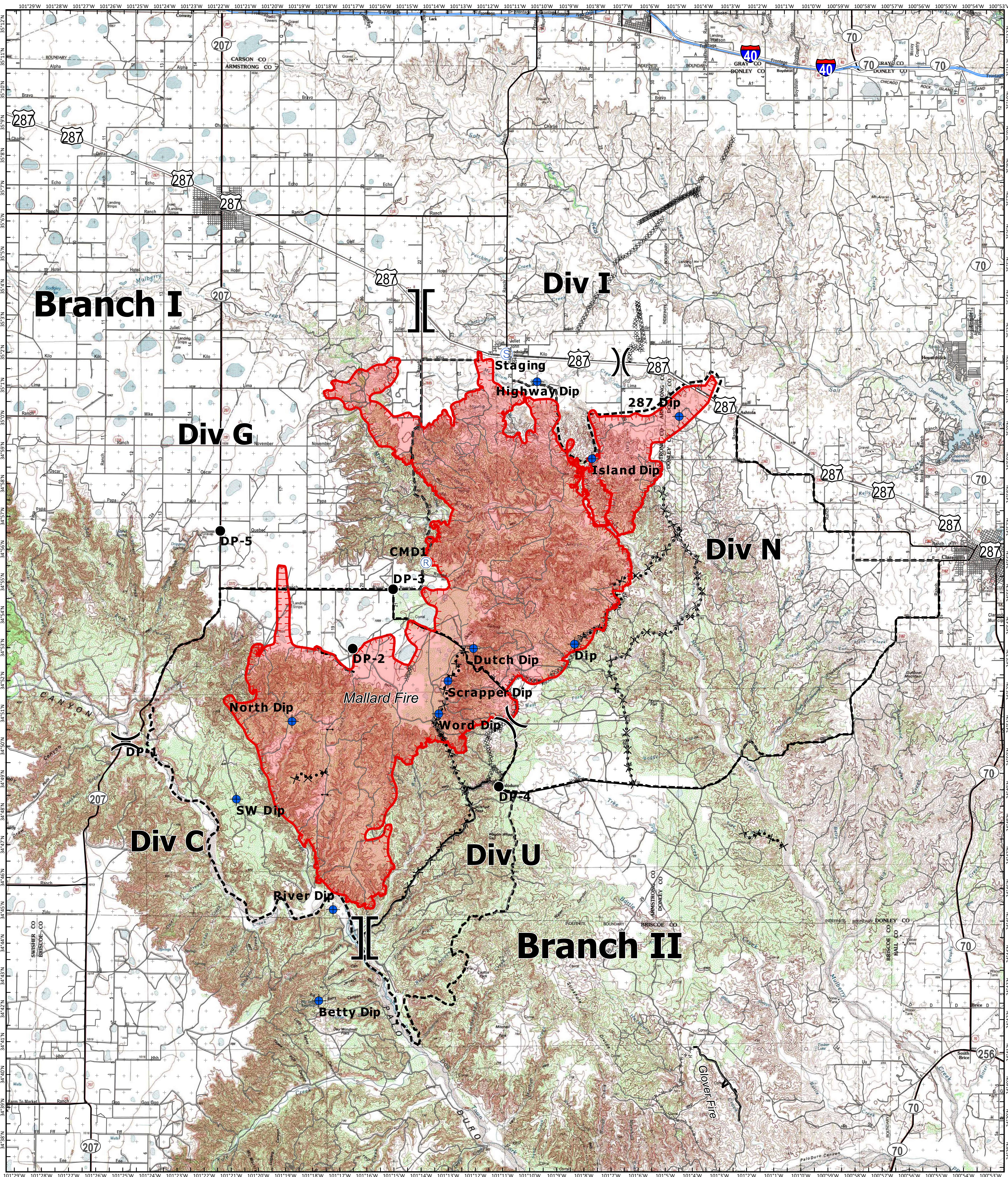
Mallard Fire

TX-TXS-180461

Approximate Acreage: 73,521



5/13/2018



- Branch Break
- Division Break
- Drop Point
- Repeater
- Dip Site
- Gate
- Staging Area
- Uncontrolled Fire Edge
- Primary Limited Access
- Primary US & State Highways
- Secondary State & County Roads
- Completed Line
- Completed Dozer Line
- R-R-R Road as Completed Line
- Proposed Dozer Line
- Planned Fire Line
- Other
- Mallard Fire Polygon



Information shown is based on the best available data at the time of map production.

Perimeter from satellite interpretation and fixed wing flight.

Latest intel: 20180513 @ 1700

20180513 @ 1700
Map Datum: NAD83 Feet
Author: SA Red Team

