

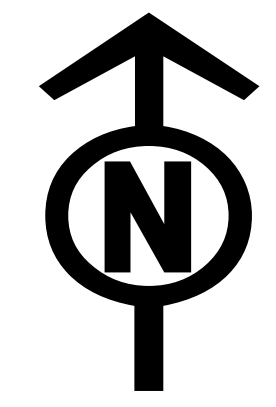


# Operations Map

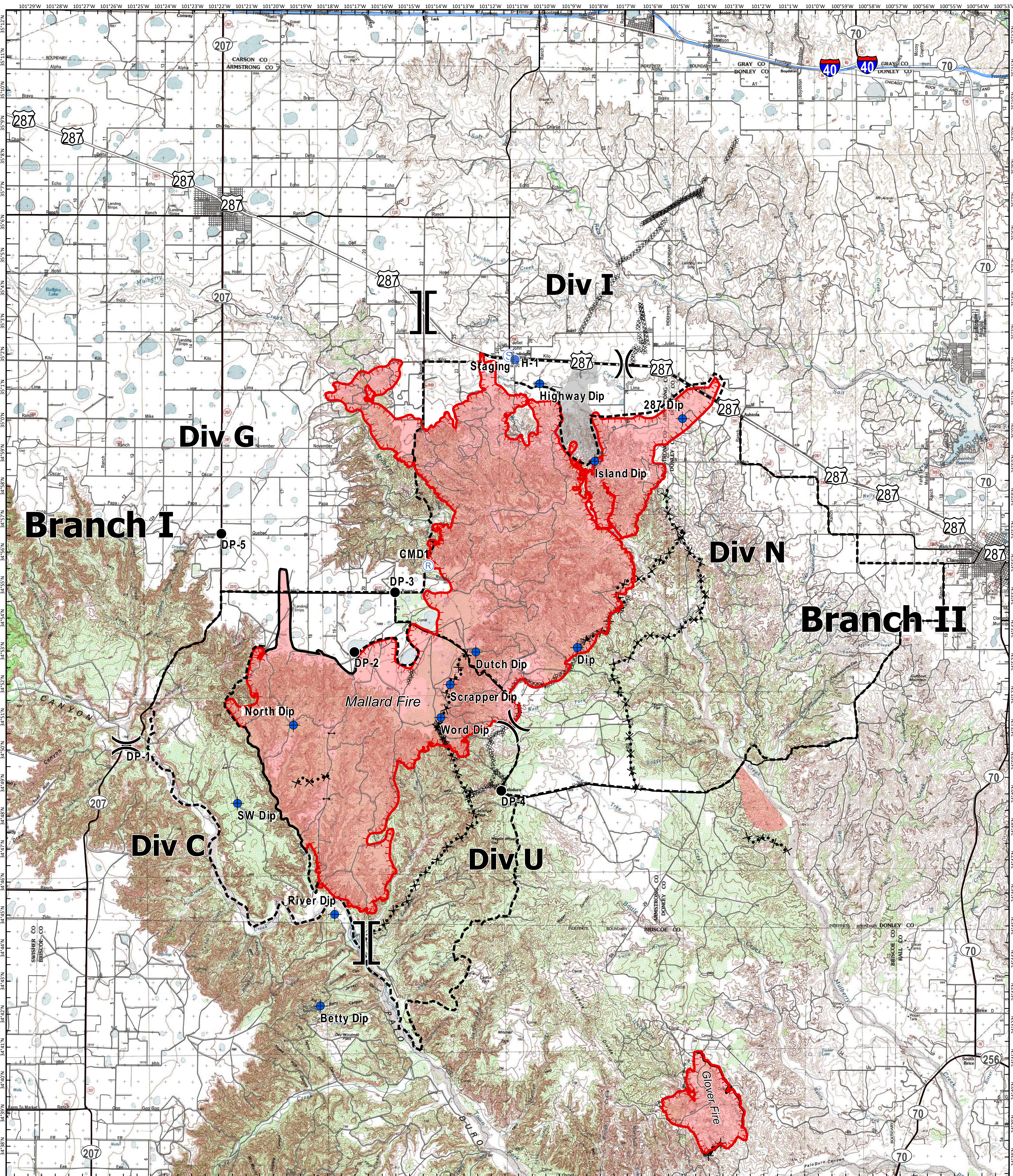
## Mallard Fire

TX-TXS-180461

Approximate Acreage: 73,521



5/14/2018



- Branch Break
- Division Break
- Drop Point
- Helispot
- Repeater
- Gate
- Staging Area
- Uncontrolled Fire Edge
- Completed Line
- Completed Dozer Line
- Road as Completed Line
- Proposed Dozer Line
- Planned Fire Line
- Other
- Primary Limited Access
- Primary US & State Highways
- Secondary State & County
- Roads



Information shown is based on the best available data at the time of map production.

Perimeter from satellite interpretation and fixed wing flight.

20180513 @ 2200  
Map Datum: NAD83 Feet  
Author: SA Red Team

0 1 2 4 Miles

Latest intel: 20180513 @ 2100