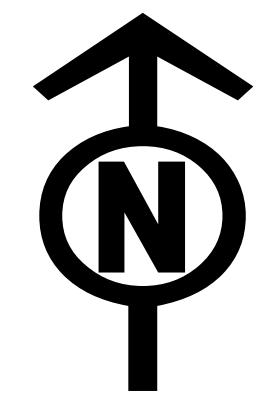


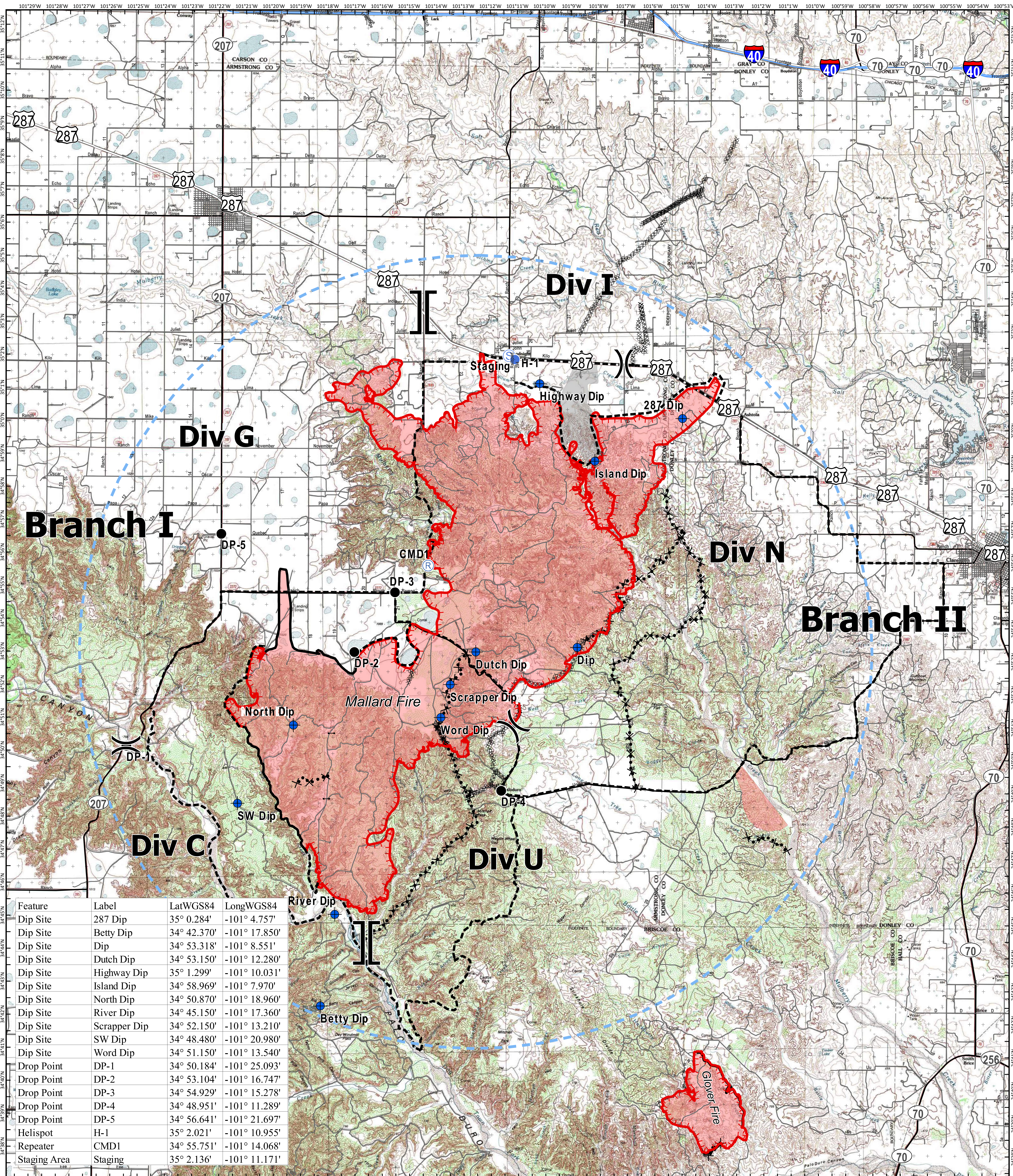


# Operations Safety Map

**Mallard Fire**  
TX-TXS-180461  
Approximate Acreage: 73,521



5/14/2018



Feature	Label	LatWGS84	LongWGS84
Dip Site	287 Dip	35° 0.284'	-101° 4.757'
Dip Site	Betty Dip	34° 42.370'	-101° 17.850'
Dip Site	Dip	34° 53.318'	-101° 8.551'
Dip Site	Dutch Dip	34° 53.150'	-101° 12.280'
Dip Site	Highway Dip	35° 1.299'	-101° 10.031'
Dip Site	Island Dip	34° 58.969'	-101° 7.970'
Dip Site	North Dip	34° 50.870'	-101° 18.960'
Dip Site	River Dip	34° 45.150'	-101° 17.360'
Dip Site	Scrapper Dip	34° 52.150'	-101° 13.210'
Dip Site	SW Dip	34° 48.480'	-101° 20.980'
Dip Site	Word Dip	34° 51.150'	-101° 13.540'
Drop Point	DP-1	34° 50.184'	-101° 25.093'
Drop Point	DP-2	34° 53.104'	-101° 16.747'
Drop Point	DP-3	34° 54.929'	-101° 15.278'
Drop Point	DP-4	34° 48.951'	-101° 11.289'
Drop Point	DP-5	34° 56.641'	-101° 21.697'
Helispot	H-1	35° 2.021'	-101° 10.955'
Repeater	CMD1	34° 55.751'	-101° 14.068'
Staging Area	Staging	35° 2.136'	-101° 11.171'

[[ Branch Break  
⦿ Drop Point  
⦿ Dip Site  
Ⓜ Repeater  
Ⓜ Staging Area  
Ⓜ Uncontrolled Fire Edge  
Ⓜ Temporary Flight Restriction  
Ⓜ Division Break  
— Completed Line  
Ⓜ Completed Dozer Line  
Ⓜ Road as Completed Line  
Ⓜ Proposed Dozer Line  
Ⓜ Planned Fire Line  
Ⓜ Other  
— Primary US & State Highways  
— Secondary State & County  
— Roads



Information shown is based on the best available data at the time of map production.  
Perimeter from satellite interpretation and fixed wing flight.  
Latest intel: 20180513 @ 2100

20180513 @ 2200  
 Map Datum: NAD83 Feet  
 Author: SA Red Team  
 0 1 2 4 Miles