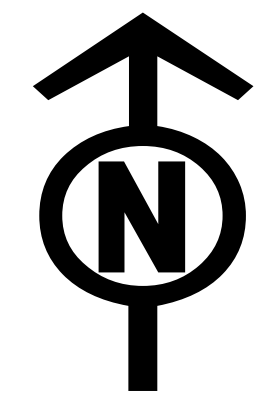




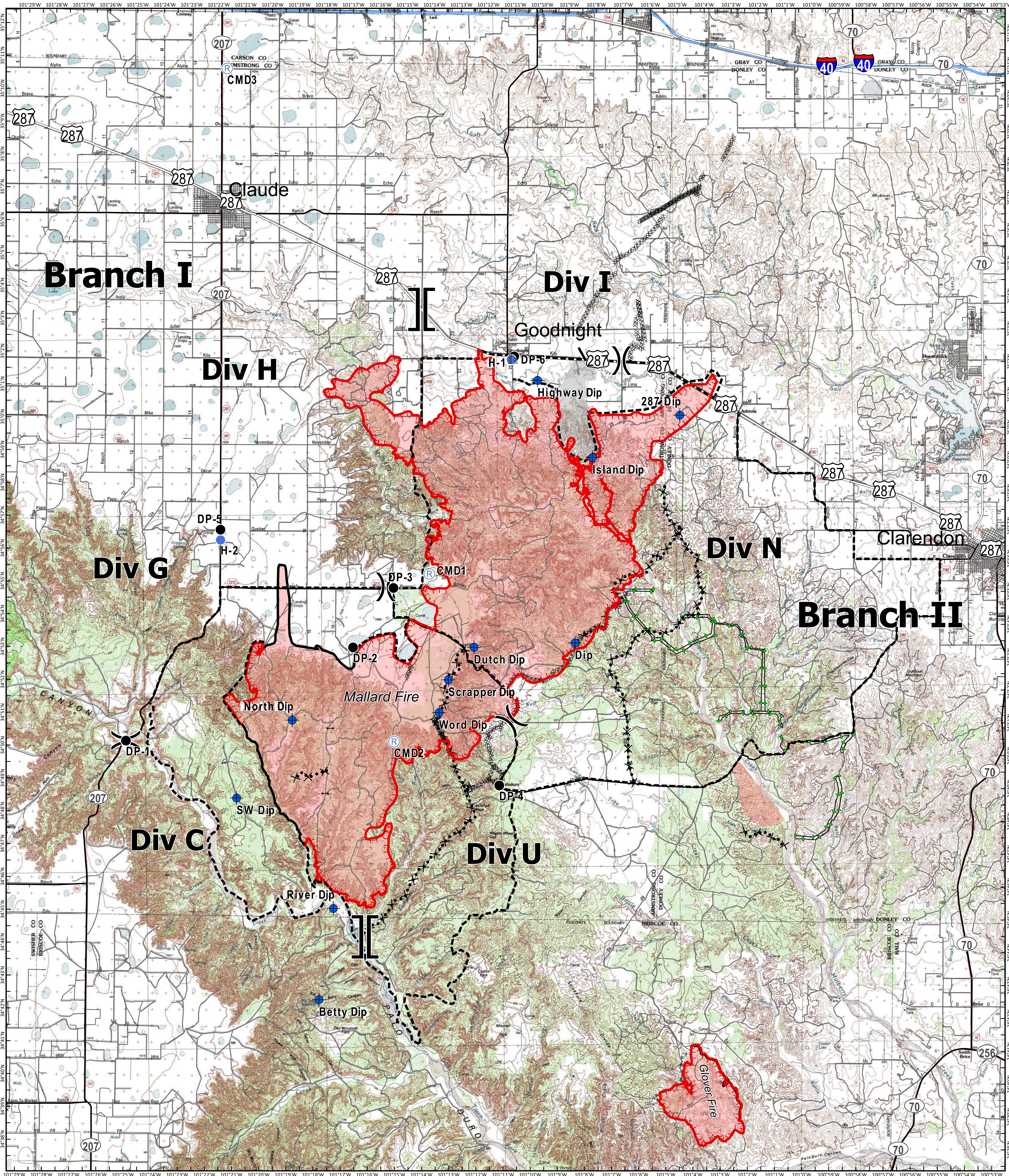
Operations Map

Mallard Fire

TX-TXS-180461
Approximate Acreage: 74,464



5/15/2018



- Branch Break
- Division Break
- Drop Point
- Helispot
- Gate
- Uncontrolled Fire Edge
- Completed Line
- Repeater
- Completed Dozer Line
- Proposed Dozer Line
- Planned Fire Line
- Primary Limited Access
- R-R-R Road as Completed Line
- Completed Plow Line
- Primary US & State Highways
- Secondary State & County
- Roads



Information shown is based on the best available data at the time of map production.

Perimeter from satellite interpretation and fixed wing flight.

Latest intel: 20180513 @ 2147

20180514 @ 2030
Map Datum: NAD83 Feet
Author: SA Red Team

0 1 2 4 Miles