

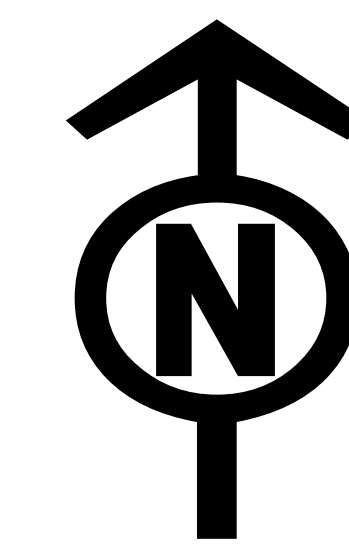


Transportation Map

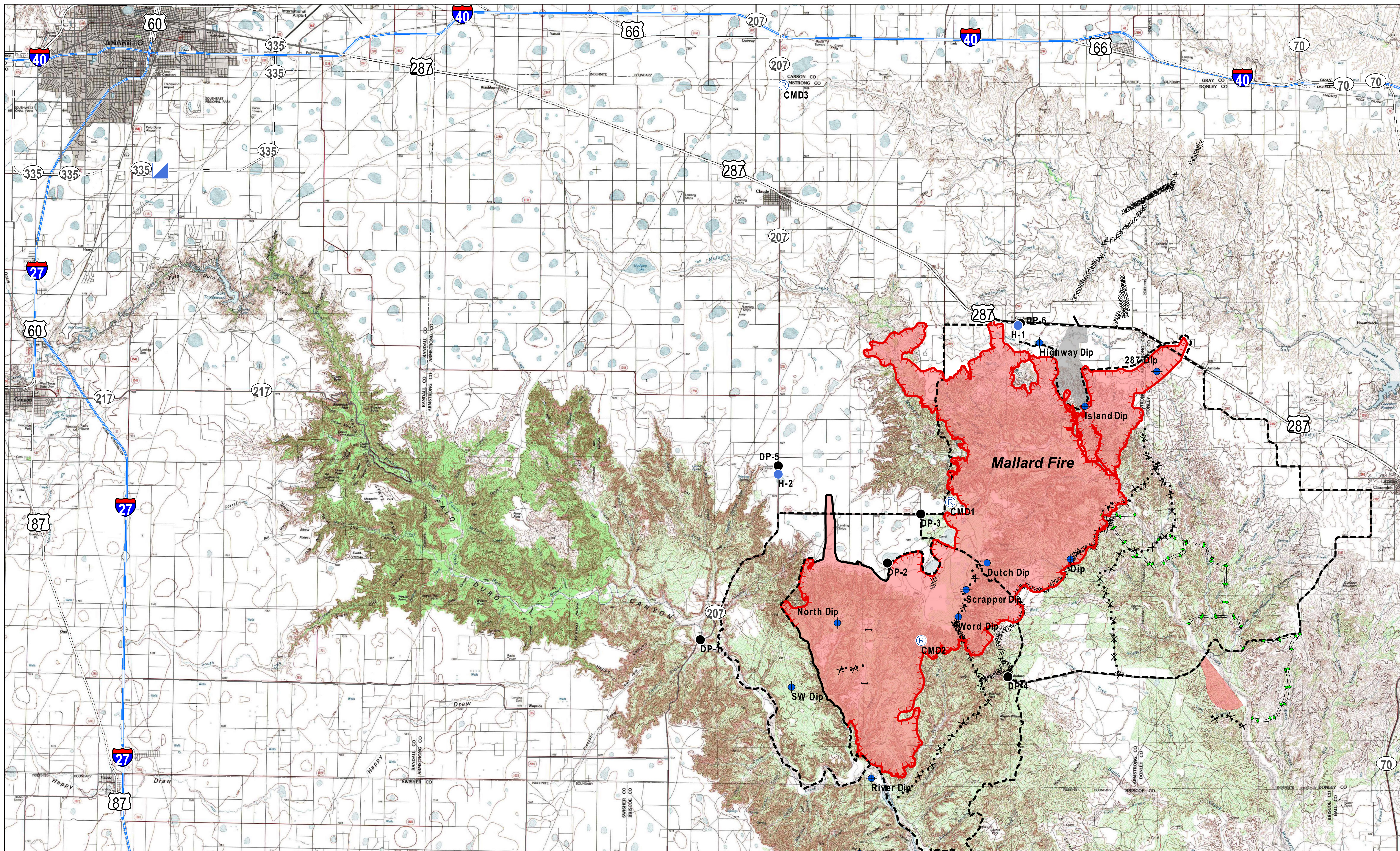
Mallard Fire

TX-TXS-180461

Approximate Acreage: 74,464



5/15/2018



- Drop Point
- Ⓢ Staging Area
- ↔ Gates
- ▢ Incident Command Post
- ▢ Fires
- Dip Site
- Uncontrolled Fire Edge
- Completed Line
- Completed Dozer Line
- Completed Plow Line
- × · × Proposed Dozer Line
- Planned Fire Line



20180514 @ 2118
 Map Datum: NAD83 Feet
 Author: SA Red Team