



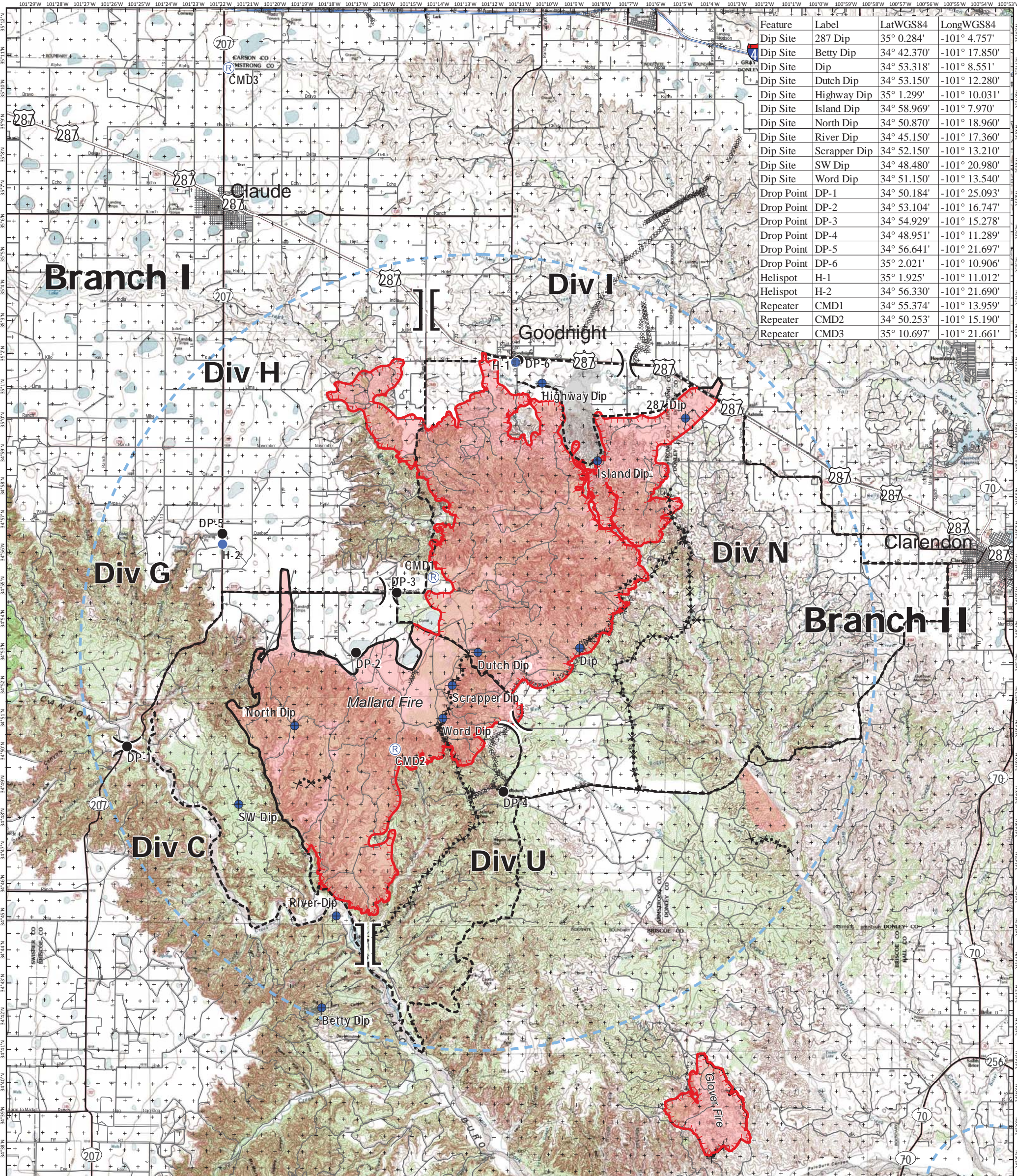
Air Operations Map

Mallard Fire
TX-TXS-180461

Approximate Acreage: 75,425



5/16/2018



Feature	Label	LatWGS84	LongWGS84
Dip Site	287 Dip	35° 0.284'	-101° 4.757'
Dip Site	Betty Dip	34° 42.370'	-101° 17.850'
Dip Site	Dip	34° 53.318'	-101° 8.551'
Dip Site	Dutch Dip	34° 53.150'	-101° 12.280'
Dip Site	Highway Dip	35° 1.299'	-101° 10.031'
Dip Site	Island Dip	34° 58.969'	-101° 7.970'
Dip Site	North Dip	34° 50.870'	-101° 18.960'
Dip Site	River Dip	34° 45.150'	-101° 17.360'
Dip Site	Scrapper Dip	34° 52.150'	-101° 13.210'
Dip Site	SW Dip	34° 48.480'	-101° 20.980'
Dip Site	Word Dip	34° 51.150'	-101° 13.540'
Drop Point	DP-1	34° 50.184'	-101° 25.093'
Drop Point	DP-2	34° 53.104'	-101° 16.747'
Drop Point	DP-3	34° 54.929'	-101° 15.278'
Drop Point	DP-4	34° 48.951'	-101° 11.289'
Drop Point	DP-5	34° 56.641'	-101° 21.697'
Drop Point	DP-6	35° 2.021'	-101° 10.906'
Helispot	H-1	35° 1.925'	-101° 11.012'
Helispot	H-2	34° 56.330'	-101° 21.690'
Repeater	CMD1	34° 55.374'	-101° 13.959'
Repeater	CMD2	34° 50.253'	-101° 15.190'
Repeater	CMD3	35° 10.697'	-101° 21.661'

[[Branch Break
)) Division Break
● Drop Point
● Dip Site
⊕ Helispot
R Repeater
 Completed Line
 Completed Dozer Line
 R-R-R Road as Completed Line
 Proposed Dozer Line
 Planned Fire Line
 Primary Limited Access
 Primary US & State Highways
 Secondary State & County
 Roads
 Uncontrolled Fire Edge
 Temporary Flight Restriction



Information shown is based on the best available data at the time of map production.
 Perimeter from satellite interpretation and fixed wing flight.
 Latest intel: 20180514 @ 0117
 20180515 @ 1728
 Map Datum: NAD83 Feet
 Author: SA Red Team
 0 1 2 4 Miles