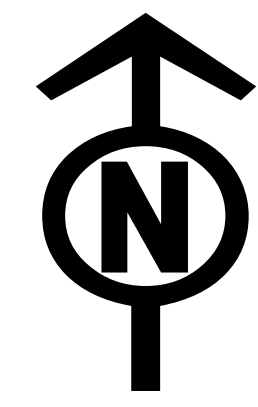




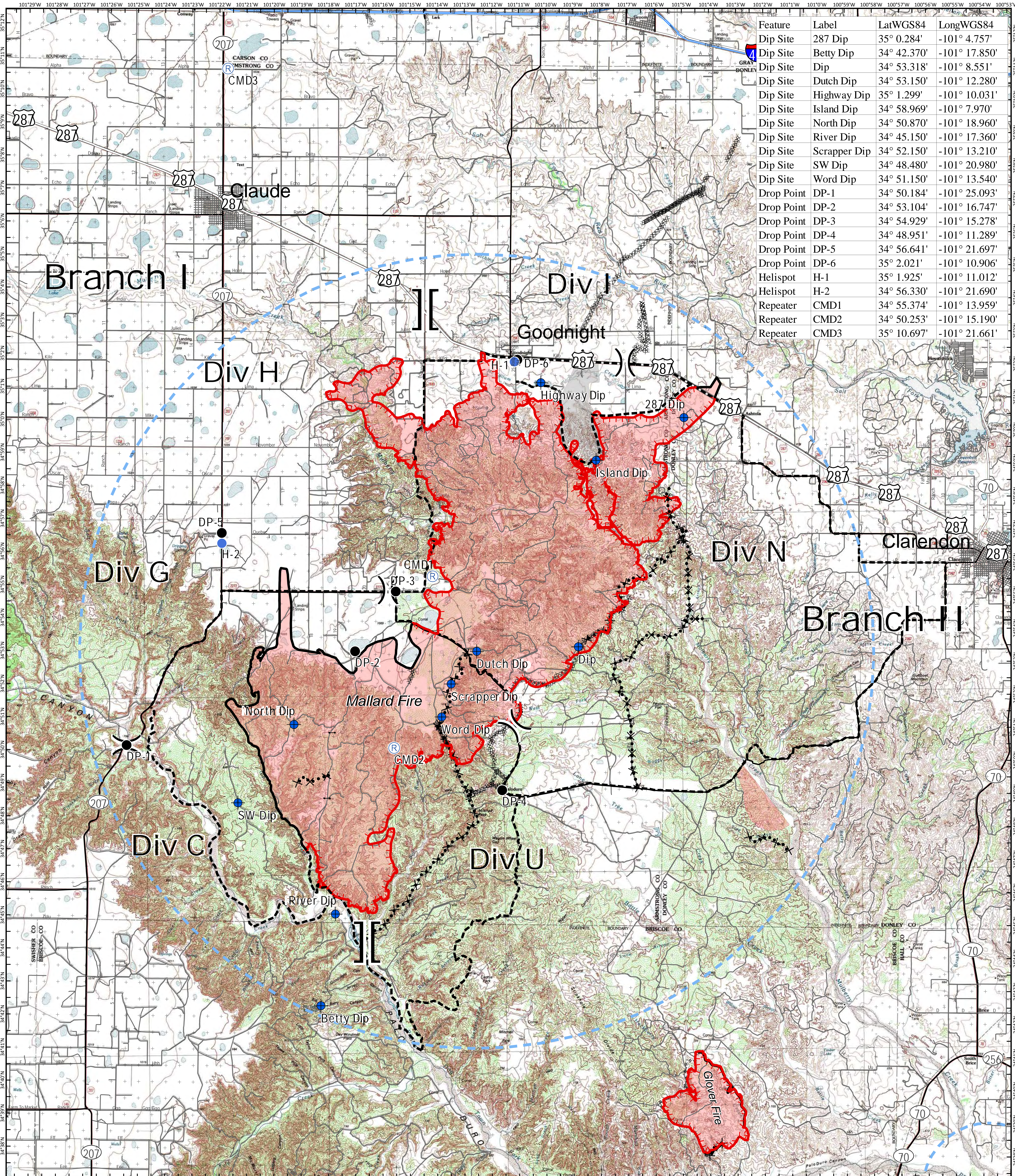
Air Operations Map

Mallard Fire TX-TXS-180461

Approximate Acreage: 75,425



5/16/2018



Feature	Label	LatWGS84	LongWGS84
Dip Site	287 Dip	35° 0.284'	-101° 4.757'
Dip Site	Betty Dip	34° 42.370'	-101° 17.850'
Dip Site	Dip	34° 53.318'	-101° 8.551'
Dip Site	Dutch Dip	34° 53.150'	-101° 12.280'
Dip Site	Highway Dip	35° 1.299'	-101° 10.031'
Dip Site	Island Dip	34° 58.969'	-101° 7.970'
Dip Site	North Dip	34° 50.870'	-101° 18.960'
Dip Site	River Dip	34° 45.150'	-101° 17.360'
Dip Site	Scrapper Dip	34° 52.150'	-101° 13.210'
Dip Site	SW Dip	34° 48.480'	-101° 20.980'
Dip Site	Word Dip	34° 51.150'	-101° 13.540'
Drop Point	DP-1	34° 50.184'	-101° 25.093'
Drop Point	DP-2	34° 53.104'	-101° 16.747'
Drop Point	DP-3	34° 54.929'	-101° 15.278'
Drop Point	DP-4	34° 48.951'	-101° 11.289'
Drop Point	DP-5	34° 56.641'	-101° 21.697'
Drop Point	DP-6	35° 2.021'	-101° 10.906'
Helispot	H-1	35° 1.925'	-101° 11.012'
Helispot	H-2	34° 56.330'	-101° 21.690'
Repeater	CMD1	34° 55.374'	-101° 13.959'
Repeater	CMD2	34° 50.253'	-101° 15.190'
Repeater	CMD3	35° 10.697'	-101° 21.661'

- Drop Point
- Helispot
- Ⓡ Repeater
- Branch Break
- Division Break
- Ⓡ Dip Site
- Gate
- Uncontrolled Fire Edge
- Temporary Flight Restriction
- Completed Line
- Completed Dozer Line
- R-R-R Road as Completed Line
- Proposed Dozer Line
- Planned Fire Line
- Primary Limited Access
- Primary US & State Highways
- Secondary State & County
- Roads



Information shown is based on the best available data at the time of map production.

Perimeter from satellite interpretation and fixed wing flight.

Latest intel: 20180514 @ 0117

20180515 @ 1728
Map Datum: NAD83 Feet
Author: SA Red Team
0 1 2 4 Miles