

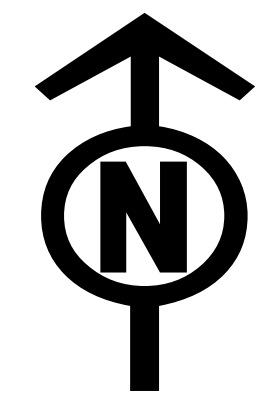


# Air Operations Map

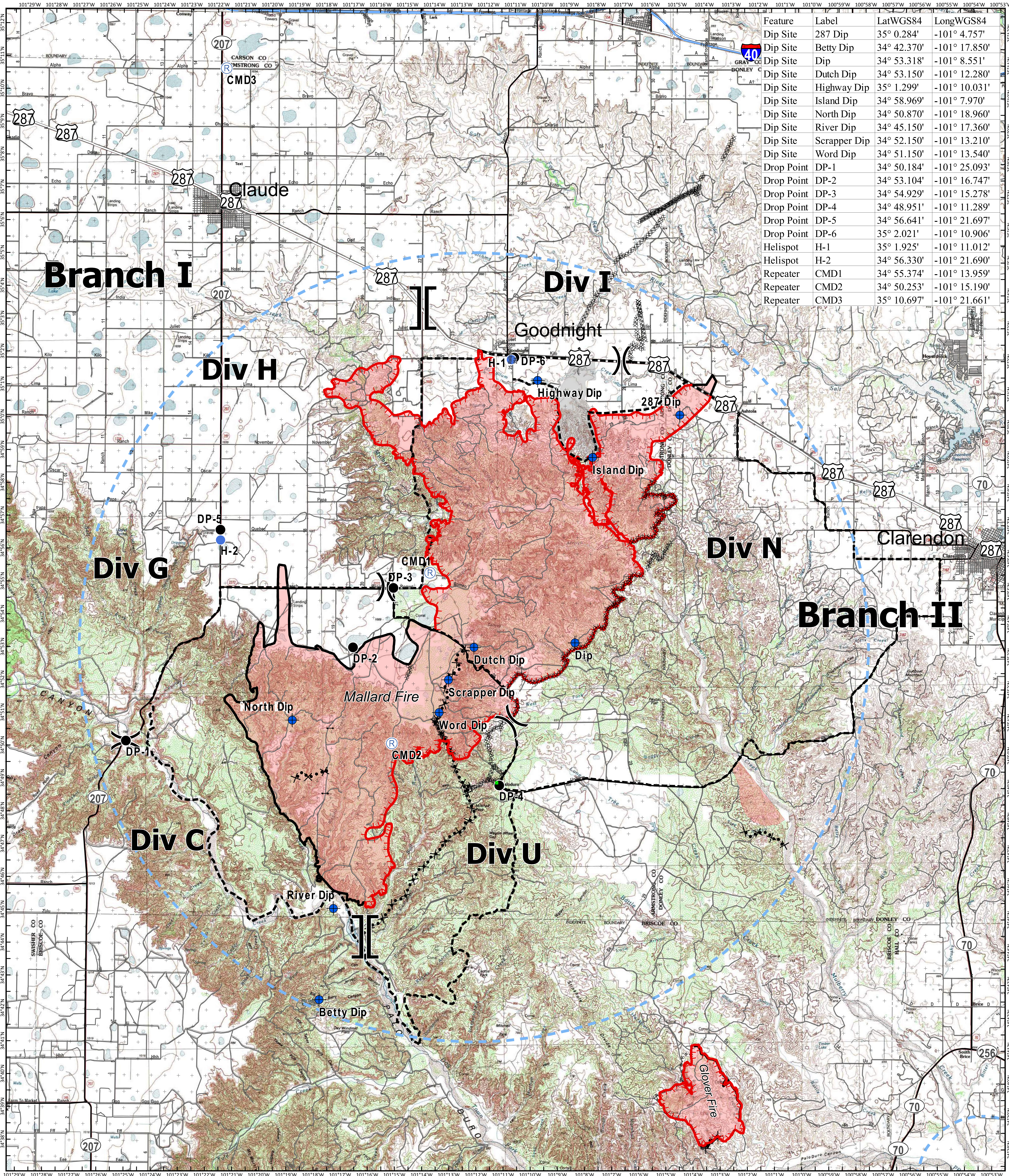
## Mallard Fire

TX-TXS-180461

Approximate Acreage: 75,425



5/16/2018



Feature	Label	LatWGS84	LongWGS84
Dip Site	287 Dip	35° 0.284'	-101° 4.757'
Dip Site	Betty Dip	34° 42.370'	-101° 17.850'
Dip Site	Dip	34° 53.318'	-101° 8.551'
Dip Site	Dutch Dip	34° 53.150'	-101° 12.280'
Dip Site	Highway Dip	35° 1.299'	-101° 10.031'
Dip Site	Island Dip	34° 58.969'	-101° 7.970'
Dip Site	North Dip	34° 50.870'	-101° 18.960'
Dip Site	River Dip	34° 45.150'	-101° 17.360'
Dip Site	Scrapper Dip	34° 52.150'	-101° 13.210'
Dip Site	Word Dip	34° 51.150'	-101° 13.540'
Drop Point	DP-1	34° 50.184'	-101° 25.093'
Drop Point	DP-2	34° 53.104'	-101° 16.747'
Drop Point	DP-3	34° 54.929'	-101° 15.278'
Drop Point	DP-4	34° 48.951'	-101° 11.289'
Drop Point	DP-5	34° 56.641'	-101° 21.697'
Drop Point	DP-6	35° 2.021'	-101° 10.906'
Helispot	H-1	35° 1.925'	-101° 11.012'
Helispot	H-2	34° 56.330'	-101° 21.690'
Repeater	CMD1	34° 55.374'	-101° 13.959'
Repeater	CMD2	34° 50.253'	-101° 15.190'
Repeater	CMD3	35° 10.697'	-101° 21.661'

- Drop Point
- Dip Site
- Helispot
- ⊙ Gate
- Ⓡ Repeater
- Landmark
- Uncontrolled Fire Edge
- Temporary Flight Restriction
- Completed Line
- Completed Dozer Line
- Road as Completed Line
- Proposed Dozer Line
- Planned Fire Line
- Primary US & State Highways
- Secondary State & County
- Roads
- Primary Limited Access

Branch Break

Division Break



Information shown is based on the best available data at the time of map production.

Perimeter from satellite interpretation and fixed wing flight.

Latest intel: 20180516 @ 0117

20180516 @ 0501  
Map Datum: NAD83 Feet  
Author: SA Red Team

0 1 2 4 Miles