

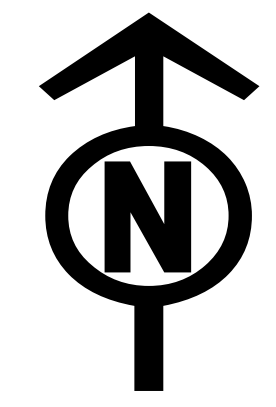


# Operations Map

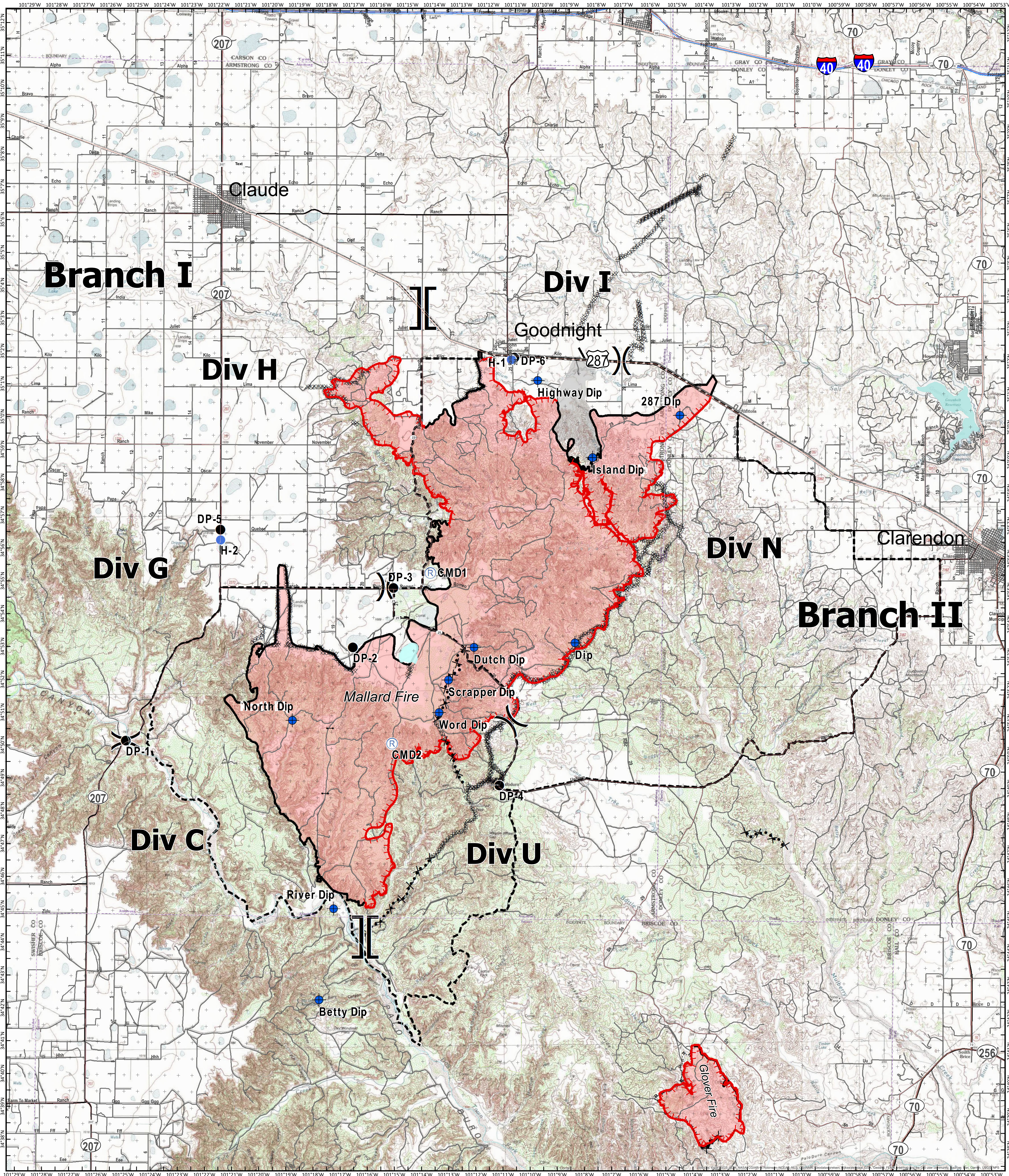
## Mallard Fire

TX-TXS-180461

Approximate Acreage: 75,425



5/16/2018



- Branch Break
- Drop Point
- Dip Site
- Completed Dozer Line
- Primary US & State Highways
- Division Break
- Hellspot
- Gate
- R-R-R Road as Completed Line
- Secondary State & County
- Repeater
- Uncontrolled Fire Edge
- Completed Line
- Proposed Dozer Line
- Planned Fire Line
- Roads
- World Hillshade
- Primary Limited Access



Information shown is based on the best available data at the time of map production.

Perimeter from satellite interpretation and fixed wing flight.

Latest intel: 20180514 @ 0117

20180515 @ 1030  
Map Datum: NAD83 Feet  
Author: SA Red Team

0 1 2 4 Miles