

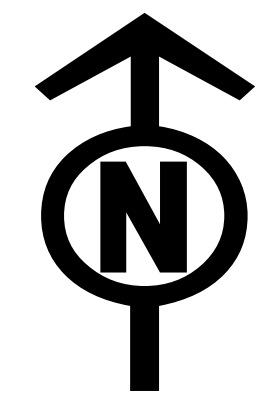


Operations Safety Map

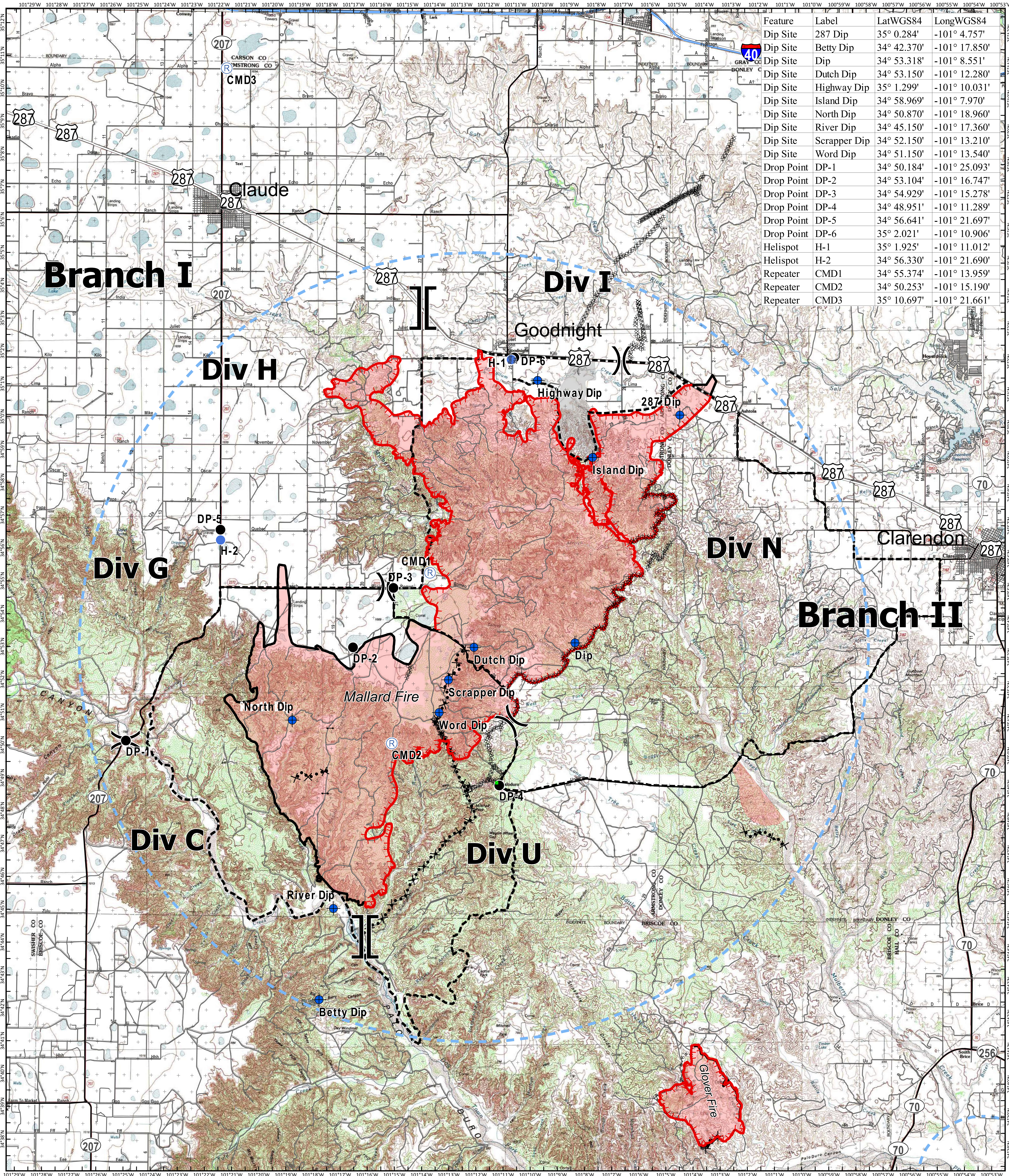
Mallard Fire

TX-TXS-180461

Approximate Acreage: 75,425



5/16/2018



| Feature | Label | LatWGS84 | LongWGS84 |
|------------|--------------|-------------|---------------|
| Dip Site | 287 Dip | 35° 0.284' | -101° 4.757' |
| Dip Site | Betty Dip | 34° 42.370' | -101° 17.850' |
| Dip Site | Dip | 34° 53.318' | -101° 8.551' |
| Dip Site | Dutch Dip | 34° 53.150' | -101° 12.280' |
| Dip Site | Highway Dip | 35° 1.299' | -101° 10.031' |
| Dip Site | Island Dip | 34° 58.969' | -101° 7.970' |
| Dip Site | North Dip | 34° 50.870' | -101° 18.960' |
| Dip Site | River Dip | 34° 45.150' | -101° 17.360' |
| Dip Site | Scrapper Dip | 34° 52.150' | -101° 13.210' |
| Dip Site | Word Dip | 34° 51.150' | -101° 13.540' |
| Drop Point | DP-1 | 34° 50.184' | -101° 25.093' |
| Drop Point | DP-2 | 34° 53.104' | -101° 16.747' |
| Drop Point | DP-3 | 34° 54.929' | -101° 15.278' |
| Drop Point | DP-4 | 34° 48.951' | -101° 11.289' |
| Drop Point | DP-5 | 34° 56.641' | -101° 21.697' |
| Drop Point | DP-6 | 35° 2.021' | -101° 10.906' |
| Helispot | H-1 | 35° 1.925' | -101° 11.012' |
| Helispot | H-2 | 34° 56.330' | -101° 21.690' |
| Repeater | CMD1 | 34° 55.374' | -101° 13.959' |
| Repeater | CMD2 | 34° 50.253' | -101° 15.190' |
| Repeater | CMD3 | 35° 10.697' | -101° 21.661' |

- Drop Point
- Dip Site
- Helispot
- Ⓜ Gate
- Ⓜ Landmark
- Ⓜ Repeater
- Ⓜ Uncontrolled Fire Edge
- Ⓜ Temporary Flight Restriction
- Completed Line
- Ⓜ Completed Dozer Line
- Ⓜ Road as Completed Line
- Ⓜ Proposed Dozer Line
- Ⓜ Planned Fire Line
- Ⓜ Primary Limited Access
- Primary US & State Highways
- Secondary State & County
- Roads

[[Branch Break
)) Division Break



Information shown is based on the best available data at the time of map production.
 Perimeter from satellite interpretation and fixed wing flight.
 Latest intel: 20180514 @ 0117
 20180516 @ 0447
 Map Datum: NAD83 Feet
 Author: SA Red Team
 0 1 2 4 Miles