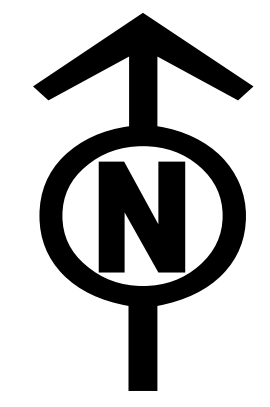




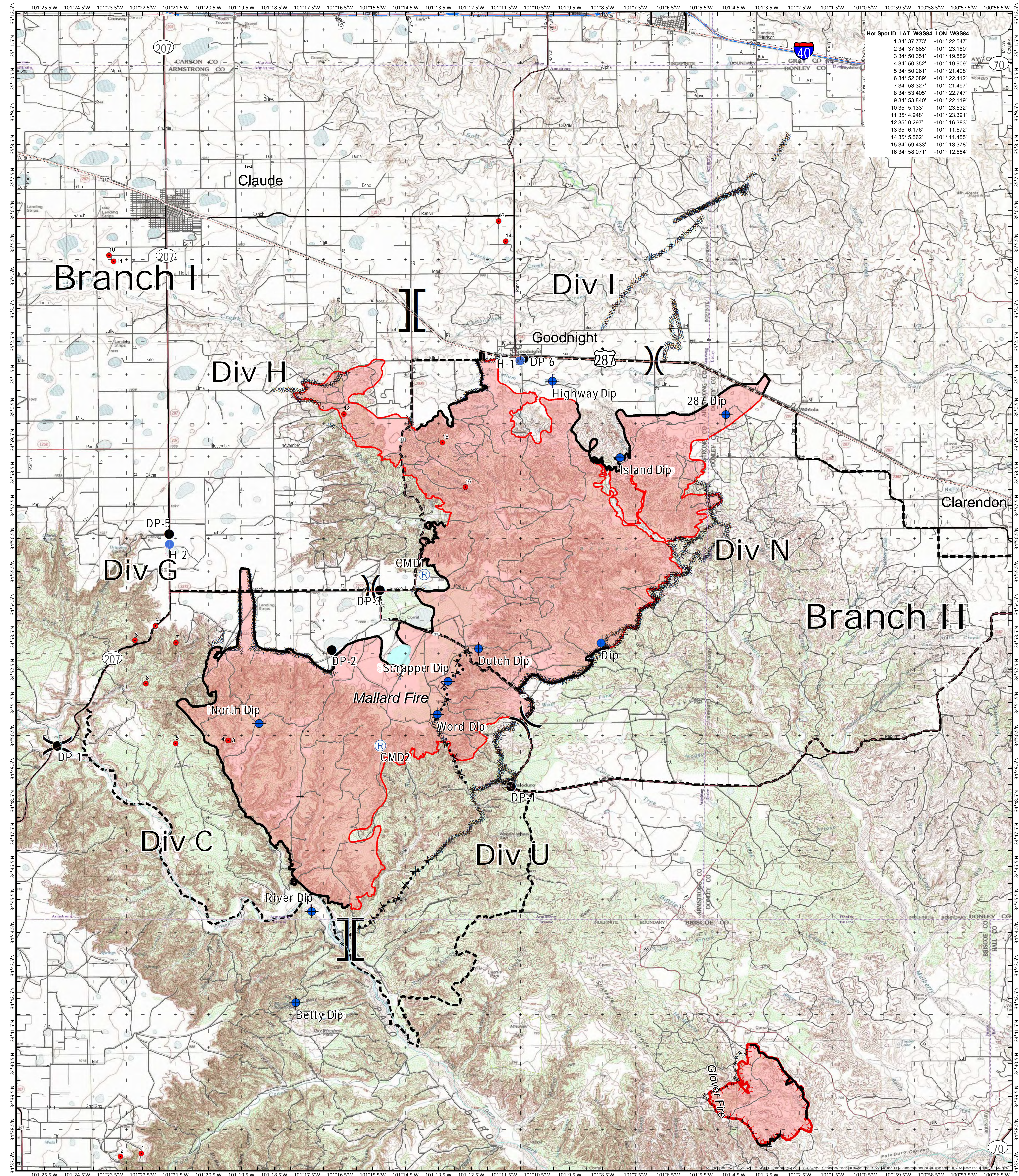
# IR - Operations Map

## Mallard Fire TX-TXS-180461

Approximate IR Acreage: 75,425



5/17/2018



Hot Spot ID	LAT_WGS84	LONG_WGS84
1	34° 58.071'	-101° 12.684'
2	34° 58.071'	-101° 12.684'
3	34° 58.071'	-101° 12.684'
4	34° 58.071'	-101° 12.684'
5	34° 58.071'	-101° 12.684'
6	34° 58.071'	-101° 12.684'
7	34° 58.071'	-101° 12.684'
8	34° 58.071'	-101° 12.684'
9	34° 58.071'	-101° 12.684'
10	34° 58.071'	-101° 12.684'
11	34° 58.071'	-101° 12.684'
12	34° 58.071'	-101° 12.684'
13	34° 58.071'	-101° 12.684'
14	34° 58.071'	-101° 12.684'
15	34° 58.071'	-101° 12.684'
16	34° 58.071'	-101° 12.684'
17	34° 58.071'	-101° 12.684'
18	34° 58.071'	-101° 12.684'
19	34° 58.071'	-101° 12.684'
20	34° 58.071'	-101° 12.684'
21	34° 58.071'	-101° 12.684'
22	34° 58.071'	-101° 12.684'
23	34° 58.071'	-101° 12.684'
24	34° 58.071'	-101° 12.684'
25	34° 58.071'	-101° 12.684'
26	34° 58.071'	-101° 12.684'
27	34° 58.071'	-101° 12.684'
28	34° 58.071'	-101° 12.684'
29	34° 58.071'	-101° 12.684'
30	34° 58.071'	-101° 12.684'
31	34° 58.071'	-101° 12.684'
32	34° 58.071'	-101° 12.684'
33	34° 58.071'	-101° 12.684'
34	34° 58.071'	-101° 12.684'
35	34° 58.071'	-101° 12.684'
36	34° 58.071'	-101° 12.684'
37	34° 58.071'	-101° 12.684'
38	34° 58.071'	-101° 12.684'
39	34° 58.071'	-101° 12.684'
40	34° 58.071'	-101° 12.684'
41	34° 58.071'	-101° 12.684'
42	34° 58.071'	-101° 12.684'
43	34° 58.071'	-101° 12.684'
44	34° 58.071'	-101° 12.684'
45	34° 58.071'	-101° 12.684'
46	34° 58.071'	-101° 12.684'
47	34° 58.071'	-101° 12.684'
48	34° 58.071'	-101° 12.684'
49	34° 58.071'	-101° 12.684'
50	34° 58.071'	-101° 12.684'

Branch Break  
 Division Break  
 IR Isolated Heat Source  
 Drop Point  
 Helispot  
 Repeater  
 Dip Site  
 Gate  
 Completed Line  
 Completed Dozer Line  
 R-R Road as Completed Line  
 Proposed Dozer Line  
 Planned Fire Line  
 Uncontrolled Fire Edge  
 Primary Limited Access  
 Primary US & State Highways  
 Secondary State & County  
 Roads  
 IR Heat Perimeter  
 Fires



Information shown is based on the best available data at the time of map production.

Perimeter from satellite interpretation and fixed wing flight.

Latest intel: 20180517 @ 0127

0 1 2 4 Miles

20180517 @ 0418  
Map Datum: NAD83 Feet  
Author: SA Red Team