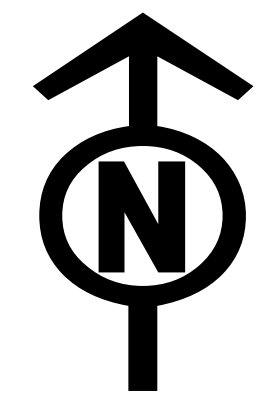




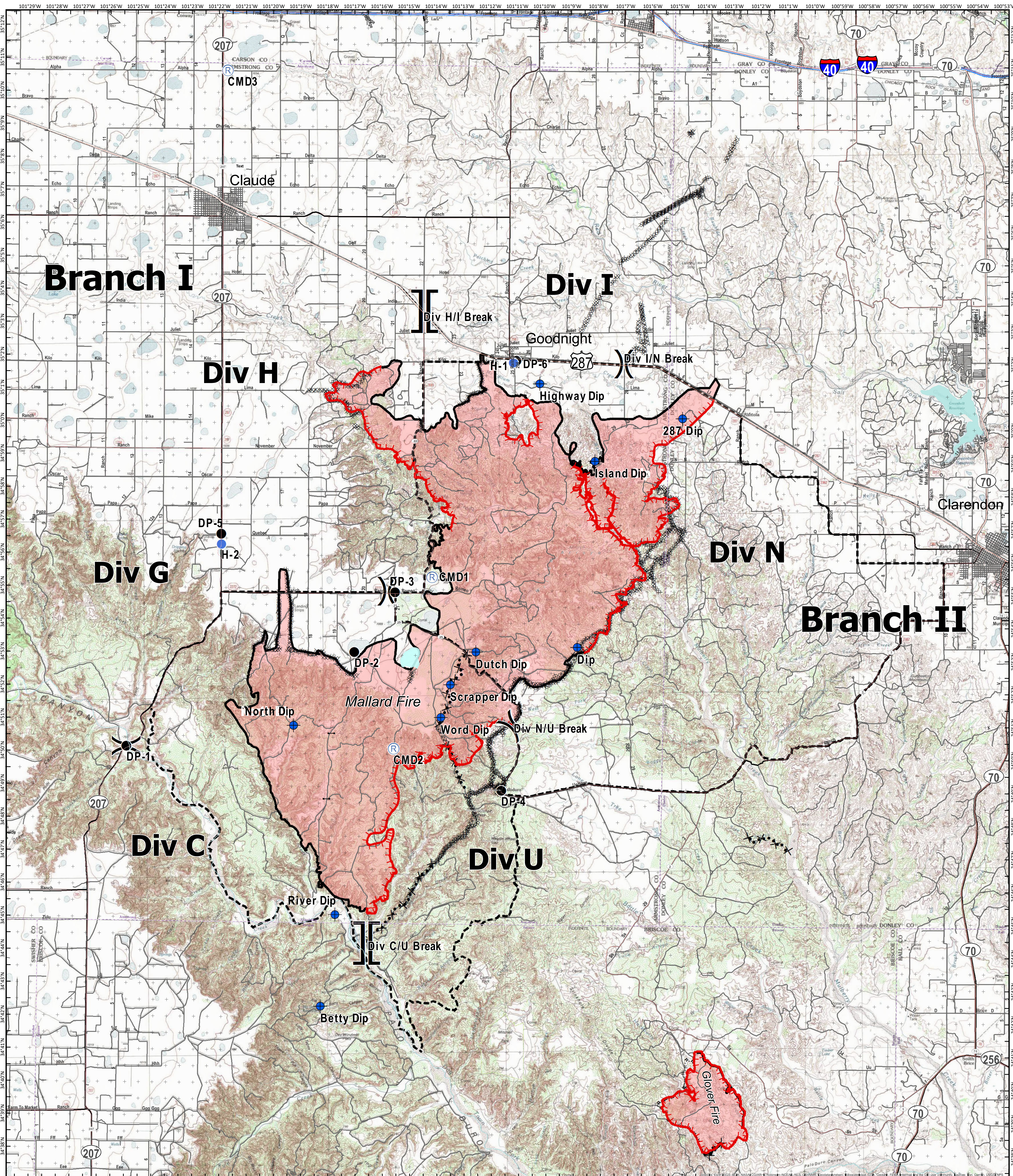
# Operations Map

## Mallard Fire TX-TXS-180461

Approximate Acreage: 75,530



5/17/2018



- Branch Break
- Drop Point
- Dip Site
- Repeater
- Uncontrolled Fire Edge
- Completed Line
- Planned Fire Line
- Primary Limited Access
- Completed Dozer Line
- Proposed Dozer Line
- Other
- Primary US & State Highways
- Secondary State & County
- Roads
- Fires



Information shown is based on the best available data at the time of map production.  
20180516 @ 1900  
Map Datum: NAD83 Feet  
Author: SA Red Team

Perimeter from satellite interpretation and fixed wing flight.  
0 1 2 4 Miles  
Latest intel: 20180515 @ 0117