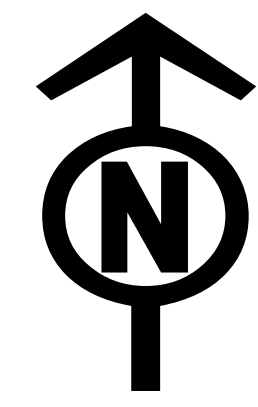




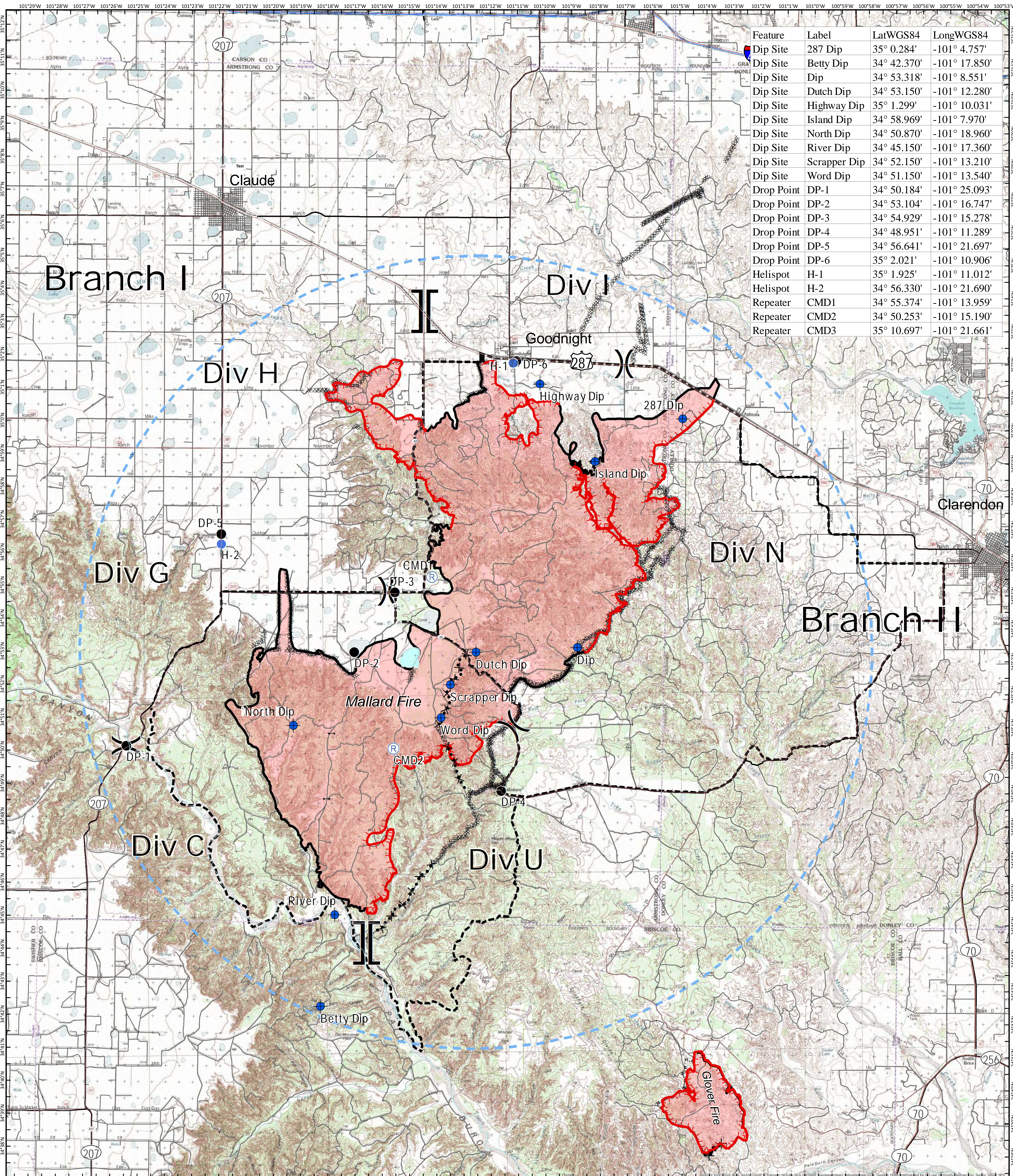
Operations Safety Map

Mallard Fire TX-TXS-180461

Approximate Acreage: 75,425



5/17/2018



Feature	Label	LatWGS84	LongWGS84
Dip Site	287 Dip	35° 0.284'	-101° 4.757'
Dip Site	Betty Dip	34° 42.370'	-101° 17.850'
Dip Site	Dip	34° 53.318'	-101° 8.551'
Dip Site	Dutch Dip	34° 53.150'	-101° 12.280'
Dip Site	Highway Dip	35° 1.299'	-101° 10.031'
Dip Site	Island Dip	34° 58.969'	-101° 7.970'
Dip Site	North Dip	34° 50.870'	-101° 18.960'
Dip Site	River Dip	34° 45.150'	-101° 17.360'
Dip Site	Scrapper Dip	34° 52.150'	-101° 13.210'
Dip Site	Word Dip	34° 51.150'	-101° 13.540'
Drop Point	DP-1	34° 50.184'	-101° 25.093'
Drop Point	DP-2	34° 53.104'	-101° 16.747'
Drop Point	DP-3	34° 54.929'	-101° 15.278'
Drop Point	DP-4	34° 48.951'	-101° 11.289'
Drop Point	DP-5	34° 56.641'	-101° 21.697'
Drop Point	DP-6	35° 2.021'	-101° 10.906'
Helispot	H-1	35° 1.925'	-101° 11.012'
Helispot	H-2	34° 56.330'	-101° 21.690'
Repeater	CMD1	34° 55.374'	-101° 13.959'
Repeater	CMD2	34° 50.253'	-101° 15.190'
Repeater	CMD3	35° 10.697'	-101° 21.661'

● Drop Point ● Dip Site — Completed Line — Primary US & State Highways
⊕ Helispot — Gate ⊗ Completed Dozer Line — Secondary State & County
Ⓡ Repeater — Uncontrolled Fire Edge ⊗ Road as Completed Line — Roads
⊗ Division Break — Temporary Flight Restriction ⊗ Proposed Dozer Line — Fires
⊗ Branch Break — Planned Fire Line — Primary Limited Access



Information shown is based on the best available data at the time of map production.
 Perimeter from satellite interpretation and fixed wing flight.
 Latest intel: 20180517 @ 0127

20180517 @ 0517
 Map Datum: NAD83 Feet
 Author: SA Red Team
 0 1 2 4 Miles