



# Operations Map

# Jones/Phillips Fire

Scenic Loop Complex

TX-TXS-180578

Approximate Acreage: 19,848

2018-06-08

104°20'0"W

104°19'0"W

104°18'0"W

104°17'0"W

104°16'0"W

104°15'0"W

30°46'0"N

30°45'0"N

30°44'0"N

30°43'0"N

30°42'0"N

30°41'0"N

30°46'0"N

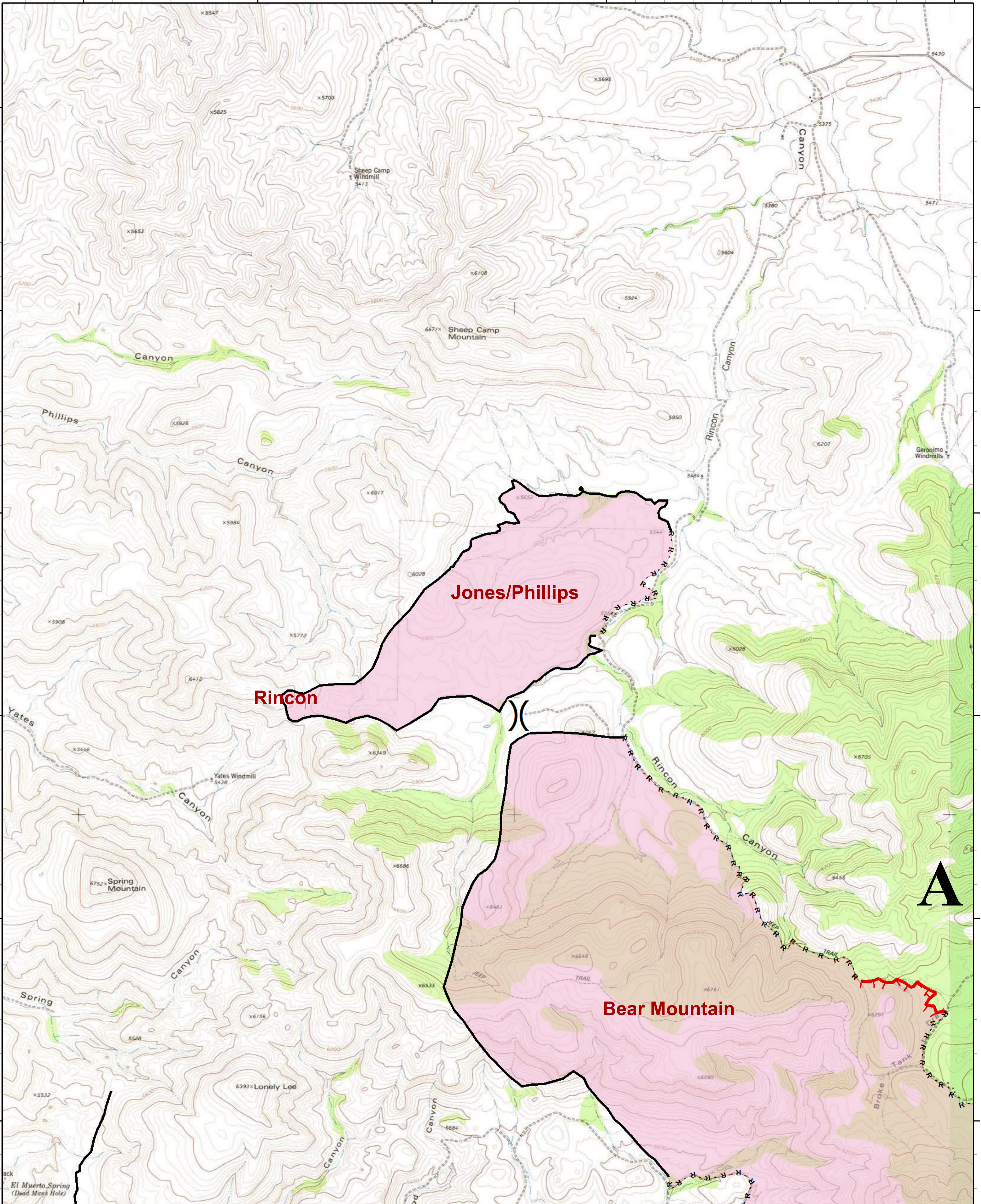
30°45'0"N

30°44'0"N

30°43'0"N

30°42'0"N

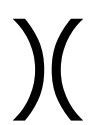
30°41'0"N



Jones/Phillips

Rincon

Bear Mountain



Division Break



Uncontrolled Fire Edge



Completed Line

R · R · Road as Completed Line

Wildfire Daily Fire Perimeter

0 0.175 0.35 0.7 Miles

0 0.175 0.35 0.7 Kilometers

Information shown is based on the best available data at the time of map production.

