



# Operations Map

# Long X2 Fire

Scenic Loop Complex

TX-TXS-180578

Approximate Acreage: 19,848

2018-06-08

104°13'0"W

104°12'0"W

104°11'0"W

104°10'0"W

104°9'0"W

104°8'0"W

30°45'0"N

30°44'0"N

30°43'0"N

30°42'0"N

30°41'0"N

30°40'0"N

30°45'0"N

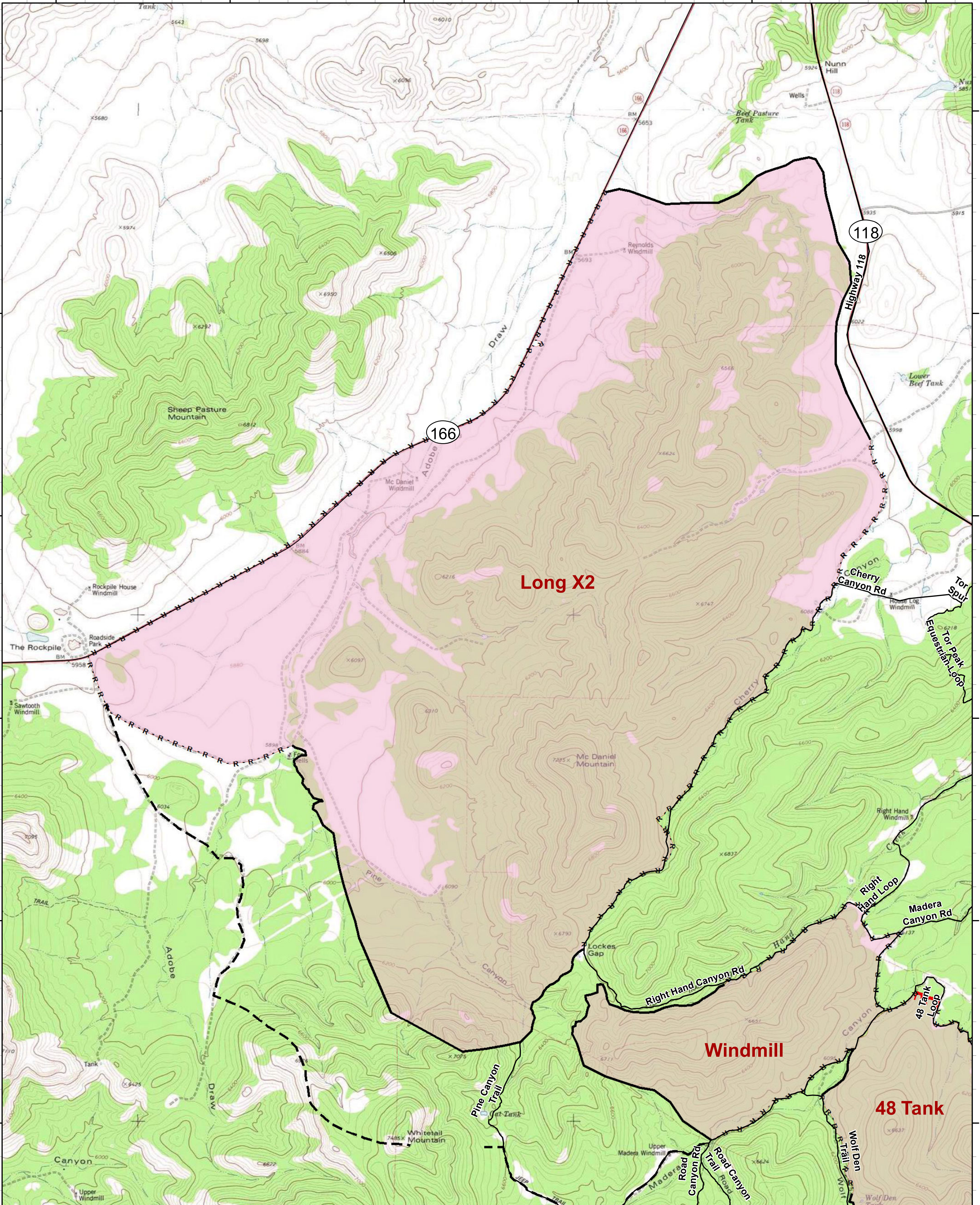
30°44'0"N

30°43'0"N

30°42'0"N

30°41'0"N

30°40'0"N



104°13'0"W

104°12'0"W

104°11'0"W

104°10'0"W

104°9'0"W

104°8'0"W

- Drop Point
- Uncontrolled Fire Edge
- Planned Fire Line
- Completed Line
- Wildfire Daily Fire Perimeter
- R · R · R Road as Completed Line

0 0.175 0.35 0.7 Miles

0 0.175 0.35 0.7 Kilometers

Information shown is based on the best available data at the time of map production.

