



104°13'0"W

104°12'0"W

104°11'0"W

104°10'0"W

104°9'0"W

104°8'0"W

30°45'0"N

30°44'0"N

30°43'0"N

30°42'0"N

30°41'0"N

30°40'0"N

30°45'0"N

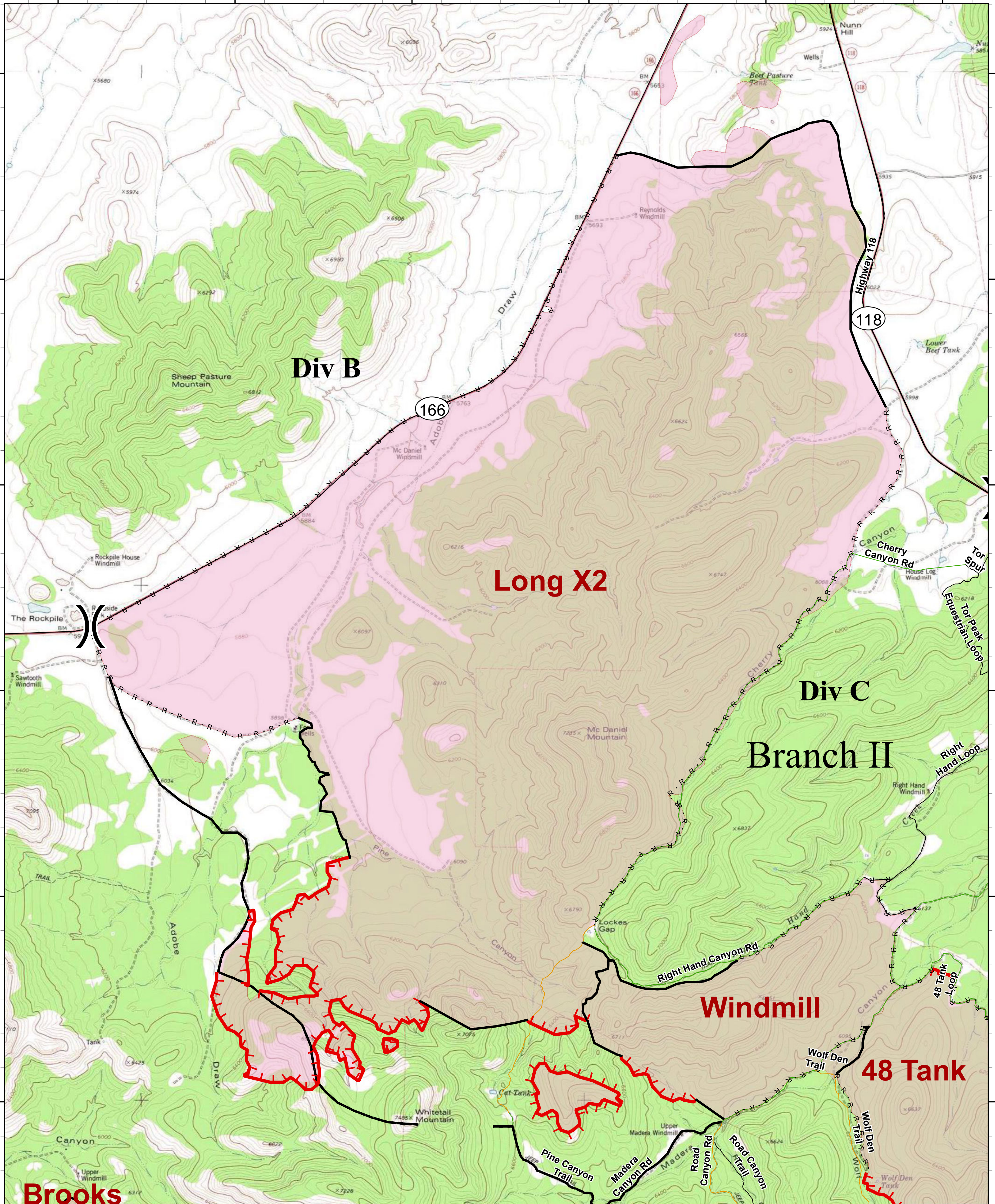
30°44'0"N

30°43'0"N

30°42'0"N

30°41'0"N

30°40'0"N



104°13'0"W

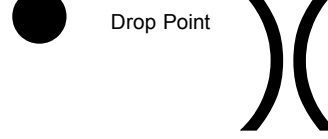
104°12'0"W

104°11'0"W

104°10'0"W

104°9'0"W

104°8'0"W

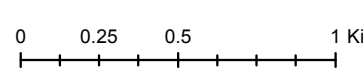
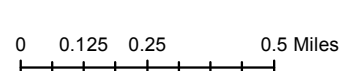


Uncontrolled Fire Edge (red dashed line with ticks)
Completed Line (solid black line)
Road as Completed Line (dashed line with 'R' markers)

Planned Fire Line (dashed line with dots)
Visitor_Use_Roads Trails (dashed line with 'R' markers)

2WD (green line)
UTV (orange line)
Wildfire Daily Fire Perimeter (pink shaded area)

Map Produced by Blue Team Sit Unit
2018-06-08



Information shown is based on the best available data at the time of map production.
Infrared data acquired 6/8/2018 @ 0330 hrs.

