



104°11'0"W

104°10'0"W

104°9'0"W

104°8'0"W

104°7'0"W

30°43'0"N
30°42'0"N
30°41'0"N
30°40'0"N
30°39'0"N
30°38'0"N

30°43'0"N
30°42'0"N
30°41'0"N
30°40'0"N
30°39'0"N
30°38'0"N

Long X2

Div C

Branch II

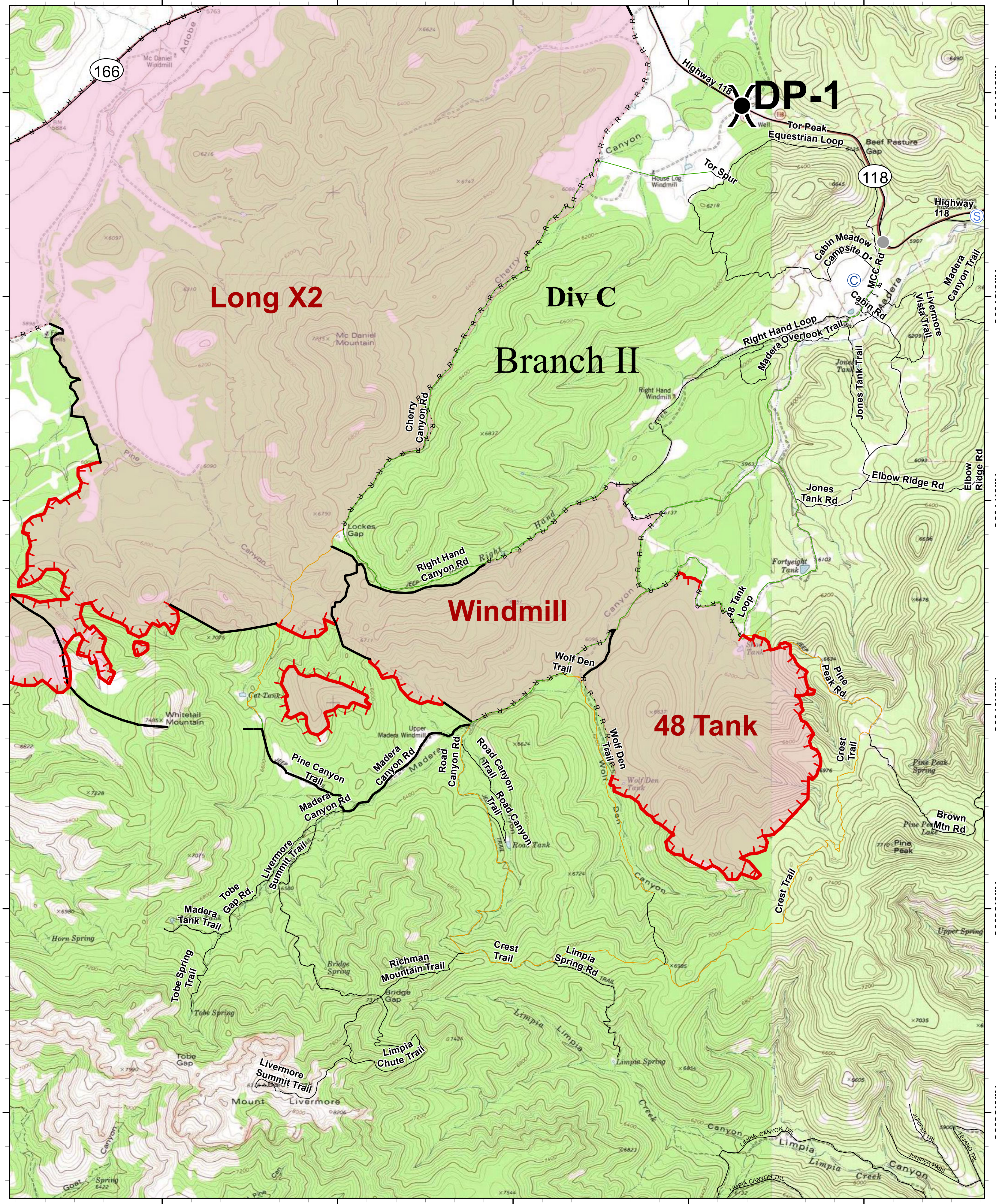
Windmill

48 Tank

DP-1

166

118



- ⊙ Camp
- Other
- Drop Point
- ⊙ Staging Area

- ⎓ Division Break
- ▬ Completed Line
- R · R · Road as Completed Line
- ▬ Uncontrolled Fire Edge
- ▬ Planned Fire Line
- ▬ DMR_Roads

Map Produced by Blue Team Sit Unit
2018-06-08

Information shown is based on the best available data at the time of map production.
Infrared data acquired 6/8/2018 @ 0330 hrs.

0 0.125 0.25 0.5 Miles

0 0.25 0.5 1 Kilometers