

Collector Workflow for taking the **TXIAM 2018 General Incident Response (Offline)** map offline for data collection during Project fires. This workflow is intended to be used for project fires where cell service is limited. Otherwise, use the (Online) map for near-real time collection.

Note: Pictures are from iOS. Androids and Windows tablets and smart phones have the same functions.

For account setup email lssimtgis@gmail.com with your O# , Name and phone#.

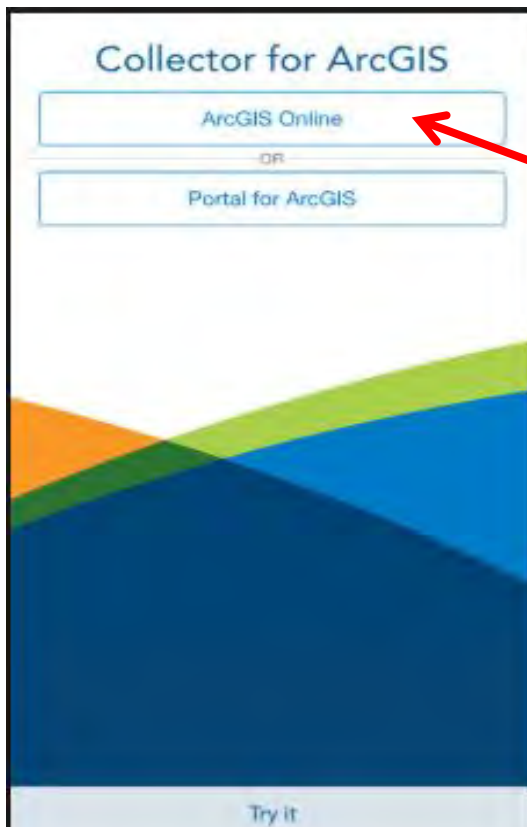
Step 1: Download Collector for ArcGIS



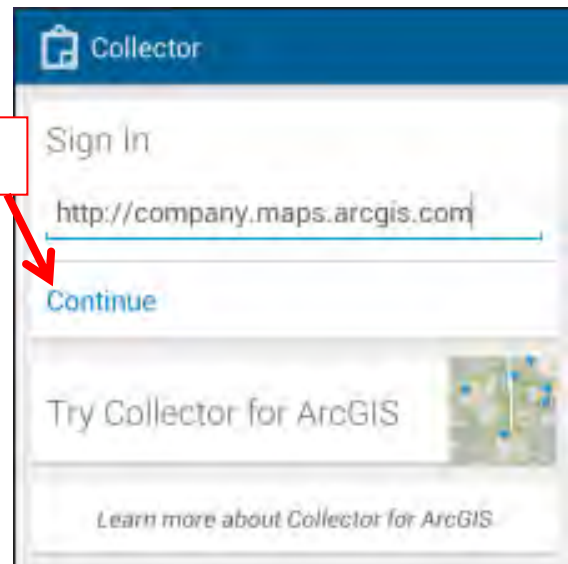
Step 2: Login screen iOS

or

Login screen Android



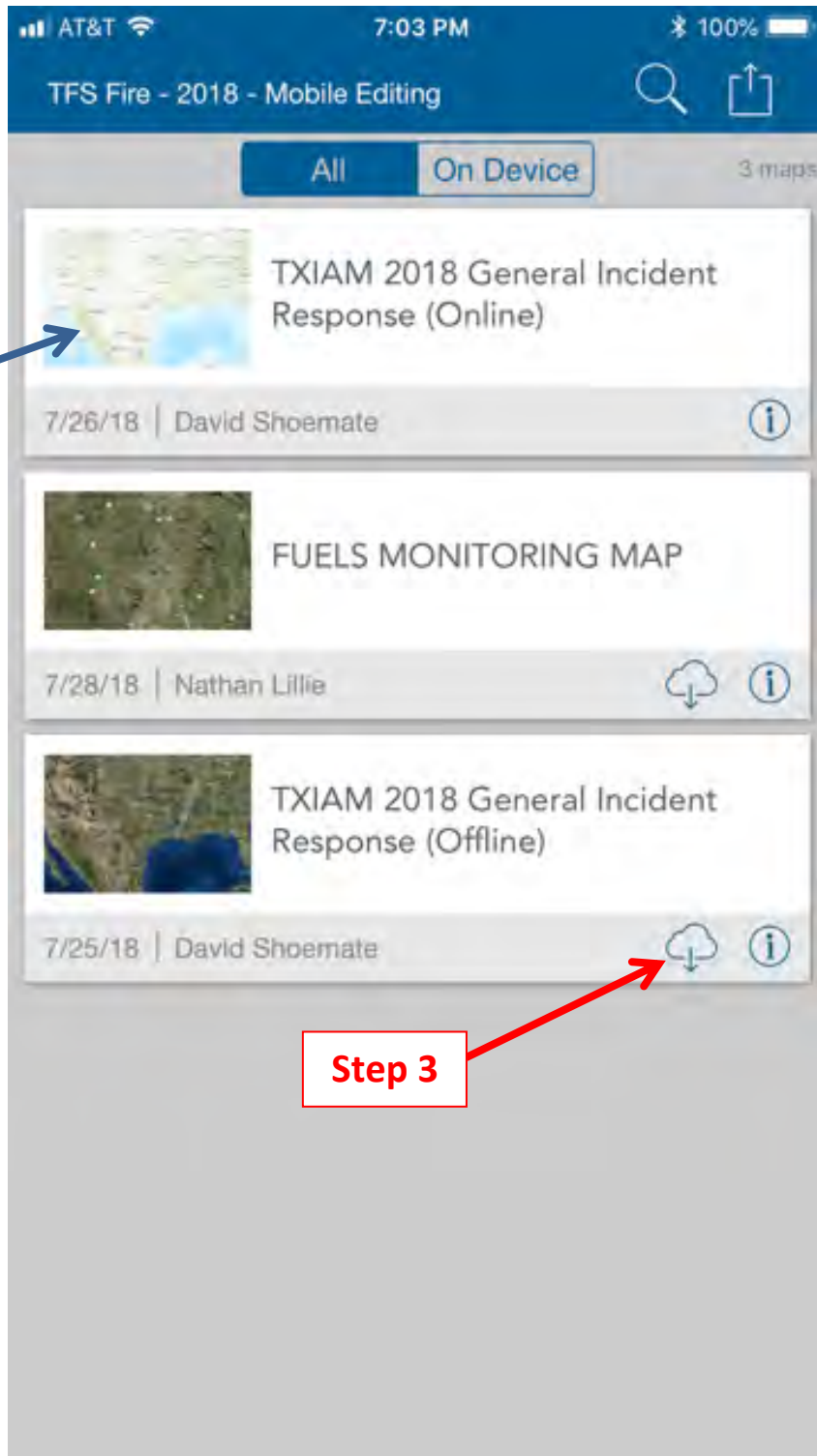
Step 2



Main Maps page

Step 3: To take the (Offline) Map offline click on the CLOUD WITH THE ARROW

For near
real-time
mapping



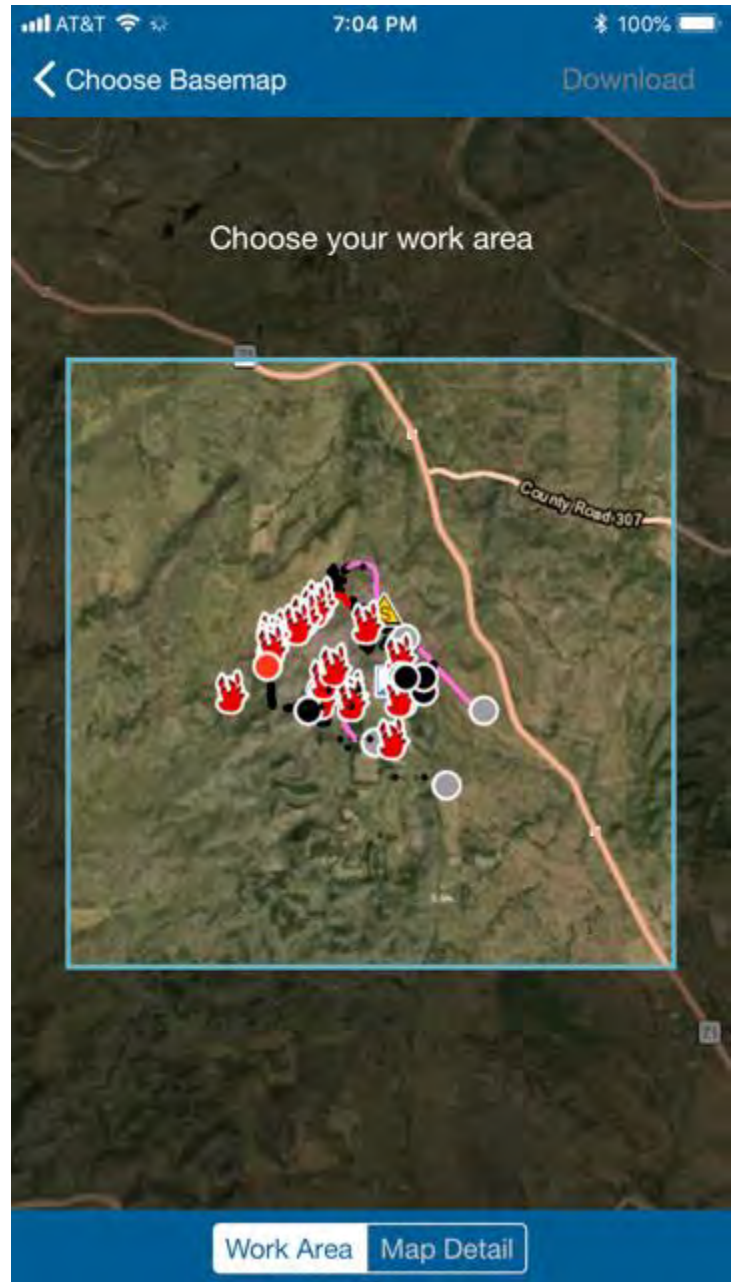
Step 3

Step 4: WORK AREA – Define the area that you will be responding to that might have limited cell service. Zoom to general area but be aware of size limits (ex. 10 miles area). Next click Map Details.

Example of defined WORK AREA



Step 4



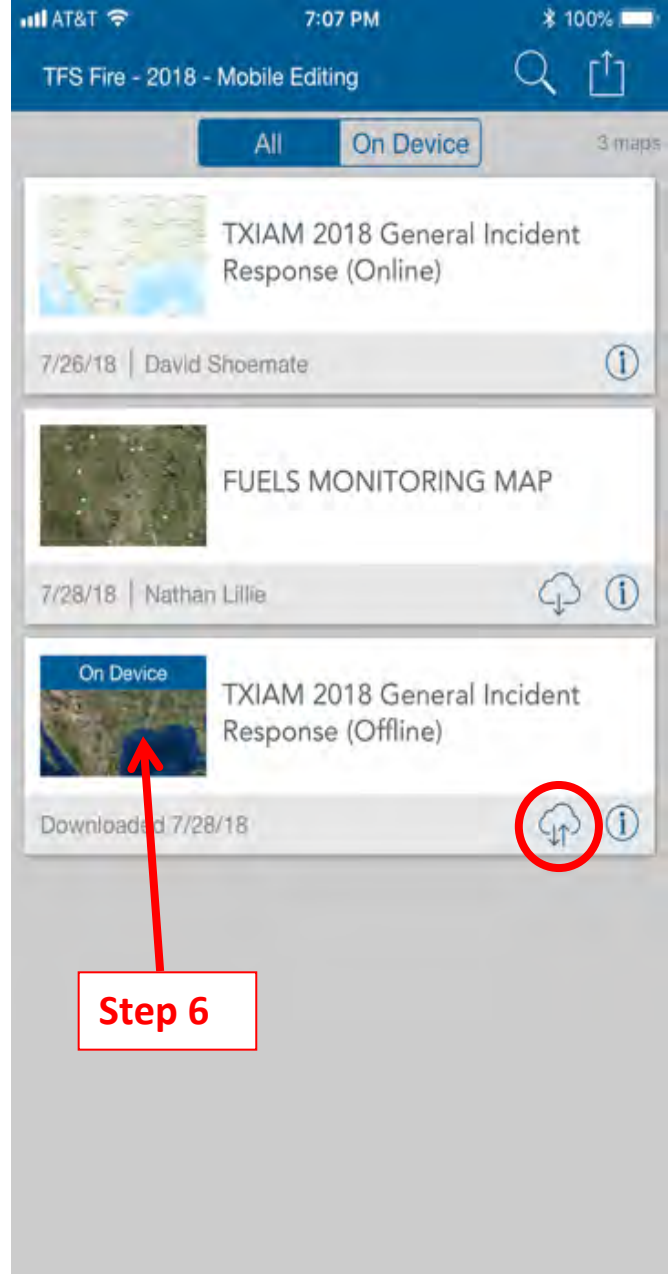
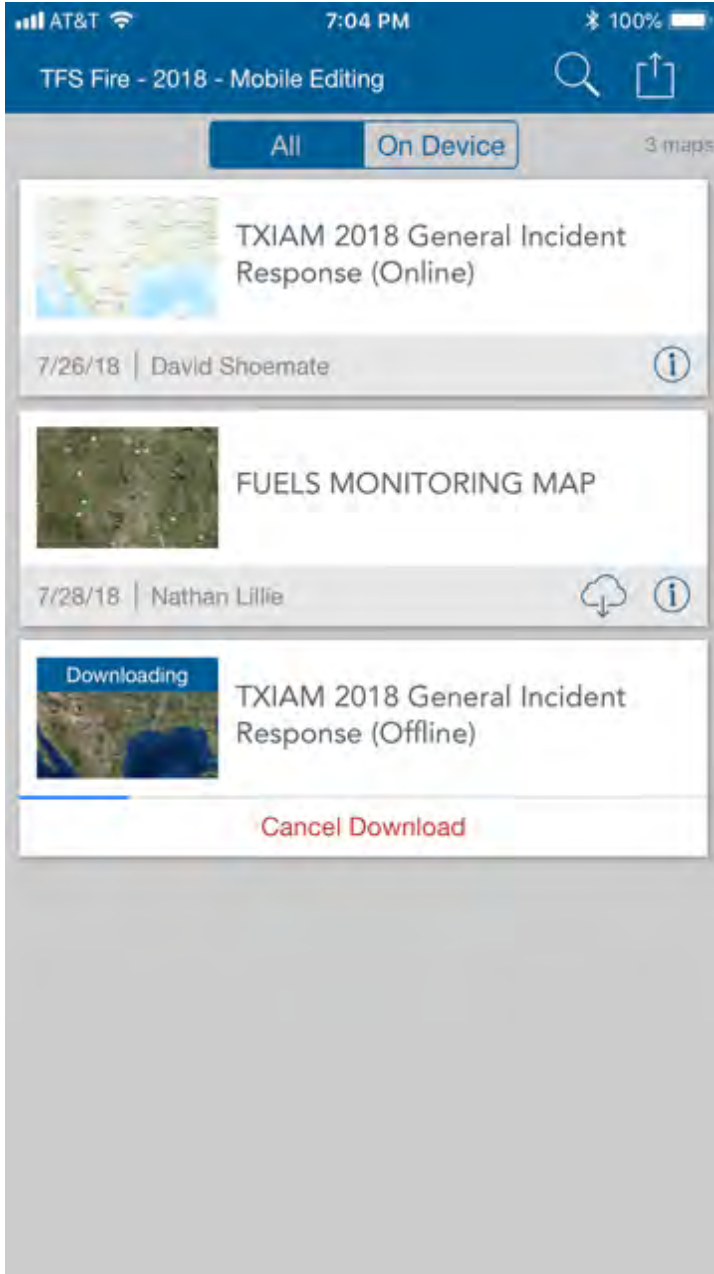
Step 5: MAP DETAILS – Define zoom level scale. Watch the (Estimated size : 21 MB) try to keep it below 100 MB. Then click download.



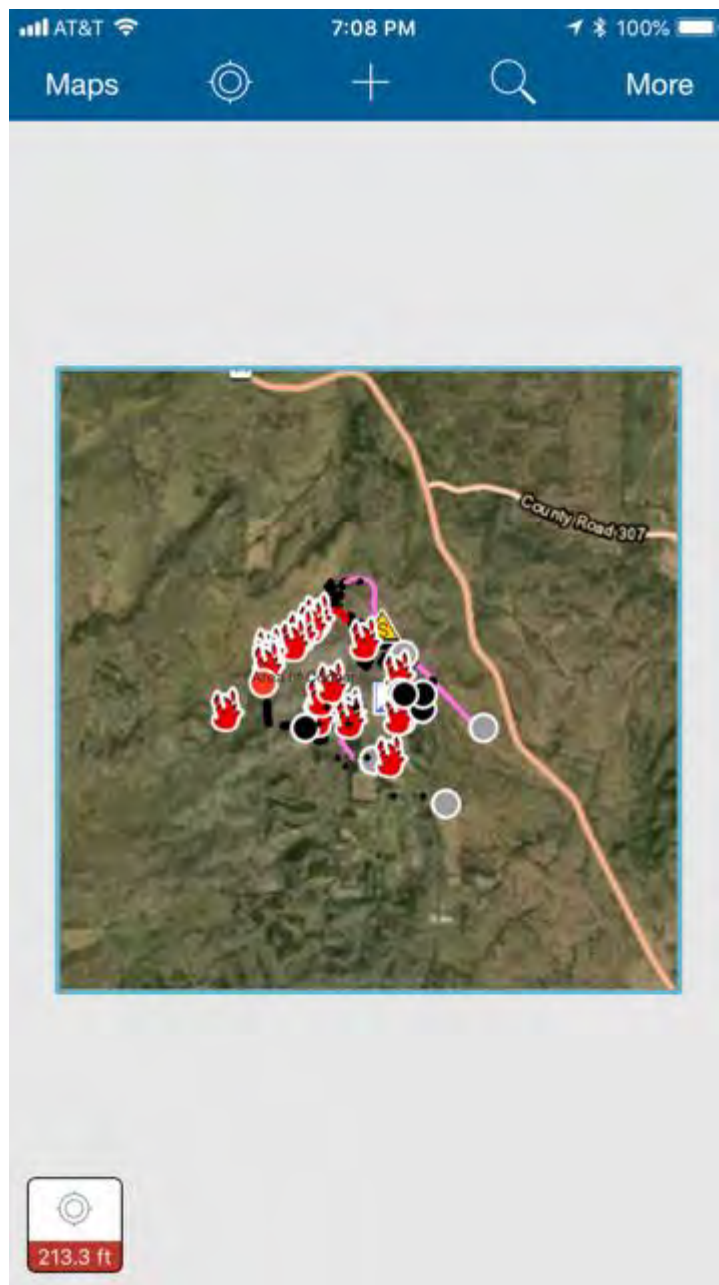
Step 5

Map is downloading

Step 6: Once map is complete there will be two arrows over the cloud. Click on the map picture to open the map.

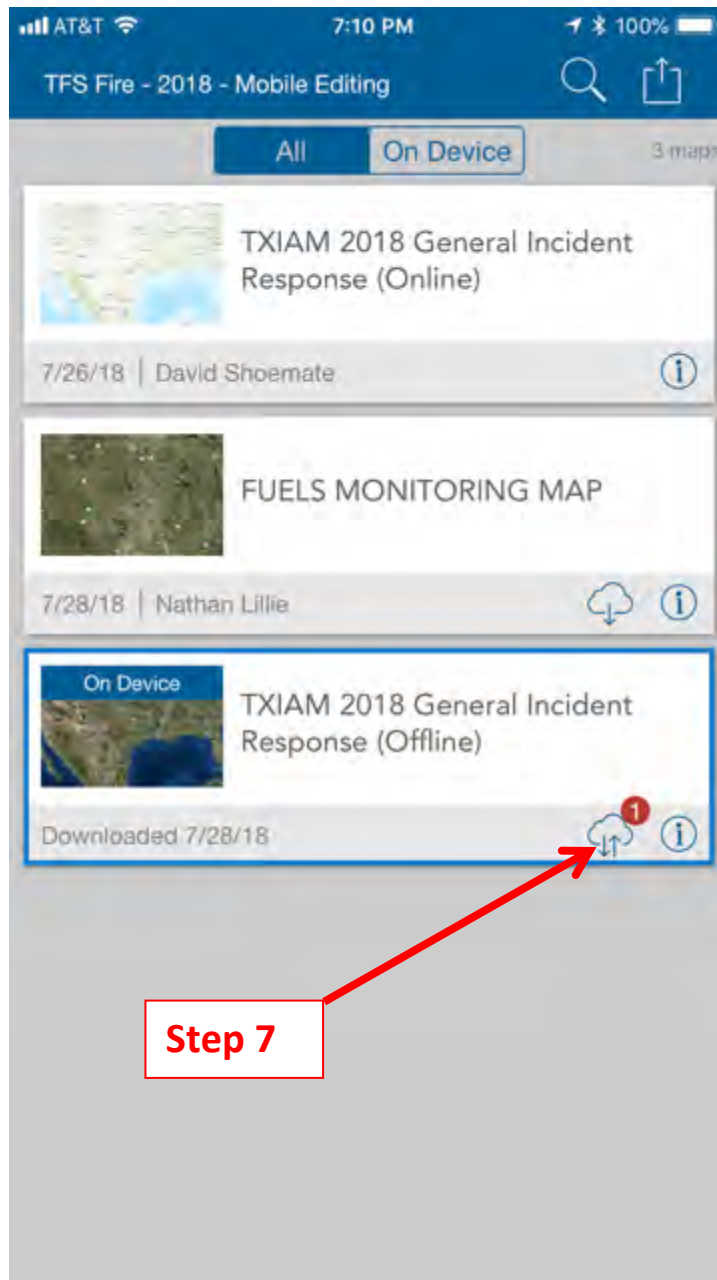


The map will be restricted to the WORK AREA that you defined in **Step 4**.



Step 7: After you have collected data you will need to sync the map so everyone can see your edits. Go back to the main maps page. A red dot with a number will indicate the amount of edits to be synced. This sync will push your edits and pull anyone else's edits down so you can see those on your offline map.

**TRY TO SYNC PERIODICALLY THROUGHOUT THE DAY WHEN SERVICE ALLOWS WHILE ON THE FIRE. DROP A POINT CALLED (TELEPHONE) IF YOU FIND SERVICE ON THE FIRE WHERE YOU ARE ABLE TO SYNC. THIS WILL ALLOW OTHER FIRE PERSONNEL TO FIND A LOCATION WITH CELL SERVICE.*



After the Project fire is complete **AND/OR** you need to add another Project fire for offline use.

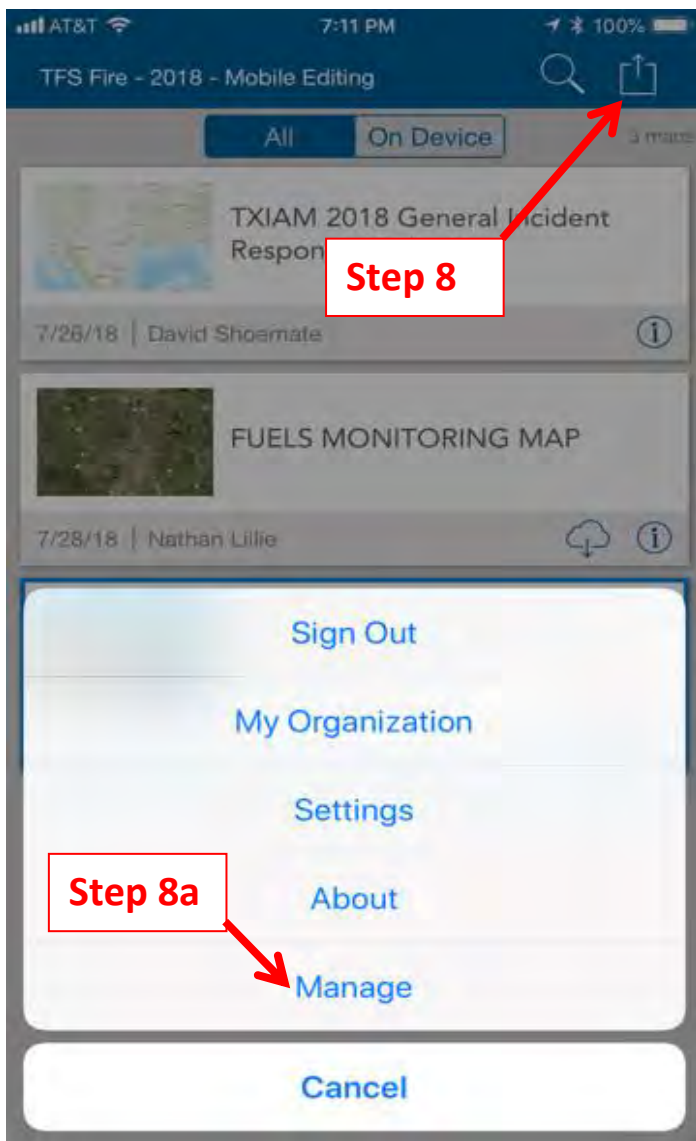
Step 8: Click the box with the arrow. From the Main Map Page

Step 8a: Click Manage

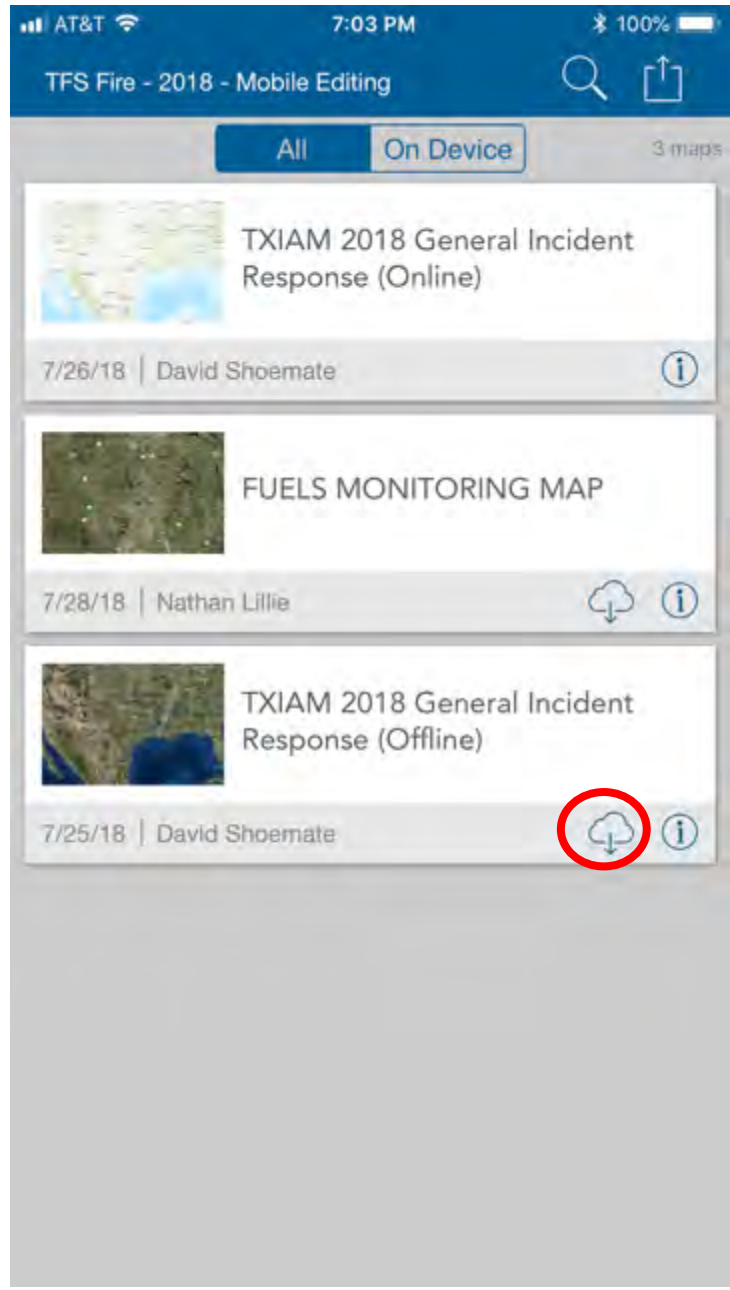
Step 8b: Click Remove (make sure the Maps tab at the top is Blue).

Step 9 - OPTION A: **Remove features only** if you want to keep the Project fire basemap (WORK AREA) for the current project fire.

Step 9 - OPTION B: **Remove features and basemap** if you are completely done with that Project fire (WORK AREA).



Map should show only one arrow which indicates that you can now download another offline area for use.



Training videos and documentation:

https://sites.google.com/a/firenet.gov/gisstraining/home/agol_collector/fielddatacollection

General How-to Slides

https://drive.google.com/file/d/17t_6Q6QHp7aLgO86cJLCNj5BXH5IXfoX/view

iOS quick guide




https://drive.google.com/file/d/1Jc29QM_FNW0iWnvZqBPAROVc99m7BwnB/view

Android quick guide

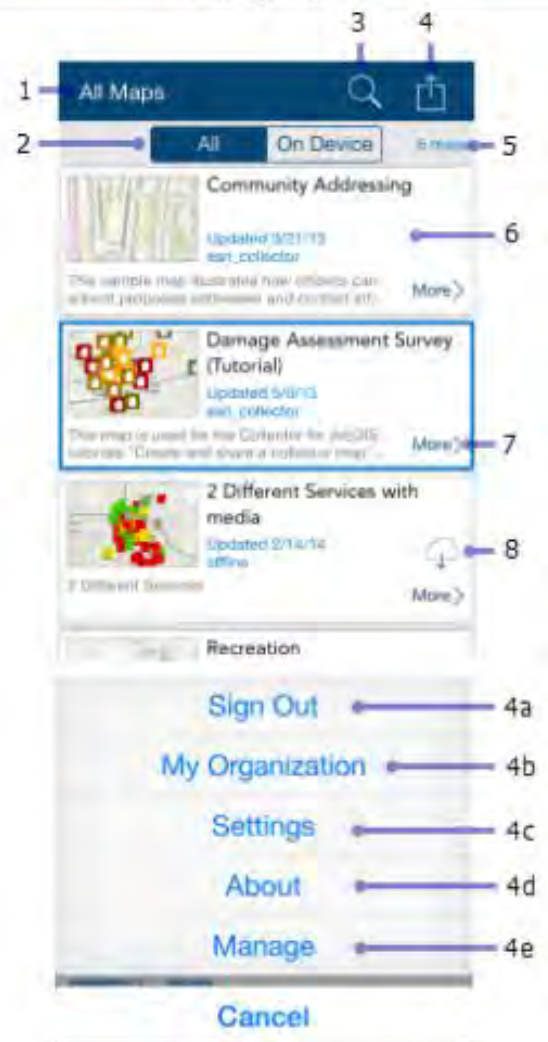
https://drive.google.com/file/d/1RE0pMVcLeApsclZXw86UWjnkx_91DWVf/view


Map – iOS



1. **Maps**—Goes to the [Map Gallery](#).
2. **My Location** tool—Uses your device's GPS to show your location on the map.
 - The icon  indicates your location does not display on the map.
 - Once your location is turned on, the icon  indicates your location displays on the map and is kept centered.
 - Once you pan the map while your location displays, the icon  indicates your location displays on the map but isn't kept centered.
3. **Layers** tool—Displays the layers in map. Turn on/off.
4. **Collect new** tool—Adds a feature.
5. **Measure** tool—Calculate length & area (variety of units)
6. **Search** tool—address, coordinates, etc...
7. **More**—Expands the toolbar and shows the additional tools available. The screen capture shows the toolbar expanded, showing all available tools.
8. **Bookmarks** tool
9. **Basemaps** tool—Change basemap
10. **Map**—pan, zoom in/out
11. (a and b) **Features**—add, update, delete
12. **Results**—The results generated when you tap a feature or place
13. **Result action**—Display a menu of the actions available on a tap or search result.

Gallery - iOS



1. **Gallery**—Describes the group of maps you see.
 - All Maps
 - My Maps
 - A group name
2. **Gallery filter**—Shows all maps or offline maps
3. **Search** maps in Gallery
4. **Action (menu)**—Provides access to:
 - Sign Out
 - My Org—View information about your org.
 - Settings—View/update the account settings.
 - About—View the version of Collector
 - Manage—Manage maps offline maps.
5. **Map count**—The number of maps in the Gallery.
6. **Map card**—Tap the map thumbnail to open the map.
7. **More**—Reload the map if it is open, show map's details.
8. **Download**— Take your map offline.