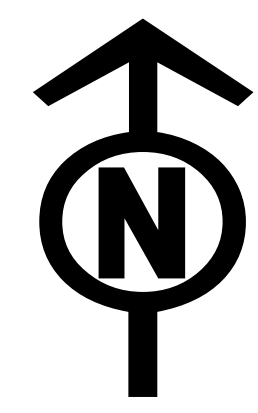


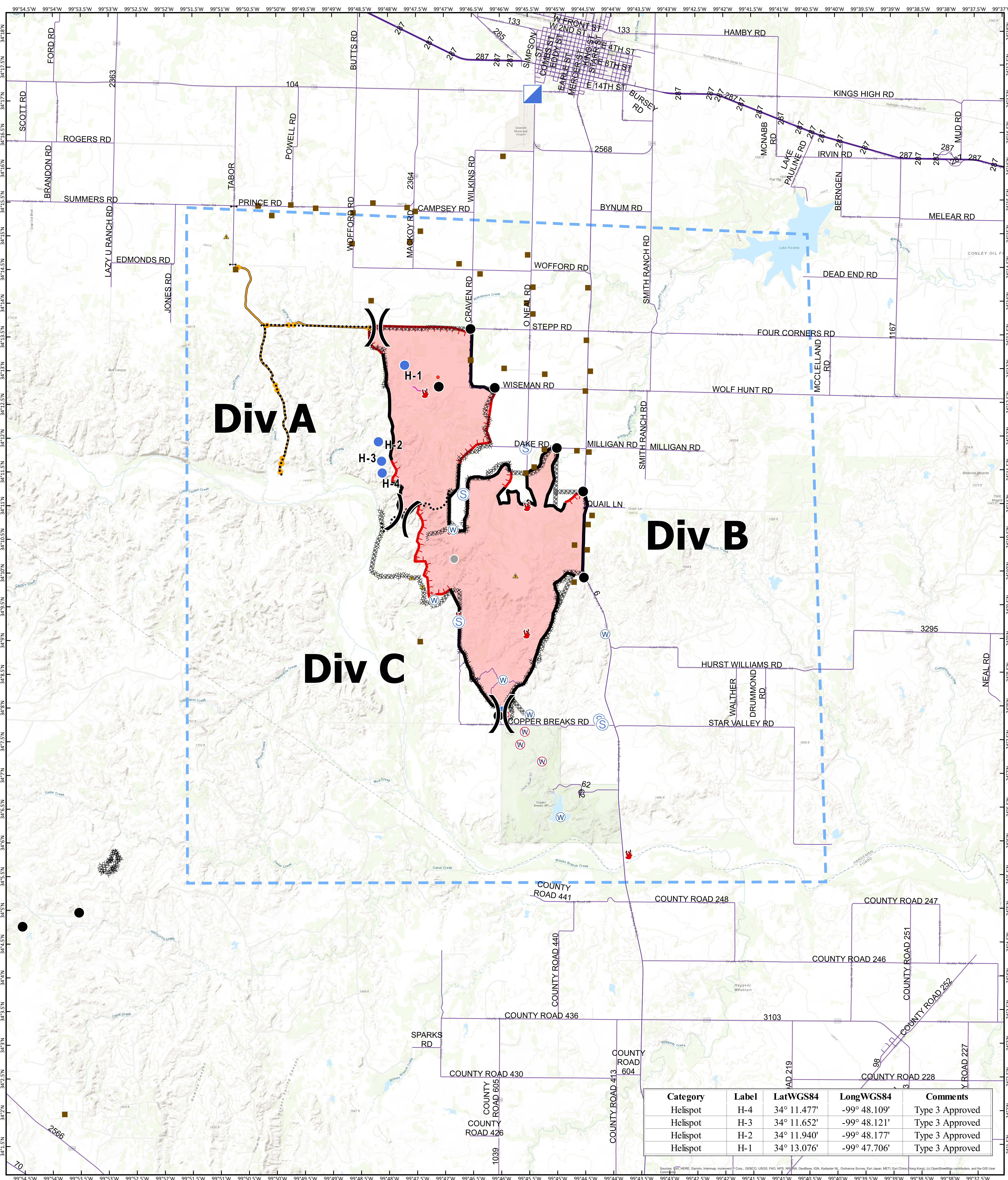


Air - Operations Map

Copper Breaks TX-TXS-190226



8/22/2019



Category	Label	LatWGS84	LongWGS84	Comments
Helispot	H-4	34° 11.477'	-99° 48.109'	Type 3 Approved
Helispot	H-3	34° 11.652'	-99° 48.121'	Type 3 Approved
Helispot	H-2	34° 11.940'	-99° 48.177'	Type 3 Approved
Helispot	H-1	34° 13.076'	-99° 47.706'	Type 3 Approved

Branch Break (Double line symbol)

Division Break (Line with double arrows symbol)

- Structure Protection (Black square)
- Drop Point (Black circle)
- Helispot (Blue circle)
- Fire Location (Red flame)
- Fire Origin (Red circle with dot)
- Gate (Line with arrow)
- Hot Spot (Red dot)
- Incident Command Post (Blue square)
- Safety Zone (Yellow triangle)
- Staging Area (Blue circle with S)
- Water Source (Blue circle with W)
- Restricted Water Source (Red circle with W)
- Other (Grey circle)
- Roadway (Blue line)
- Temporary Flight Restriction (Blue dashed line)
- Uncontrolled Fire Edge (Red jagged line)
- Completed Line (Black line)
- Completed Dozer Line (Black line with cross-hatch)
- R - R - R Road as Completed Line (Red line)
- Fire Break Planned or Incomplete (Dotted line)
- Planned Secondary Line (Dashed line)
- Management Action Point (Yellow diamond)
- Other (Pink line)
- Unknown (Pink line)



Information shown is based on the best available data at the time of map production.

Perimeter from satellite interpretation and fixed wing flight.

Latest intel: 20190820 @ 1545

0 0.5 1 2 Miles

20190821 @ 1848
Map Datum: NAD83 Feet
Author: SA Red Team