

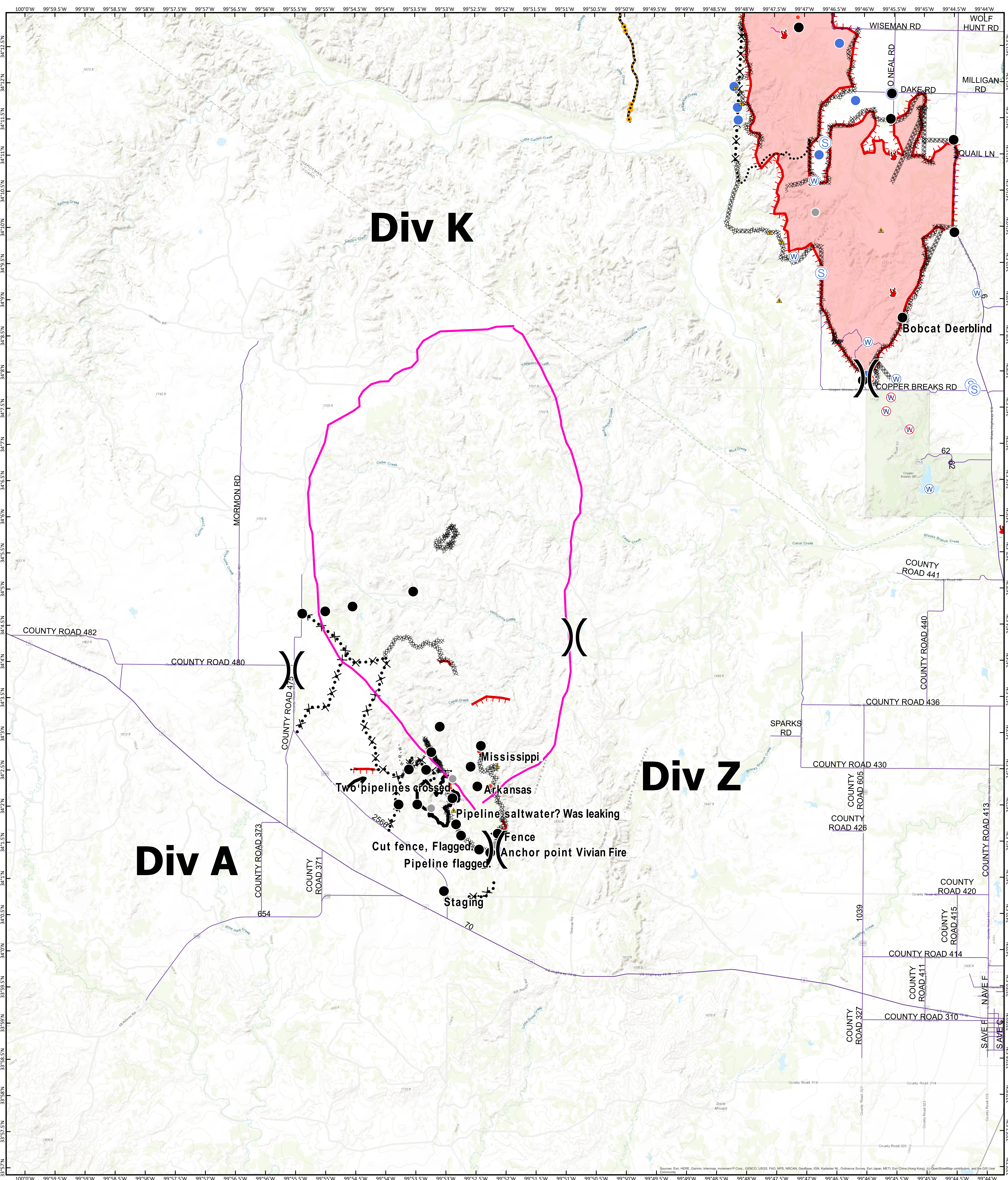


Briefing Map

Vivian TX-TXS-190###



8/22/2019



Div K

Div Z

Div A

Mississippi

Arkansas

Pipeline saltwater? Was leaking

Cut fence, Flagged

Pipeline flagged

Anchor point Vivian Fire

Staging

Two pipelines crossed

- Branch Break
- Division Break

- Drop Point
- Helispot
- Fire Location
- Fire Origin
- Gate
- Hot Spot
- Safety Zone
- Staging Area
- Water Source
- Restricted Water Source
- Other

- Vivian Proximity
- Roadway
- Uncontrolled Fire Edge
- Completed Line
- Completed Dozer Line
- R - R - R Road as Completed Line
- Proposed Dozer Line
- Fire Break Planned or Incomplete
- Wildfire Daily Perimeter
- Planned Secondary Line
- Aerial Hazard
- Management Action Point
- Other
- Unknown



Information shown is based on the best available data at the time of map production.

Perimeter from satellite interpretation and fixed wing flight.

Latest intel: 20190821 @ 1815

20190821 @ 2342
Map Datum: NAD83 Feet
Author: SA Red Team

0 0.5 1 2 Miles