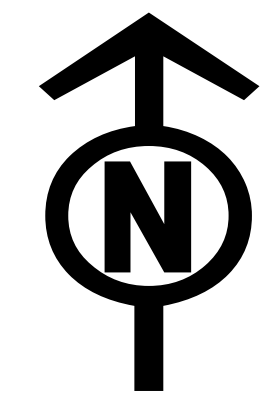


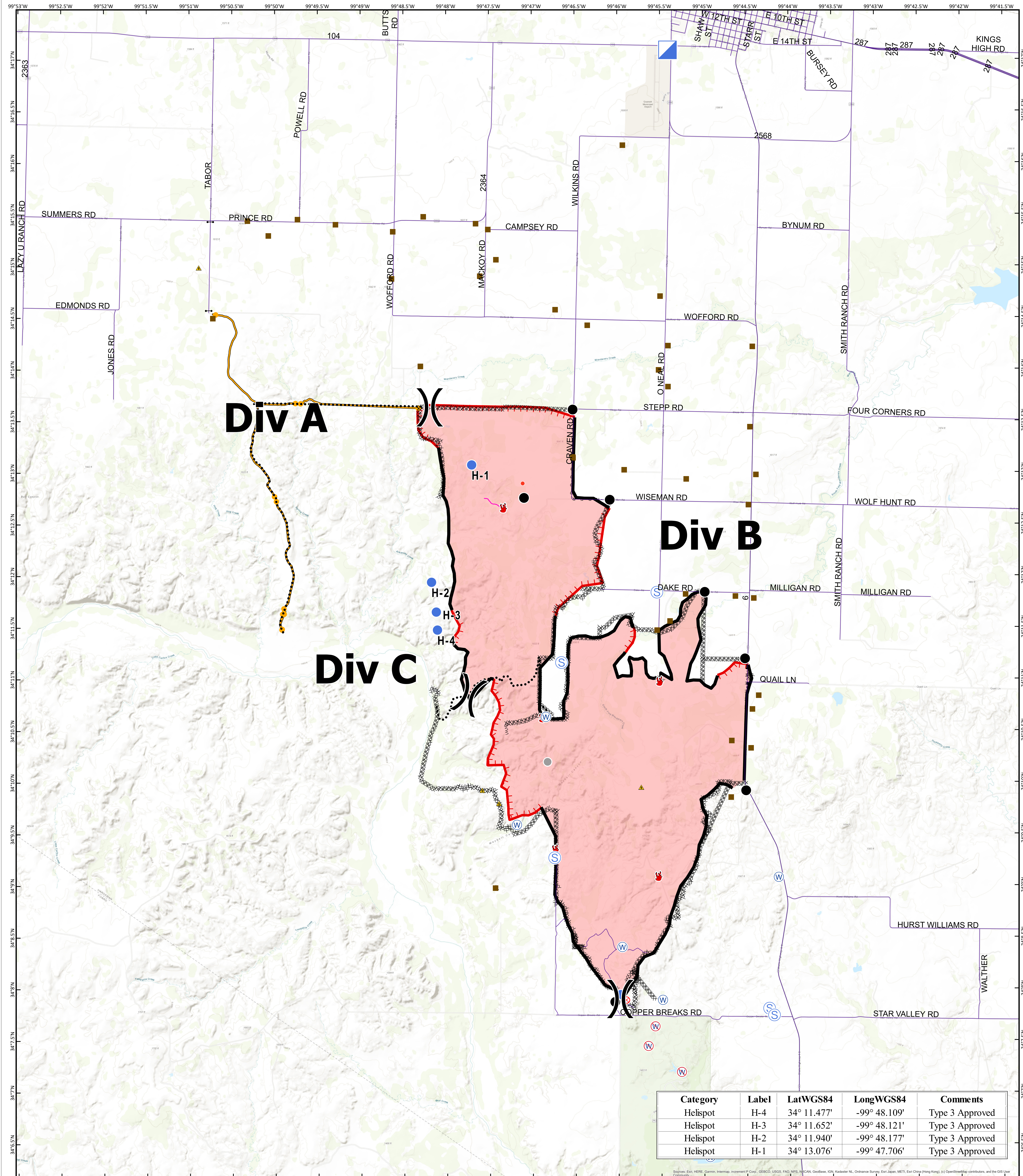


Operations Map

Copper Breaks TX-TXS-190226



8/22/2019



Category	Label	LatWGS84	LongWGS84	Comments
Helispot	H-4	34° 11.477'	-99° 48.109'	Type 3 Approved
Helispot	H-3	34° 11.652'	-99° 48.121'	Type 3 Approved
Helispot	H-2	34° 11.940'	-99° 48.177'	Type 3 Approved
Helispot	H-1	34° 13.076'	-99° 47.706'	Type 3 Approved

- Branch Break
- Division Break
- Structure Protection
- Drop Point
- Helispot
- Fire Location
- Fire Origin
- Gate
- Incident Command Post
- Safety Zone
- Staging Area
- Water Source
- Restricted Water Source
- Other
- Roadway
- Uncontrolled Fire Edge
- Completed Line
- Completed Dozer Line
- R - R - R Road as Completed Line
- Fire Break Planned or Incomplete
- Planned Secondary Line
- Management Action Point
- Other
- Unknown



Information shown is based on the best available data at the time of map production.
Perimeter from satellite interpretation and fixed wing flight.
Latest intel: 20190821 @ 1815

0 0.375 0.75 1.5 Miles

20190821 @ 2028
Map Datum: NAD83 Feet
Author: SA Red Team