

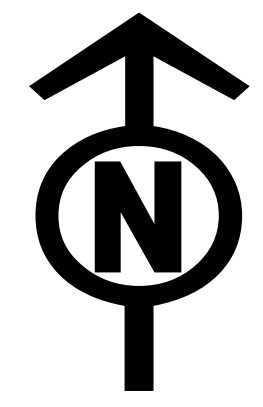


Briefing Map

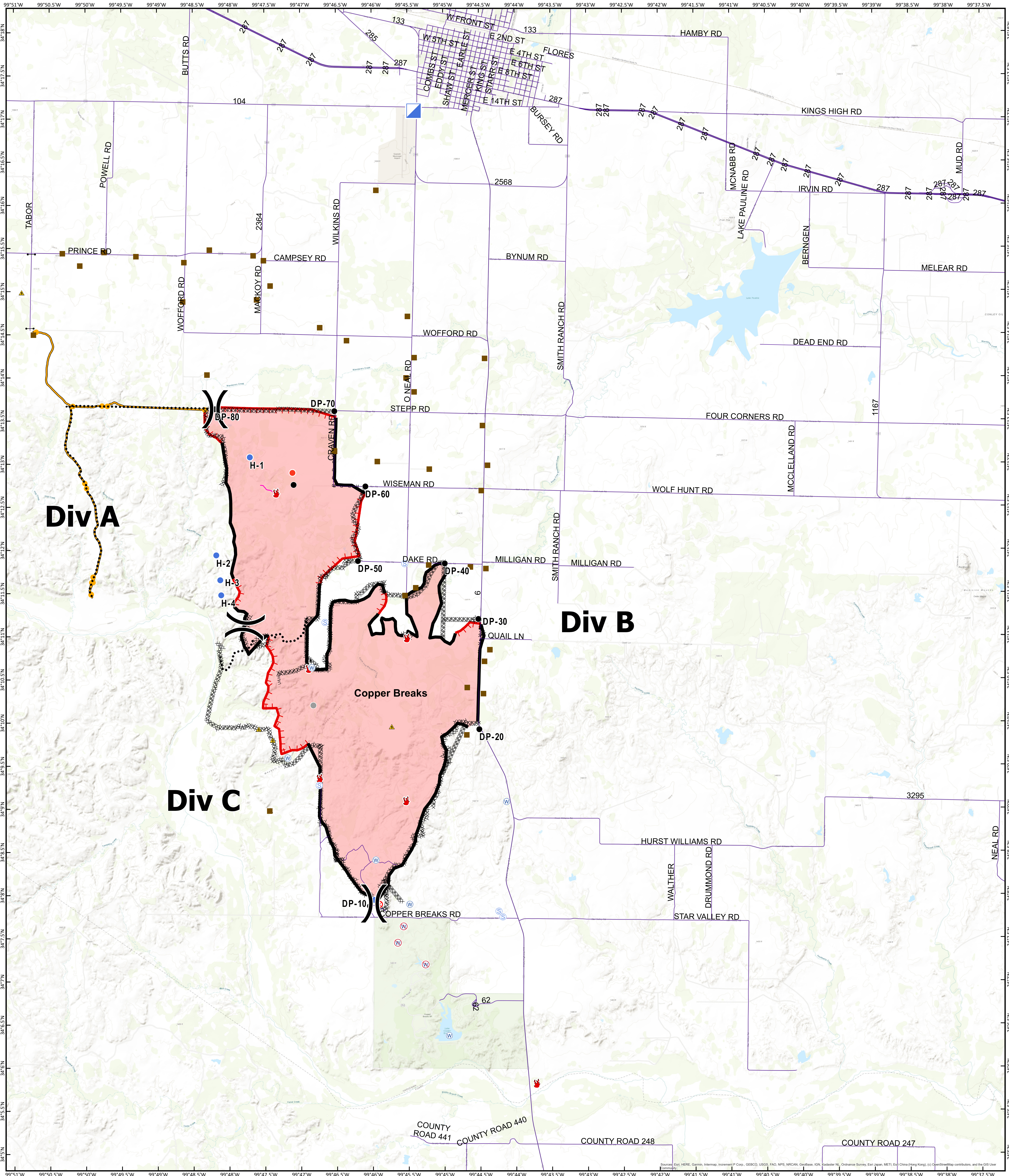
Copper Breaks

TX-TXS-190226

Approximate Acreage: 7,206



8/23/2019



- | | | | | | |
|----------------|----------------------|-----------------------|-------------------------|----------------------------|----------------------------------|
| Branch Break | Structure Protection | Helispot | Staging Area | Roadway | Fire Break Planned or Incomplete |
| Drop Point | Hot Spot | Incident Command Post | Water Source | Uncontrolled Fire Edge | Planned Secondary Line |
| Fire Location | Fire Origin | Safety Zone | Restricted Water Source | Completed Line | Management Action Point |
| Division Break | Gate | | Other | Completed Dozer Line | Other |
| | | | | R-R Road as Completed Line | Unknown |



Information shown is based on the best available data at the time of map production.
Perimeter from satellite interpretation and fixed wing flight.
Latest intel: 20190822 @ 1001

0 0.45 0.9 1.8 Miles

20190822 @ 2238
Map Datum: NAD83 Feet
Author: SA Red Team