



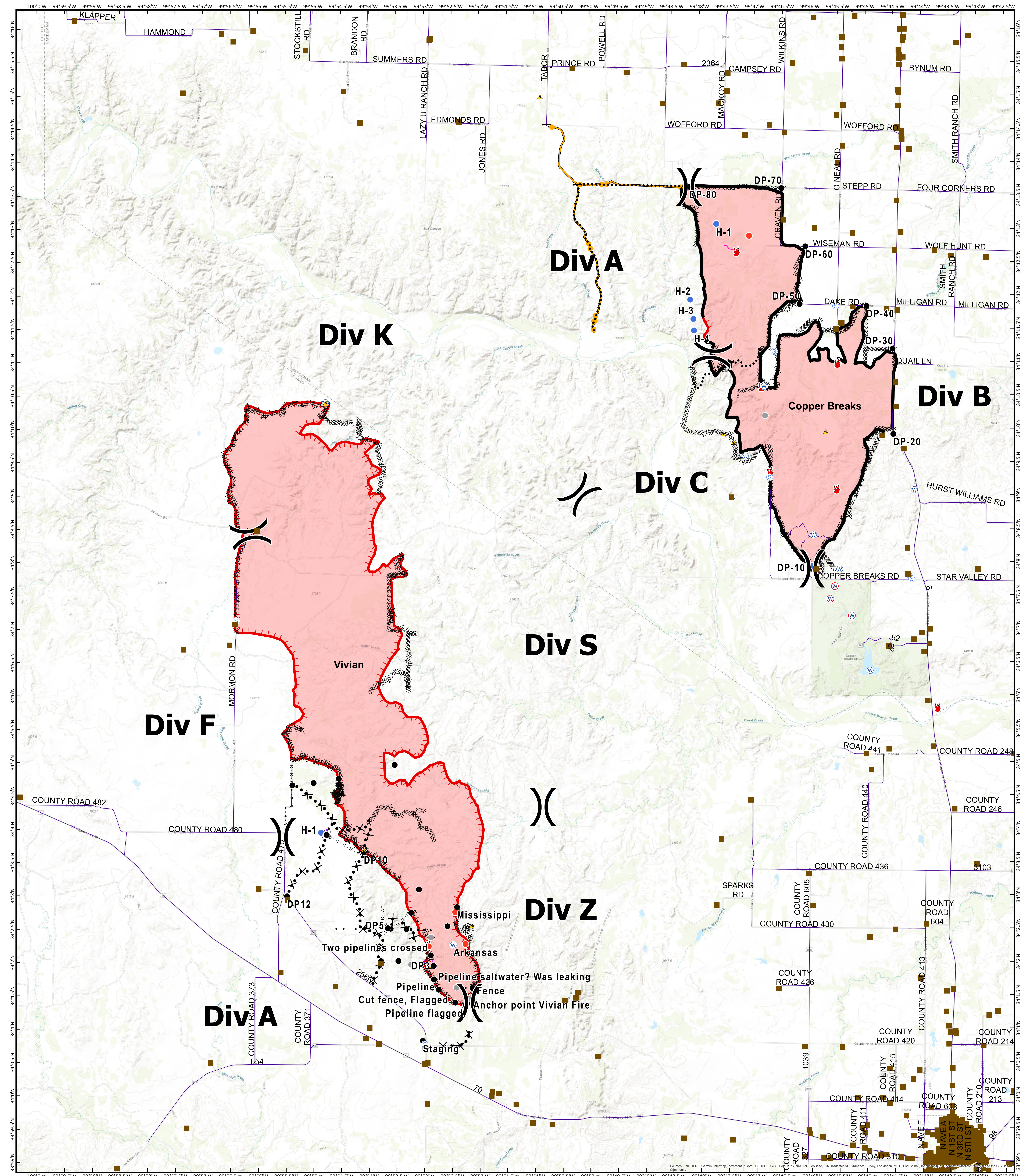
Vivian
TX-TXS-190262
Approximate Acres: 12,021

Briefing Map

Copper Breaks
TX-TXS-190226
Approximate Acres: 7,206



8/24/2019



- Branch Break
- Division Break

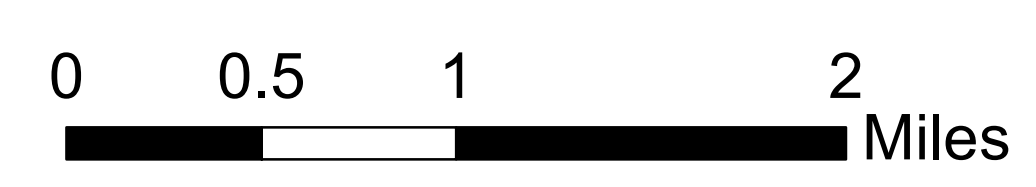
- Structure Protection
- Aerial Hazard
- Drop Point
- Fire Location
- Fire Origin
- Gate
- Helispot
- Hot Spot
- Safety Zone
- Staging Area
- Water Source
- Restricted Water Source
- Other
- Roadway
- Uncontrolled Fire Edge
- Completed Line
- Completed Dozer Line
- R - R - Road as Completed Line
- Proposed Dozer Line
- Fire Break Planned or Incomplete
- Planned Secondary Line
- Aerial Hazard
- Management Action Point
- Other
- Unknown



Information shown is based on the best available data at the time of map production.

Perimeter from satellite interpretation and fixed wing flight.

Latest intel: 20190823 @ 1950



20190823 @ 2149
Map Datum: NAD83 Feet
Author: SA Red Team